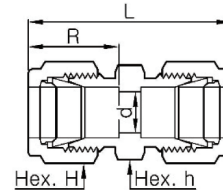


Unions

MU

Straight Union

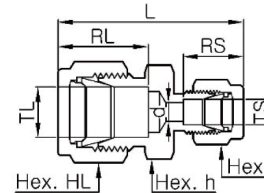


Part Number	Tube OD		Dimensions				
	inch	mm	d	R	L	h	H
MU- 1	1/16	1.59	1.3	8.6	25.1	5/16	5/16
MU- 2	1/8	3.18	2.3	12.7	35.6	7/16	7/16
MU- 3	3/16	4.76	3.0	13.7	37.3	7/16	1/2
MU- 4	1/4	6.35	4.8	15.2	40.9	1/2	9/16
MU- 5	5/16	7.94	6.4	16.3	42.9	9/16	5/8
MU- 6	3/8	9.53	7.1	16.8	45.0	5/8	11/16
MU- 8	1/2	12.70	10.4	22.9	51.3	13/16	7/8
MU-10	5/8	15.88	12.7	24.4	52.1	15/16	1
MU-12	3/4	19.05	15.7	24.4	53.6	1-1/16	1-1/8
MU-14	7/8	22.23	18.3	25.9	55.1	1-3/16	1-1/4
MU-16	1	25.40	22.4	31.2	64.8	1-3/8	1-1/2
MU-20	1-1/4	31.75	27.7	41.1	92.2	1-3/4	1-7/8
MU-24	1-1/2	38.10	34.0	50.0	108.0	2-1/8	2-1/4
MU-32	2	50.80	46.0	67.6	149.4	2-3/4	3

Part Number	Tube OD	Dimensions				
		d	R	L	h	H
MU - 2M	2	1.7	12.9	35.6	12	12
MU - 3M	3	2.4	12.9	35.3	12	12
MU - 4M	4	2.4	13.7	37.3	12	12
MU - 6M	6	4.8	15.3	41.0	14	14
MU - 8M	8	6.4	16.2	43.2	15	16
MU - 10M	10	7.9	17.2	46.2	18	19
MU - 12M	12	9.5	22.8	51.2	22	22
MU - 16M	16	12.7	24.4	52.0	24	25
MU - 18M	18	15.1	24.4	53.5	27	30
MU - 20M	20	15.9	26.0	55.0	30	32
MU - 22M	22	18.3	26.0	55.0	30	32
MU - 25M	25	21.8	31.3	65.0	35	38
MU - 28M	28	21.8	36.6	85.0	41	46
MU - 30M	30	26.2	39.6	92.7	46	50
MU - 32M	32	28.6	42.0	97.3	46	50
MU - 38M	38	33.7	49.4	114.0	55	60
MU - 50M	50	45.2	65.0	146.0	70	76

MUR

Reducing Union

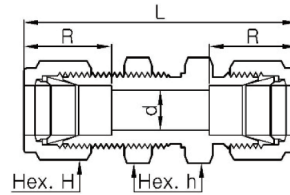


Part Number	Tube OD		Dimensions						
	TL	TS	d	RL	RS	L	h	HL	HS
MUR 2 - 1	1/8	1/16	1.3	12.7	8.6	31.0	7/16	7/16	5/16
MUR 3 - 1	3/16	1/16	1.3	13.7	8.6	32.3	7/16	1/2	5/16
MUR 3 - 2	3/16	1/8	2.3	13.7	12.7	36.6	7/16	1/2	7/16
MUR 4 - 1	1/4	1/16	1.3	15.2	8.6	34.3	1/2	9/16	5/16
MUR 4 - 2	1/4	1/8	2.3	15.2	12.7	38.6	1/2	9/16	7/16
MUR 4 - 3	1/4	3/16	3.0	15.2	13.7	39.4	1/2	9/16	1/2
MUR 5 - 2	5/16	1/8	2.3	16.3	12.7	39.6	9/16	5/8	7/16
MUR 5 - 4	5/16	1/4	4.8	16.3	15.2	42.2	9/16	5/8	9/16
MUR 6 - 1	3/8	1/16	1.3	16.8	8.6	36.6	5/8	11/16	5/16
MUR 6 - 2	3/8	1/8	2.3	16.8	12.7	40.9	5/8	11/16	7/16
MUR 6 - 4	3/8	1/4	4.8	16.8	15.2	43.2	5/8	11/16	9/16
MUR 6 - 5	3/8	5/16	6.4	16.8	16.3	44.2	5/8	11/16	5/8
MUR 8 - 2	1/2	1/8	2.3	22.9	12.7	45.2	13/16	7/8	7/16
MUR 8 - 4	1/2	1/4	4.8	22.9	15.2	47.0	13/16	7/8	9/16
MUR 8 - 6	1/2	3/8	7.1	22.9	16.8	48.5	13/16	7/8	11/16
MUR 10 - 6	5/8	3/8	6.4	24.4	16.8	49.3	15/16	1	11/16
MUR 10 - 8	5/8	1/2	10.4	24.4	22.9	52.1	15/16	1	7/8
MUR 12 - 4	3/4	1/4	4.8	24.4	15.2	49.3	1-1/16	1-1/8	9/16
MUR 12 - 6	3/4	3/8	7.1	24.4	16.8	50.8	1-1/16	1-1/8	11/16
MUR 12 - 8	3/4	1/2	10.4	24.4	22.9	53.6	1-1/16	1-1/8	7/8
MUR 12 - 10	3/4	5/8	12.7	24.4	24.4	53.6	1-1/16	1-1/8	1
MUR 16 - 8	1	1/2	10.4	31.2	22.9	60.5	1-3/8	1-1/2	7/8
MUR 16 - 12	1	3/4	15.7	31.2	24.4	60.5	1-3/8	1-1/2	1-1/8

Part Number	Tube OD		Dimensions						
	TL	TS	d	RL	RS	L	h	HL	HS
MUR 3M - 2M	3	2	1.7	12.9	12.9	35.3	12	12	12
MUR 6M - 2M	6	2	1.7	15.3	12.9	38.6	14	14	12
MUR 6M - 3M	6	3	2.4	15.3	12.9	38.6	14	14	12
MUR 6M - 4M	6	4	2.4	15.3	13.7	39.4	14	14	12
MUR 8M - 6M	8	6	4.8	16.2	15.3	42.3	15	16	14
MUR 10M - 4M	10	4	2.4	17.2	13.7	42.9	18	19	12
MUR 10M - 6M	10	6	4.8	17.2	15.3	44.5	18	19	14
MUR 10M - 8M	10	8	6.4	17.2	16.2	45.1	18	19	16
MUR 12M - 6M	12	6	4.8	22.8	15.3	47.0	18	22	14
MUR 12M - 8M	12	8	6.4	22.8	16.2	47.8	22	22	16
MUR 12M - 10M	12	10	7.9	22.8	17.2	48.7	22	22	19
MUR 15M - 12M	15	12	6.4	24.4	22.8	48.8	22	25	22
MUR 16M - 10M	16	10	7.9	24.4	17.2	49.5	24	25	19
MUR 16M - 12M	16	12	9.5	24.4	22.8	52.0	24	25	22
MUR 18M - 10M	18	10	7.9	24.4	17.2	51.0	27	30	19
MUR 18M - 12M	18	12	9.5	24.4	22.8	53.5	27	30	22
MUR 25M - 18M	25	18	15.1	31.3	24.4	61.0	35	38	30
MUR 25M - 20M	25	20	15.9	31.3	26.0	62.3	35	38	32
MUR 30M - 18M	30	18	15.1	39.6	24.4	75.4	46	50	30
MUR 30M - 20M	30	20	15.9	39.6	26.0	75.4	46	50	32
MUR 30M - 25M	30	25	21.8	39.6	31.3	80.1	46	50	38
MUR 32M - 18M	32	18	15.1	42.0	24.4	77.8	46	50	30
MUR 32M - 20M	32	20	15.9	42.0	26.0	77.8	46	50	32
MUR 32M - 25M	32	25	21.8	42.0	31.3	82.3	46	50	38
MUR 38M - 20M	38	20	15.9	49.4	26.0	87.5	55	60	32
MUR 38M - 25M	38	25	21.8	49.4	31.3	92.0	55	60	38
MUR 38M - 30M	38	30	26.2	49.4	39.6	105.0	55	60	50

MUB

Bulkhead Union

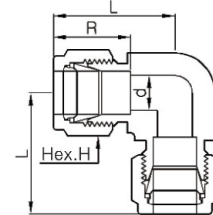
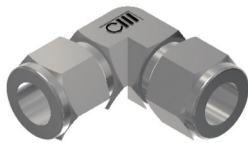


Part Number	Tube OD		Dimensions				
	inch	mm	d	R	L	h	H
MUB- 1	1/16	1.59	1.3	8.6	31.5	5/16	5/16
MUB- 2	1/8	3.18	2.3	12.7	51.3	1/2	7/16
MUB- 3	3/16	4.76	3.0	13.7	53.6	9/16	1/2
MUB- 4	1/4	6.35	4.8	15.2	57.7	5/8	9/16
MUB- 5	5/16	7.94	6.4	16.3	60.7	11/16	5/8
MUB- 6	3/8	9.53	7.1	16.8	62.2	3/4	11/16
MUB- 8	1/2	12.70	10.4	22.9	71.1	15/16	7/8
MUB- 10	5/8	15.88	12.7	24.4	72.6	1-1/16	1
MUB- 12	3/4	19.05	15.7	24.4	79.0	1-3/16	1-1/8
MUB- 14	7/8	22.23	18.3	25.9	84.6	1-3/8	1-1/4
MUB- 16	1	25.40	22.4	31.2	95.8	1-5/8	1-1/2
MUB- 20	1-1/4	31.75	27.7	41.1	123.2	1-7/8	1-7/8
MUB- 24	1-1/2	38.10	34.0	50.0	139.2	2-1/4	2-1/4
MUB- 32	2	50.80	46.0	67.6	180.3	2-3/4	3

Part Number	Tube OD	Dimensions				
		d	R	L	h	H
MUB- 3M	3	2.4	12.9	51.3	14	12
MUB- 4M	4	2.4	13.7	53.6	14	12
MUB- 6M	6	4.8	15.3	57.7	16	14
MUB- 8M	8	6.4	16.2	61.0	18	16
MUB- 10M	10	7.9	17.2	63.7	22	19
MUB- 12M	12	9.5	22.8	71.0	24	22
MUB- 16M	16	12.7	24.4	72.5	27	25
MUB- 18M	18	15.1	24.4	78.9	30	30
MUB- 20M	20	15.9	26.0	84.5	35	32
MUB- 22M	22	18.3	26.0	84.5	35	32
MUB- 25M	25	21.8	31.3	96.0	41	38
MUB- 30M	30	26.2	39.6	124.0	50	50
MUB- 32M	32	28.6	42.0	128.0	50	50
MUB- 38M	38	33.7	49.4	145.0	60	60

ML

Union Elbow

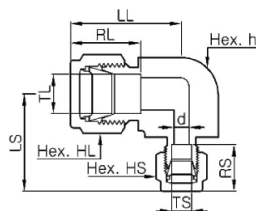
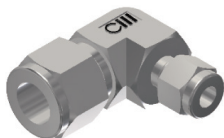


Part Number	Tube OD		Dimensions				
	inch	mm	d	R	L	h	H
ML- 1	1/16	1.59	1.3	8.6	17.8	3/8	5/16
ML- 2	1/8	3.18	2.3	12.7	22.4	3/8	7/16
ML- 3	3/16	4.76	3.0	13.7	25.4	1/2	1/2
ML- 4	1/4	6.35	4.8	15.2	26.9	1/2	9/16
ML- 5	5/16	7.94	6.4	16.3	28.7	9/16	5/8
ML- 6	3/8	9.53	7.1	16.8	30.5	5/8	11/16
ML- 8	1/2	12.70	10.4	22.9	36.1	13/16	7/8
ML- 10	5/8	15.88	12.7	24.4	38.1	15/16	1
ML- 12	3/4	19.05	15.7	24.4	39.9	1-1/16	1-1/8
ML- 14	7/8	22.23	18.3	25.9	44.7	1-3/8	1-1/4
ML- 16	1	25.40	22.4	31.2	49.0	1-3/8	1-1/2
ML- 20	1-1/4	31.75	27.7	41.1	67.8	1-11/16	1-7/8
ML- 24	1-1/2	38.10	34.0	50.0	78.7	2	2-1/4
ML- 32	2	50.80	46.0	67.6	107.2	2-3/4	3

Part Number	Tube OD	Dimensions				
		d	R	L	h	H
ML- 3M	3	2.4	12.9	22.3	3/8	12
ML- 4M	4	2.4	13.7	25.4	1/2	12
ML- 6M	6	4.8	15.3	27.0	1/2	14
ML- 8M	8	6.4	16.2	28.8	9/16	16
ML- 10M	10	7.9	17.2	31.5	11/16	19
ML- 12M	12	9.5	22.8	36.0	13/16	22
ML- 16M	16	12.7	24.4	38.0	15/16	25
ML- 18M	18	15.1	24.4	39.8	1-1/16	30
ML- 20M	20	15.9	26.0	44.6	1-3/8	32
ML- 22M	22	18.3	26.0	44.6	1-3/8	32
ML- 25M	25	21.8	31.3	49.1	1-3/8	38
ML- 28M	28	21.8	36.6	64.0	41	46
ML- 30M	30	26.2	39.6	69.9	46	50
ML- 32M	32	28.6	42.0	72.3	46	50
ML- 38M	38	33.7	49.4	84.0	55	60
ML- 50M	50	45.2	65.0	106.0	2-3/4	76

MLR

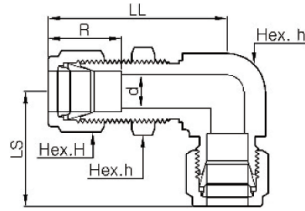
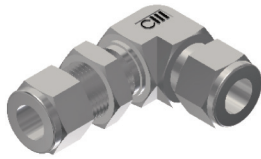
Reducing Union Elbow



Part Number	Tube OD		Dimensions							
	TL	TS	d	RL	RS	LL	LS	h	HL	HS
MLR 6 - 4	3/8	1/4	4.8	16.8	15.2	30.5	29.0	5/8	11/16	9/16
MLR 8 - 4	1/2	1/4	4.8	22.9	15.2	36.1	31.8	13/16	7/8	9/16
MLR12 - 8	3/4	1/2	10.4	24.4	22.9	39.9	36.1	11/16	1-1/8	7/8

MBL

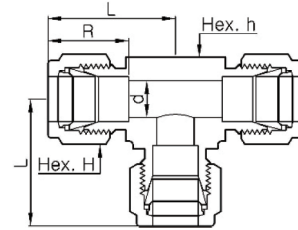
Bulkhead Union Elbow



To order this product, please contact Cheon-woo M-Lok headquarters.

MT

Union Tee

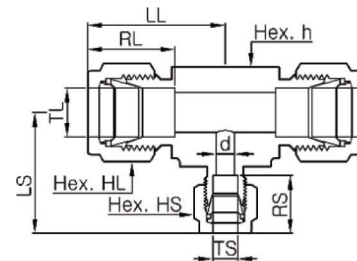


Part Number	Tube OD		Dimensions				
	inch	mm	d	R	L	h	H
MT - 1	1/16	1.59	1.3	8.6	17.8	3/8	5/16
MT - 2	1/8	3.18	2.3	12.7	22.4	3/8	7/16
MT - 3	3/16	4.76	3.0	13.7	24.4	7/16	1/2
MT - 4	1/4	6.35	4.8	15.2	26.9	1/2	9/16
MT - 5	5/16	7.94	6.4	16.3	29.7	5/8	5/8
MT - 6	3/8	9.53	7.1	16.8	30.5	5/8	11/16
MT - 8	1/2	12.70	10.4	22.9	36.1	13/16	7/8
MT - 10	5/8	15.88	12.7	24.4	38.9	1	1
MT - 12	3/4	19.05	15.7	24.4	39.9	1-1/16	1-1/8
MT - 14	7/8	22.23	18.3	25.9	44.7	1-3/8	1-1/4
MT - 16	1	25.40	22.4	31.2	49.0	1-3/8	1-1/2
MT - 20	1-1/4	31.75	27.7	41.1	67.8	1-11/16	1-7/8
MT - 24	1-1/2	38.10	34.0	50.0	78.7	2	2-1/4
MT - 32	2	50.80	46.0	67.6	107.2	2-3/4	3

Part Number	Tube OD	Dimensions				
		d	R	L	h	H
MT - 2M	2	1.7	12.9	22.3	3/8	12
MT - 3M	3	2.4	12.9	22.3	3/8	12
MT - 4M	4	2.4	13.7	25.4	1/2	12
MT - 6M	6	4.8	15.3	27.0	1/2	14
MT - 8M	8	6.4	16.2	29.9	5/8	16
MT - 10M	10	7.9	17.2	31.5	11/16	19
MT - 12M	12	9.5	22.8	36.0	13/16	22
MT - 16M	16	12.7	24.4	38.8	1	25
MT - 18M	18	15.1	24.4	39.8	1-1/16	30
MT - 20M	20	15.9	26.0	44.6	1-3/8	32
MT - 22M	22	18.3	26.0	44.6	1-3/8	32
MT - 25M	25	21.8	31.3	49.1	1-3/8	38
MT - 28M	28	21.8	36.6	64.0	41	46
MT - 30M	30	26.2	39.6	69.9	46	50
MT - 32M	32	28.6	42.0	72.3	46	50
MT - 38M	38	33.7	49.4	84.0	55	60
MT - 50M	50	45.2	65.0	106.0	2-3/4	76

MTR

Reducing Union Tee

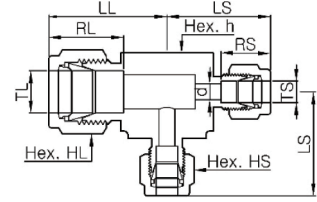
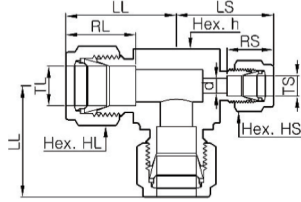


Part Number	Tube OD		Dimensions								
	TL	TS	d	RL	RS	LL	LS	h	HL	HS	
MTR 6 - 4	3/8	1/4	4.8	16.8	15.2	30.5	29.0	5/8	11/16	9/16	
MTR 8 - 4	1/2	1/4	4.8	22.9	15.2	36.1	31.8	13/16	7/8	9/16	
MTR 8 - 6	1/2	3/8	7.1	22.9	16.8	36.1	33.3	13/16	7/8	11/16	
MTR 10 - 6	5/8	3/8	7.1	24.4	16.8	38.9	36.1	1	15/16	11/16	
MTR 12 - 6	3/4	3/8	7.1	24.4	16.8	39.9	37.1	1-1/16	1-1/16	11/16	
MTR 12 - 8	3/4	1/2	10.4	24.4	22.9	39.9	39.9	1-1/16	1-1/16	7/8	
MTR 16 - 6	1	3/8	7.1	31.2	22.9	49.0	41.9	1-3/8	1-1/2	11/16	
MTR 16 - 8	1	1/2	10.4	31.2	22.9	49.0	44.7	1-3/8	1-1/2	7/8	
MTR 16 - 12	1	3/4	15.7	31.2	24.4	49.0	44.7	1-3/8	1-1/2	1-1/16	
MTR 20 - 16	1-1/4	1	22.4	31.2	24.4	67.8	55.1	1-11/16	1-7/8	1-1/2	
MTR 24 - 16	1-1/2	1	22.4	31.2	24.4	78.7	59.9	2	2-1/4	1-1/2	
MTR 32 - 16	2	1	22.4	31.2	24.4	107.2	70.9	2-3/4	3	1-1/2	

Part Number	Tube OD		Dimensions									
	TL	TS	d	RL	RS	LL	LS	h	HL	HS		
MTR 3M - 6M	3	6	2.4	12.9	15.3	24.7	26.9	1/2	12	14		
MTR 8M - 6M	8	6	4.8	16.2	15.3	30.0	29.0	5/8	16	14		
MTR 10M - 6M	10	6	4.8	17.2	15.3	31.5	29.7	11/16	19	14		
MTR 12M - 6M	12	6	4.8	22.8	15.3	36.0	31.8	13/16	22	14		
MTR 15M - 12M	15	12	9.5	24.4	22.8	38.9	38.9	1	25	22		
MTR 16M - 12M	16	12	9.5	24.4	22.8	38.8	38.9	1	25	22		
MTR 18M - 12M	18	12	9.5	24.4	22.8	39.9	39.9	1-1/16	30	22		
MTR 22M - 12M	22	12	9.5	26.0	22.8	44.7	44.7	1-3/8	32	22		
MTR 25M - 12M	25	12	9.5	31.3	22.8	49.0	44.7	1-3/8	38	22		

MTR

Reducing Union Tee

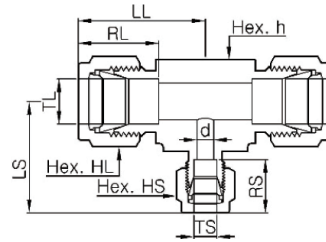


Part Number	Tube OD		Dimensions								
	TL	TS	d	RL	RS	LL	LS	h	HL	HS	
MTR 6-4-6	3/8	1/4	4.8	16.8	15.2	30.5	29.0	5/8	11/16	9/16	
MTR 8-4-8	1/2	1/4	4.8	22.9	15.2	36.1	31.8	13/16	7/8	9/16	
MTR12-8-12	3/4	1/2	10.4	24.4	22.9	39.9	36.1	1-1/16	1-1/8	7/8	

Part Number	Tube OD		Dimensions								
	TL	TS	d	RL	RS	LL	LS	h	HL	HS	
MTR 8-6-6	1/2	3/8	7.1	36.1	33.3	30.5	29.0	13/16	7/8	11/16	
MTR10-6-6	5/8	3/8	7.1	38.9	36.1	36.1	31.8	2	15/16	11/16	
MTR12-6-6	3/4	3/8	7.1	39.9	37.1	39.9	36.1	1-1/16	1-1/16	11/16	
MTR16-12-12	1	3/4	15.7	31.2	24.4	49.0	45.7	1-3/8	1-1/2	1-1/8	

MTR

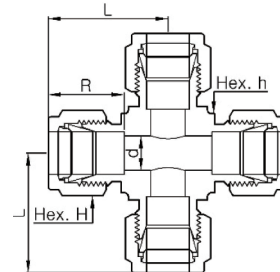
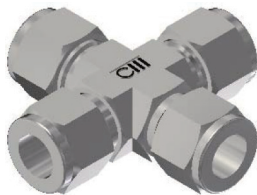
Reducing Union Tee



Part Number	Tube OD			Dimensions												
	TL	TS	TM	d	RL	RS	RM	LL	LS	LM	h	HL	HS	HM		
MTR 10 - 8 - 6	5/8	1/2	3/8	7.1	24.4	22.9	16.8	38.9	38.9	36.1	1	15/16	7/8	11/16		
MTR 12 - 8 - 6	5/8	3/8	3/8	7.1	24.4	22.9	16.8	39.9	39.9	37.1	1-1/16	1-1/16	7/8	11/16		
MTR 16 - 12 - 6	3/4	3/8	3/8	7.1	31.2	24.4	16.8	49.0	44.7	41.9	1-3/8	1-1/2	1-1/16	11/16		

MX

Union Cross



Part Number	Tube OD		Dimensions				
	inch	mm	d	R	L	h	H
MX - 2	1/8	1.59	2.3	12.7	22.4	3/8	7/16
MX - 4	1/4	3.18	4.8	15.2	26.9	1/2	9/16
MX - 5	5/16	4.76	6.4	16.3	29.7	5/8	5/8
MX - 6	3/8	6.35	7.1	16.8	30.5	5/8	11/16
MX - 8	1/2	7.94	10.4	22.9	36.1	13/16	7/8
MX - 10	5/8	9.53	12.7	24.4	38.9	1	1
MX - 12	3/4	12.70	15.7	24.4	39.9	1-1/16	1-1/8
MX - 16	1	15.88	22.4	31.2	49.0	1-3/8	1-1/2

Part Number	Tube OD	Dimensions				
		d	R	L	h	H
MX - 3M	3	2.4	12.9	22.4	3/8	12
MX - 6M	6	4.8	15.3	27.0	1/2	14
MX - 8M	8	6.4	16.2	29.9	9/16	16
MX - 10M	10	7.9	17.2	33.5	11/16	19
MX - 12M	12	9.5	22.8	36.0	13/16	22
MX - 16M	16	12.7	24.4	37.0	15/16	25
MX - 18M	18	15.1	24.4	38.3	1-1/16	30
MX - 20M	22	15.9	26.0	44.7	1-3/8	32
MX - 22M	25	18.3	26.0	44.7	1-3/8	32
MX - 25M	28	21.8	31.3	49.2	1-3/8	38