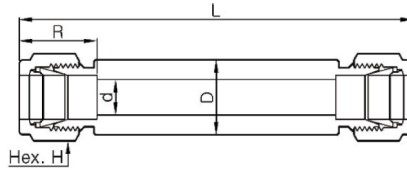


MBUW

Welding Union

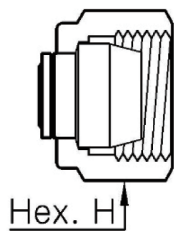


Part Number	Tube OD		Dimensions				
	inch	mm	d	R	L	D	H
MBUW - 4	1/4	6.4	4.8	15.2	86.0	14	9/16
MBUW - 6	3/8	9.5	7.1	16.8	88.6	19	11/16
MBUW - 8	1/2	12.7	10.4	22.9	93.7	23	7/8
MBUW - 10	5/8	15.9	12.7	24.4	93.7	25	1
MBUW - 12	3/4	19.1	15.7	24.4	93.7	28	1-1/8
MBUW - 16	1	25.4	22.4	31.2	102.8	35	1-1/2
MBUW - 20	1-1/4	31.8	27.7	41.1	127.7	50	1-7/8
MBUW - 24	1-1/2	38.1	34.0	50.0	140.4	55	2-1/4
MBUW - 32	2	50.8	46.0	67.6	175.5	80	3

Plug and Cap

MP

Plug



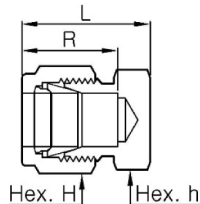
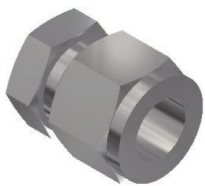
Part Number	Tube OD		Dimensions		Part Number	Tube OD	Dimensions	
	inch	mm	H				H	
MP - 1	1/16	1.6	5/16		MP - 2M	2	12	
MP - 2	1/8	3.2	7/16		MP - 3M	3	12	
MP - 3	3/16	4.8	1/2		MP - 4M	4	12	
MP - 4	1/4	6.4	9/16		MP - 6M	6	14	
MP - 5	5/16	7.9	5/8		MP - 8M	8	16	
MP - 6	3/8	9.5	11/16		MP - 10M	10	19	
MP - 8	1/2	12.7	7/8		MP - 12M	12	22	
MP - 10	5/8	15.9	1		MP - 14M	14	25	
MP - 12	3/4	19.1	1-1/8		MP - 16M	16	25	
MP - 14	3/4	22.2	1-1/4		MP - 18M	18	30	
MP - 16	1	25.4	1-1/2		MP - 20M	20	32	
MP - 20	1-1/4	25.4	1-7/8		MP - 22M	22	32	
MP - 24	1-1/2	25.4	2-1/4		MP - 25M	25	38	
MP - 32	2	25.4	3		MP - 28M	28	46	
					MP - 30M	30	46	
					MP - 32M	32	50	
					MP - 38M	38	60	

Installation Instruction

While holding fitting body steady, tighten the plug 1/4 turn from the finger-tight position. For 1/16", 1/8", and 3/16" (2, 3, and 4 mm) tube fittings, tighten the plug 1/8 turn.

MC

Cap



Part Number	Tube OD		Dimensions				Part Number	Tube OD	Dimensions			
	inch	mm	R	L	h	H			R	L	h	H
MC - 1	1/16	1.59	8.6	15.0	5/16	5/16	MC - 2M	2	12.9	20.1	12	12
MC - 2	1/8	3.18	12.7	20.1	7/16	7/16	MC - 3M	3	12.9	20.1	12	12
MC - 3	3/16	4.76	13.7	21.3	7/16	1/2	MC - 4M	4	13.7	21.3	12	12
MC - 4	1/4	6.35	15.2	23.4	1/2	9/16	MC - 6M	6	15.3	23.1	14	14
MC - 5	5/16	7.94	16.3	24.4	9/16	5/8	MC - 8M	8	16.2	24.5	15	16
MC - 6	3/8	9.53	16.8	25.7	5/8	11/16	MC - 10M	10	17.2	26.6	18	19
MC - 8	1/2	12.70	22.9	30.7	13/16	7/8	MC - 12M	12	22.8	30.6	22	22
MC - 10	5/8	15.88	24.4	31.5	15/16	1	MC - 16M	16	24.4	31.4	24	25
MC - 12	3/4	19.05	24.4	32.3	1-1/16	1-1/8	MC - 18M	18	24.4	32.2	27	30
MC - 14	7/8	22.23	25.9	34.8	1-3/16	1-1/4	MC - 20M	20	26.0	34.8	30	32
MC - 16	1	25.40	31.2	40.9	1-3/8	1-1/2	MC - 22M	22	26.0	34.8	30	32
MC - 20	1-1/4	31.75	41.1	53.3	1-3/4	1-7/8	MC - 25M	25	31.3	41.0	35	38
MC - 24	1-1/2	38.10	50.0	64.5	2-1/8	2-1/4	MC - 28M	28	36.6	48.5	41	46
MC - 32	2	50.80	67.6	86.6	2-3/4	3	MC - 30M	30	39.6	53.4	46	50
							MC - 32M	32	42.0	55.8	46	50
							MC - 38M	38	49.4	65.4	55	60