

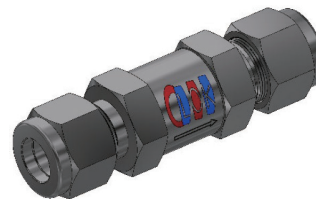
VCG SERIES GENERAL CHECK VALVE

Design Specification

Product Code	Working Pressure, psig (bar) @ 70°F (21°C)	
	SS316	Brass
VCG1, VCG2, VC3G, VCG4	3,000 (206)	3,000 (206)
VCG5, VCG6	2,000 (137)	1,500 (103)

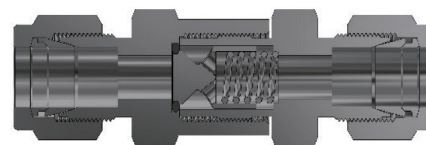
Temperature Range, °F (°C)

- FKM O-ring: -10 to 375 (-23 to 190) for SS316
- Buna N O-ring: -10 to 250 (-23 to 121) for Brass



Cracking and Reseal Pressure @ 70°F (21°C)

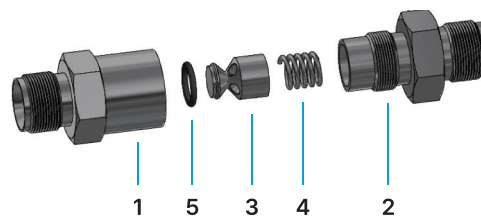
Nominal Cracking Pressure, psig(bar)	Cracking Pressure, psig (bar)	Reseal Pressure, psig (bar)
1/3 (0.03)	Up to 3 (0.21)	Up to 6 (0.42) Back pressure
1 (0.07)	Up to 4 (0.28)	Up to 6 (0.42) Back pressure
5 (0.34)	3 (0.2) to 9 (0.6)	Up to 2 (0.13) Back pressure
10 (0.69)	7 (0.5) to 15 (1.1)	3 (0.21) or more Inlet pressure
25 (1.8)	20 (1.4) to 30 (2.1)	17 (1.2) or more Inlet pressure
50 (3.4)	40 (2.8) to 60 (4.1)	35 (2.4) or more Inlet pressure
100 (6.9)	80 (5.5) to 120 (8.3)	70 (4.8) or more Inlet pressure



Material of Construction

No.	Description	Based on body material, ASTM Std.	
		SS316	Brass
1	Inlet Body*	A276 Type316	B16 Brass360
2	Outlet Body*	A276 Type316	B16 Brass360
3	Poppet*	A276 Type316	B16 Brass360
4	Spring*	Stainless Steel 302	Stainless Steel 302
5	O-Ring*	FKM	Buna N

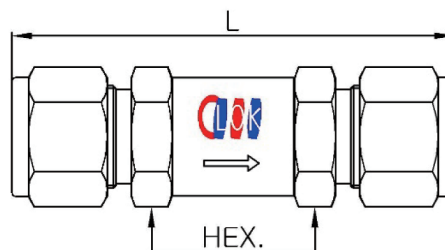
- Note:**
- Wetted part is marked with "*" in the description list.
 - The threads of outlet body are coated with molybdenum.
 - O-ring are coated with silicone based lubricant.



Product Code & Dimensions

Product Code	End Connections	End Connections	Orifice	Cv	Dimension		
					L	HEX.	
VCG1	ML2T	M- LOK 1/8"	4.8	0.1	55.0	5/8"	
	ML4T	M- LOK 1/4"	4.8	0.4	60.0	5/8"	
	ML6M	M- LOK 6mm	4.8	0.4	60.0	5/8"	
	M4N	Male NPT 1/4"	4.8	0.1	47.0	5/8"	
	F4N	Female NPT 1/4"	4.8	0.4	55.5	3/4"	
VCG2	ML6T	M- LOK 3/8"	7.1	1.5	74.8	7/8"	
	ML10M	M- LOK 10mm	7.1	1.5	74.8	7/8"	
	M6N	Male NPT 3/8"	7.1	1.5	64.6	7/8"	
VCG3	ML8T	M- LOK 1/2"	10.0	1.7	80.2	7/8"	
	ML12M	M- LOK 12mm	10.0	1.7	80.2	7/8"	
	M8N	Male NPT 1/2"	10.0	1.7	74.4	7/8"	
	F6N	Female NPT 3/8"	10.0	1.7	63.8	7/8"	
VCG4	ML10T	M- LOK 5/8"	13.5	2.5	91.8	1-1/8"	
	F8N	Female NPT 1/2"	13.5	2.5	84.7	1-1/8"	
VCG5	ML12T	M- LOK 3/4"	16.0	5.0	110.7	1-1/4"	
	M12N	Male NPT 3/4"	16.0	5.0	105.3	1-1/4"	
VCG6	F12N	Female NPT 3/4"	16.0	5.0	103.0	1-1/4"	
	ML16T	M- LOK 1"	18.0	6.5	121.2	1-3/8"	
	M16N	Male NPT 1"	18.0	6.5	116.2	1-3/8"	
		F16N	Female NPT 1"	18.0	6.5	111.4	1-5/8"

- Note:**
- All dimensions are in millimeters and may be changed for reference only.
 - In the case of M-LOK tube fittings, these are dimensions in a finger
 - End connections and sizes not listed in the table above can be made to order



Ordering Information

VCG3	ML8T	1/3	V	SS
Body Size	End Connection	Cracking Pressure	O-ring	Body Material
			V: FKM N: Buna N	SS: SS316 B: Brass