

# VCP SERIES ONE-PIECE CHECK VALVE

## Design Specification

Product Code	Working Pressure, psig (bar) @ 70°F (21°C)	
	SS316	Brass
VCP	3,000 (206)	3,000 (206)

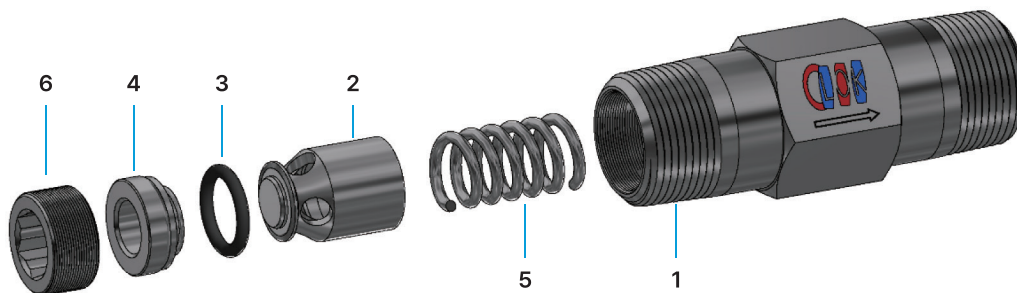
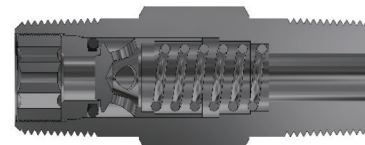
**Temperature Range, °F (°C)**

- FKM O-ring: -10 to 375 (-23 to 190) f or SS316
- Buna N O-ring: -10 to 250 (-23 to 121) for Brass



## Cracking and Reseal Pressure @ 70°F (21°C)

Nominal Cracking Pressure, psig (bar)	Cracking Pressure, psig (bar)	Reseal Pressure, psig (bar)
1/3 (0.03)	Upto 3 (0.21)	Upto 20(1.4) Back pressure
1 (0.07)	Upto 4 (0.28)	Upto 20(1.4) Back pressure
10 (0.69)	7 (0.5)to 13 (0.9)	Upto 10 (0.69) Back pressure
25 (1.8)	21 (1.5) to 29(2.0)	5 (0.35) or more Inlet pressure

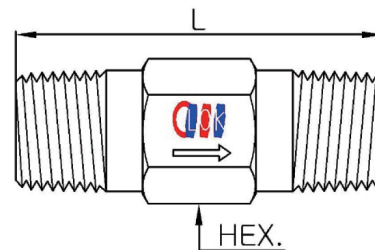


## Material of Construction

No.	Description	Based on body material, ASTM Std.	
		SS316	Brass
1	Body*	A276Type316	B16 Brass360
2	Poppet*	A276Type316	B16 Brass360
3	O-ring*	FKM	Buna N
4	Insert*	A276Type316	B16 Brass360
5	Spring*	Stainless Steel 302	Stainless Steel 302
6	LockingScrew*	A276Type316	A276Type316

**Note:**

- Wetted part is marked with "\*" in the description list.
- The threads of outlet body are coated with molybdenum.
- O-ring are coated with silicone based lubricant.



## Product Code & Dimensions

Product Code	End Connections	End Connections	Orifice	Cv	Dimension	
					L	HEX.
VCP1	M4N	Male NPT 1/4"	4.8	0.3	41.1	9/16"
	F4N	Female NPT 1/4"	4.8	0.3	62.1	3/4"
	MF4N	Male/Female 1/4"	4.8	0.3	44.4	3/4"
VCP2	M8N	Male NPT 1/2"	10.0	1.2	57.9	7/8"
	F8N	Female NPT 1/2"	10.0	1.2	94.2	1 1/16"
	MF8N	Male/Female 1/2"	10.0	1.2	71.9	1 1/16"

Note: • All dimensions are in millimeters and may be changed for reference only.

## Ordering Information

