

# VCA SERIES ADJUSTABLE ONE-PIECE CHECK VALVE

## Design Specification

Product Code	Working Pressure, psig (bar) @ 70°F (21°C)	
	SS316	Brass
VCA	3,000 (206)	3,000 (206)

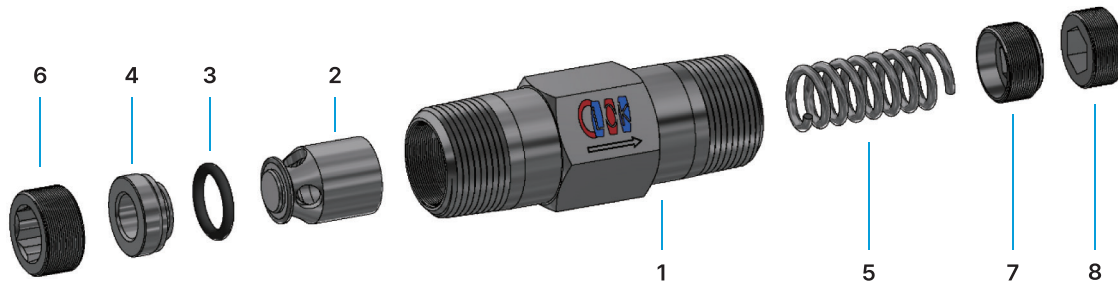
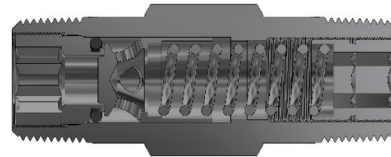
### Temperature Range, °F (°C)

- FKM O-ring: -10 to 375 (-23 to 190) for SS316
- Buna N O-ring: -10 to 250 (-23 to 121) for Brass



## Cracking and Reseal Pressure @ 70°F (21°C)

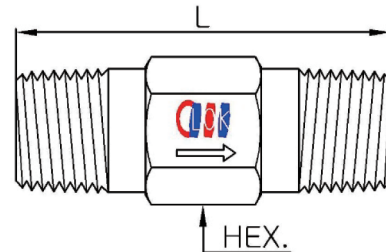
Designator	Cracking Pressure Range, psig (bar)
3	3 to 50 (0.2 to 3.4)
50	50 to 150 (3.4 to 10.3)
150	150 to 350 (10.3 to 24.1)
350	350 to 600 (24.1 to 41.3)



## Material of Construction

No.	Description	Based on body material, ASTM Std.	
		SS316	Brass
1	Body*	A276 Type316	B16 Brass360
2	Poppet*	A276 Type316	B16 Brass360
3	O-ring*	FKM	BunaN
4	Insert*	A276 Type316	B16 Brass360
5	Spring*	Stainless Steel 302	Stainless Steel 302
6	Insert Locking Screw*	A276 Type316	A276 Type316
7	Adjusting Screw*	A276 Type316	A276 Type316
8	Locking Screw*	A276 Type316	A276 Type316

- Note:**
- Wetted part is marked with "\*" in the description list.
  - The threads of outlet body are coated with molybdenum.
  - O-ring are coated with silicone based lubricant.



## Product Code & Dimensions

Product Code	End Connections	End Connections	Orifice	Cv	Dimension	
					L	HEX.
VCA1	M4N	Male NPT 1/4"	4.8	0.3	41.1	9/16"
	F4N	Female NPT 1/4"	4.8	0.3	75.7	3/4"
VCA2	M8N	Male NPT 1/2"	10.0	1.2	65.0	7/8"
	M8R	Female PT 1/2"	10.0	1.2	65.0	7/8"

- Note:**
- All dimensions are in millimeters and may be changed for reference only.
  - In the case of M-LOK tube fittings, these are dimensions in a finger-tight.
  - End connections and sizes not listed in the table above can be made to order.

## Ordering Information

VCG3	ML8T	1/3	V	SS
Body Size	End Connection	Cracking Pressure Designator	O-ring	Body Material
			V: FKM N: Buna N	SS: SS316 B: Brass