

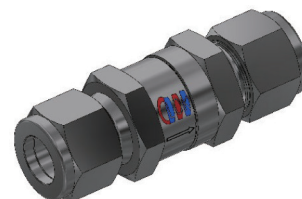
# VHC SERIES HIGH PRESSURE CHECK VALVE

## Design Specification

Product Code	Working Pressure, psig (bar) @ 70°F (21°C)	
	SS316	
VHC1, VHC2	6,000 (413)	
VHC3	5,000 (344)	

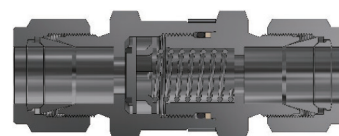
### Temperature Range, °F (°C)

- FKM O-ring: -10 to 375 (-23 to 190) for SS316



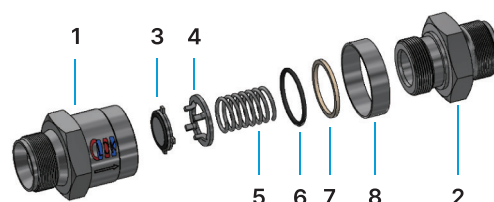
## Cracking and Reseal Pressure @ 70°F (21°C)

Nominal Cracking Pressure, psig (bar)	Cracking Pressure, psig (bar)	Reseal Pressure, psig (bar)
1/3 (0.03)	Upto 3 (0.21)	Upto 6 (0.42) Back pressure
1 (0.07)	Upto 4 (0.28)	Upto 6 (0.42) Back pressure
5 (0.34)	3 (0.2) to 9 (0.6)	Upto 2 (0.13) Back pressure
10 (0.69)	7 (0.5) to 15 (1.1)	3 (0.21) or more Inlet pressure
25 (1.8)	20 (1.4) to 30 (2.1)	17 (1.2) or more Inlet pressure



## Material of Construction

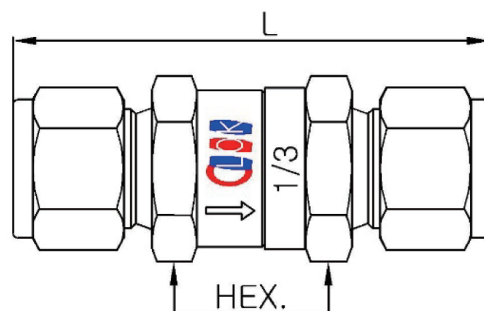
No.	Description	Based on body material, ASTM Std.
		SS316
1	Inlet Body*	A276 Type316
2	Outlet Body*	A276 Type316
3	Poppet*	A276 Type316 with bonded FKM
4	Poppet Stopper*	A276 Type316
5	Spring*	Stainless Steel 302
6	O-Ring*	FKM
7	Back-up Ring	PTFE
8	Identity Ring	Stainless Steel (optional)



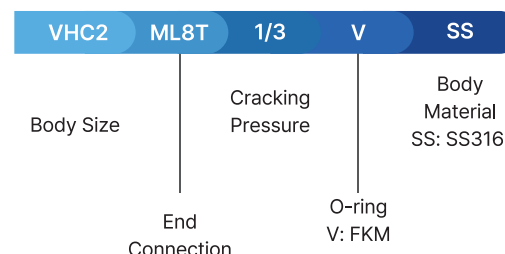
- Note:**
- Wetted part is marked with "\*" in the description list.
  - The threads of outlet body are coated with molybdenum.

## Product Code & Dimensions

Product Code	End Connections	End Connections	Orifice	Cv	Dimension	
					L	HEX.
VHC1	ML2T	M-LOK 1/8"	4.8	0.67	57.7	11/16"
	ML4T	M-LOK 1/4"	4.8	0.67	61.7	11/16"
	ML6M	M-LOK 6mm	4.8	0.67	61.7	11/16"
	M2N	Male NPT 1/8"	4.8	0.67	45.5	11/16"
	M4N	Male NPT 1/4"	4.8	0.67	55.1	11/16"
VHC2	F4N	Female NPT 1/4"	4.8	0.67	54.1	11/16"
	ML6T	M-LOK 3/8"	7.1	1.5	69.9	1"
	ML8T	M-LOK 1/2"	7.1	1.5	75.2	1"
	ML8M	M-LOK 8mm	7.1	1.5	68.6	1"
	ML10M	M-LOK 10mm	7.1	1.5	71.1	1"
	ML12M	M-LOK 12mm	7.1	1.5	75.2	1"
	M6N	Male NPT 3/8"	7.1	1.5	59.9	1"
	M8N	Male NPT 1/2"	7.1	1.5	69.3	1"
VHC3	F6N	Female NPT 3/8"	7.1	1.5	64.8	1"
	F8N	Female NPT 1/2"	7.1	1.5	77.0	1 1/16"
	ML12T	M-LOK 1/2"	15.0	1.7	89.4	1 5/8"
	ML16T	M-LOK 1"	15.0	1.7	98.6	1 5/8"
	ML22M	M-LOK 22mm	15.0	1.7	88.4	1 5/8"
	ML25M	M-LOK 25mm	15.0	1.7	98.6	1 5/8"
	M12N	Male NPT 3/4"	15.0	1.7	83.6	1 5/8"
	M16N	Male NPT 1"	15.0	1.7	93.2	1 5/8"
	F12N	Female NPT 3/4"	15.0	1.7	82.0	1 5/8"
	F16N	Female NPT 1"	15.0	1.7	97.3	1 5/8"



## Ordering Information



- Note:**
- All dimensions are in millimeters and may be changed for reference only.
  - In the case of M-LOK tube fittings, these are dimensions in a finger-tight.
  - End connections and sizes not listed in the table above can be made to order.