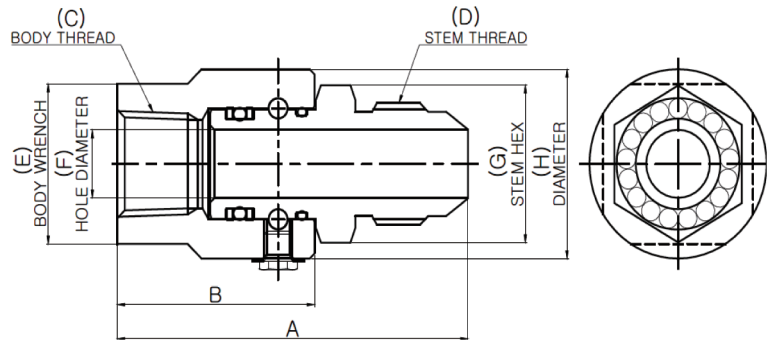


# Product Dimensions

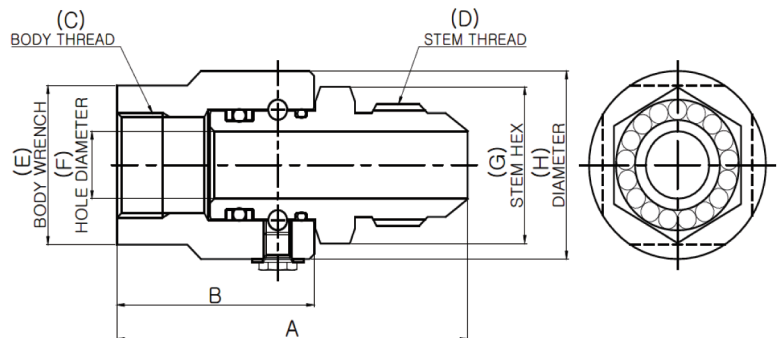
## JIC

**Male JIC (37°)  
x  
Female Pipe (NPTF)**



PART NUMBER	A	B	C	D	E	F	G	H	MAX. PSI G
CwM 4 MJ 6 x FP 25	67.8	43.7	1/4-18 NPTF	9/16-18 UN	22.2	6.4	19.1	25.2	5,000
CwM 8 MJ 8 x FP 38	67.4	39.5	3/8-18 NPTF	3/4-16 UN	28.6	10.3	25.4	32.8	5,000
CwM 8 MJ 8 x FP 50	69.6	41.9	1/2-14 NPTF	3/4-16 UN	31.8	10.3	25.4	37.6	5,000
CwM 8 MJ 10 x FP 50	72.1	41.9	1/2-14 NPTF	7/8-14 UN	31.8	12.3	25.4	37.6	5,000
CwM 12 MJ 12 x FP 75	81.5	47.0	3/4-14 NPTF	1 1/16-12 UN	38.1	15.5	34.9	42.6	4,500
CwM 16 MJ 16 x FP 100	94.0	63.0	1-11.5 NPTF	1 5/16-12 UN	44.5	21.4	41.3	48.7	4,000
CwM 20 MJ 20 x FP 125	107.4	68.2	1 1/4-11.5 NPTF	1 5/8-12 UN	54.0	27.4	44.5	59.9	4,000
CwM 24 MJ 24 x FP 150	119.8	74.9	1 1/2-11.5 NPTF	1 7/8-12 UN	60.2	33.3	54.0	64.7	4,000

**Male JIC (37°)  
x  
Female JIC (37°)**



PART NUMBER	A	B	C	D	E	F	G	H	MAX. PSI G
CwM 4 MJ 4 x FJ 4	65.5	41.9	7/16-20 UN	7/16-20 UN	25.4	4.4	19.1	HEX	5,000
CwM 4 MJ 5 x FJ 5	65.5	41.9	1/2-20 UN	1/2-20 UN	25.4	5.9	19.1	HEX	5,000
CwM 4 MJ 6 x FJ 6	70.4	46.2	9/16-18 UN	9/16-18 UN	25.4	6.4	19.1	HEX	5,000
CwM 8 MJ 8 x FJ 8	77.1	49.5	3/4-16 UN	3/4-16 UN	34.9	10.3	25.4	37.6	5,000
CwM 8 MJ 10 x FJ 10	82.2	52.1	7/8-14 UN	7/8-14 UN	34.9	12.3	25.4	37.6	5,000
CwM 12 MJ 12 x FJ 12	89.0	54.5	1 1/16-12 UN	1 1/16-12 UN	41.3	15.5	34.9	42.6	4,500
CwM 16 MJ 16 x FJ 16	103.9	67.2	1 5/16-12 UN	1 5/16-12 UN	44.5	21.4	41.3	48.7	4,000
CwM 20 MJ 20 x FJ 20	111.6	72.4	1 5/8-12 UN	1 5/8-12 UN	54.0	27.4	44.5	59.9	4,000
CwM 24 MJ 24 x FJ 24	131.5	86.6	1 7/8-12 UN	1 7/8-12 UN	60.3	33.3	54.0	64.8	4,000