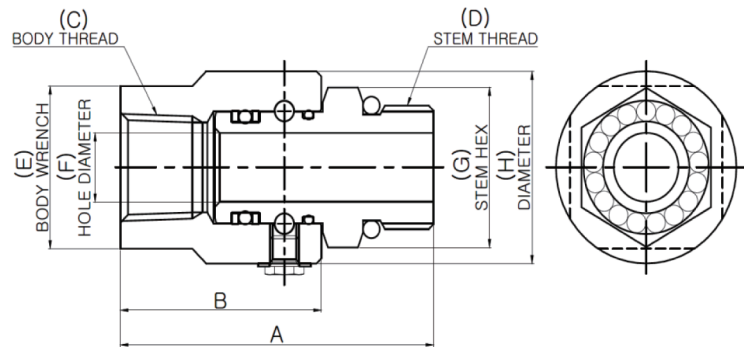


Product Dimensions

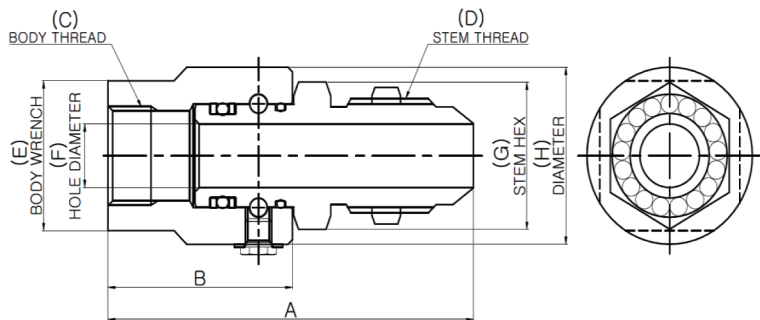
OJIC

**Male O-Ring (ORB)
x
Female Pipe (NPTF)**



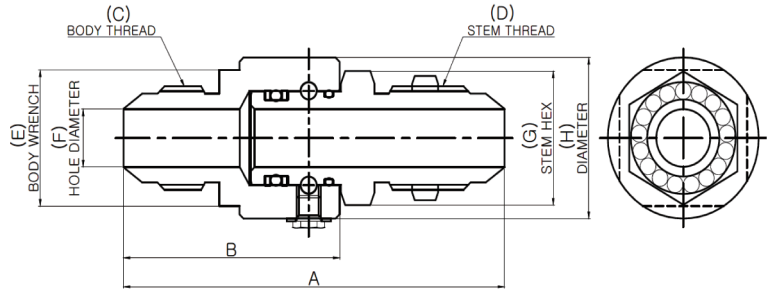
PART NUMBER	A	B	C	D	E	F	G	H	MAX. PSI G
CwM 4 MO 6 x FP 25	64.5	43.7	1/4-18 NPTF	9/16-18 UN	22.2	6.4	19.1	25.2	5,000
CwM 8 MO 8 x FP 38	63.8	39.5	3/8-18 NPTF	3/4-16 UN	28.6	10.3	25.4	32.8	5,000
CwM 8 MO 8 x FP 50	65.8	41.9	1/2-14 NPTF	3/4-16 UN	31.8	10.3	25.4	37.6	5,000
CwM 8 MO 10 x FP 50	68.8	41.9	1/2-14 NPTF	7/8-14 UN	31.8	12.3	25.4	37.6	5,000
CwM 12 MO 12 x FP 75	78.1	47.0	3/4-14 NPTF	1 1/16-12 UN	38.1	15.5	34.9	42.6	4,500
CwM 16 MO 16 x FP 100	92.1	57.2	1-11.5 NPTF	1 5/16-12 UN	44.5	21.4	41.3	48.7	4,000
CwM 20 MO 20 x FP 125	105.4	68.2	1 1/4-11.5 NPTF	1 5/8-12 UN	54.0	27.4	47.6	59.9	4,000
CwM 24 MO 24 x FP 150	115.6	74.9	1 1/2-11.5 NPTF	1 7/8-12 UN	60.2	33.3	54.0	64.7	4,000

**Male JIC Bulkhead (37°)
x
Female JIC (37°)**



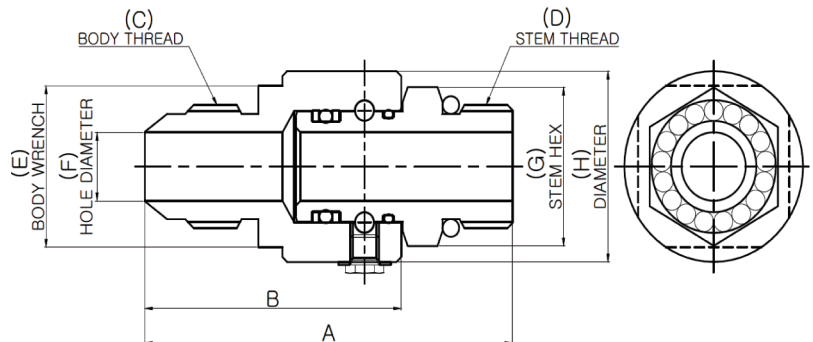
PART NUMBER	A	B	C	D	E	F	G	H	MAX. PSI G
CwM 4 MJB 6 x FJ 6	86.6	46.2	9/16-18 UN	9/16-18 UN	25.4	6.4	20.6	27.9	5,000
CwM 8 MJB 8 x FJ 8	95.8	49.5	3/4-16 UN	3/4-16 UN	34.9	10.3	25.4	37.6	5,000
CwM 8 MJB 10 x FJ 10	103.9	52.1	7/8-14 UN	7/8-14 UN	34.9	12.3	28.6	37.6	5,000
CwM 12 MJB 12 x FJ 12	112.4	54.5	1 1/16-12 UN	1 1/16-12 UN	41.3	15.5	34.9	42.6	4,500
CwM 16 MJB 16 x FJ 16	125.1	67.2	1 5/16-12 UN	1 5/16-12 UN	44.5	21.4	41.3	48.7	4,000
CwM 20 MJB 20 x FJ 20	134.4	72.4	1 5/8-12 UN	1 5/8-12 UN	54.0	27.4	47.6	59.9	4,000

Male JIC Bulkhead (37°)
x
Male JIC (37°)



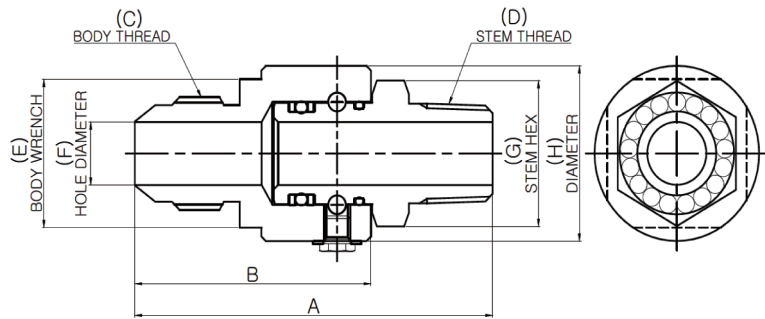
PART NUMBER	A	B	C	D	E	F	G	H	MAX. PSI G
CwM 4 MJB 6 x MJ 6	84.1	43.7	9/16-18 UN	9/16-18 UN	25.4	6.4	20.6	27.9	5,000
CwM 8 MJB 8 x MJ 8	94.5	48.3	3/4-16 UN	3/4-16 UN	34.9	10.3	25.4	37.6	5,000
CwM 8 MJB 10 x MJ 10	103.9	52.1	7/8-14 UN	7/8-14 UN	34.9	12.3	28.6	37.6	5,000
CwM 12 MJB 12 x MJ 12	111.9	54.0	1 1/16-12 UN	1 1/16-12 UN	39.6	15.5	34.9	42.6	4,500
CwM 16 MJB 16 x MJ 16	125.1	67.3	1 5/16-12 UN	1 5/16-12 UN	46.0	21.0	41.3	48.7	4,000
CwM 20 MJB 20 x MJ 20	134.4	72.4	1 5/8-12 UN	1 5/8-12 UN	55.6	27.4	47.6	59.9	4,000

Male O-Ring (ORB)
x
Male JIC (37°)



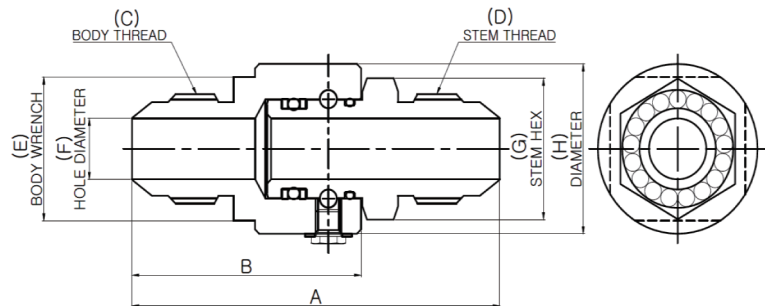
PART NUMBER	A	B	C	D	E	F	G	H	MAX. PSI G
CwM 4 MO 4 x MJ 4	64.5	43.7	7/16-20 UN	9/16-18 UN	22.2	4.4	15.9	HEX	5,000
CwM 4 MO 6 x MJ 6	64.5	43.7	9/16-18 UN	9/16-18 UN	22.2	6.4	19.1	HEX	5,000
CwM 8 MO 8 x MJ 8	72.1	48.3	3/4-16 UN	3/4-16 UN	28.6	10.3	25.4	37.6	5,000
CwM 8 MO 10 x MJ 8	75.2	48.3	3/4-16 UN	3/4-16 UN	31.8	10.3	25.4	37.6	5,000
CwM 8 MO 10 x MJ 10	79.0	52.1	7/8-14 UN	7/8-14 UN	31.8	12.3	25.4	37.9	5,000
CwM 12 MO 12 x MJ 12	85.1	54.0	1 1/16-12 UN	1 1/16-12 UN	38.1	15.5	34.9	42.6	4,500
CwM 16 MO 16 x MJ 16	102.2	67.3	1 5/16-12 UN	1 5/16-12 UN	44.5	21.0	41.3	48.7	4,000
CwM 20 MO 20 x MJ 20	109.6	72.4	1 5/8-12 UN	1 5/8-12 UN	54.0	27.4	47.6	59.9	4,000
CwM 24 MO 24 x MJ 24	128.0	87.5	1 7/8-12 UN	1 7/8-12 UN	60.2	33.3	53.9	64.7	4,000

**Male Pipe (NPTF)
x
Male JIC (37°)**



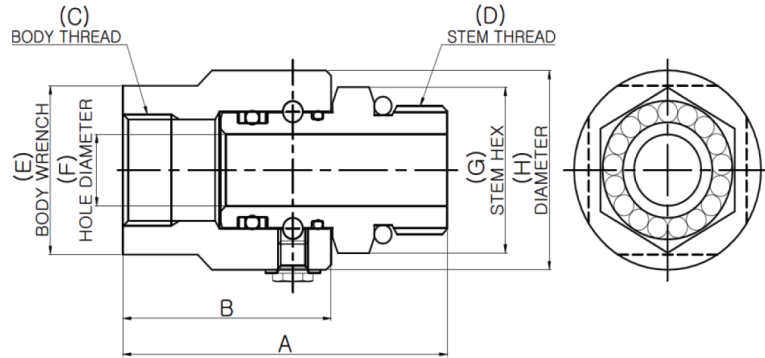
PART NUMBER	A	B	C	D	E	F	G	H	MAX. PSI G
CwM 4 MP 25 x MJ 4	62.2	43.7	7/16-20 UN	1/4-18 NPTF	25.4	4.6	15.9	HEX	5,000
CwM 4 MP 25 x MJ 6	68.5	43.7	9/16-18 UN	1/4-18 NPTF	25.4	6.4	15.9	HEX	5,000
CwM 4 MP 38 x MJ 6	68.6	43.7	9/16-18 UN	3/8-18 NPTF	25.4	6.4	19.1	HEX	5,000
CwM 8 MP 38 x MJ 8	76.5	48.3	3/4-16 UN	3/8-18 NPTF	34.9	10.3	25.4	37.6	5,000
CwM 8 MP 38 x MJ 10	80.3	52.1	7/8-14 UN	3/8-18 NPTF	34.9	10.3	25.4	37.6	5,000
CwM 8 MP 50 x MJ 8	78.5	48.3	3/4-16 UN	1/2-14 NPTF	34.9	10.3	25.4	37.6	5,000
CwM 8 MP 50 x MJ 10	82.0	52.1	7/8-14 UN	1/2-14 NPTF	34.9	12.3	25.4	37.6	5,000
CwM 12 MP 75 x MJ 12	85.3	54.0	1 1/16-12 UN	3/4-14 NPTF	39.6	15.5	28.6	42.6	4,500
CwM 16 MP 100 x MJ 16	103.5	67.3	1 5/16-12 UN	1-11.5 NPTF	46.0	21.0	34.9	48.7	4,000
CwM 20 MP 125 x MJ 20	110.6	72.4	1 5/8-12 UN	1 1/4-11.5 NPTF	55.6	27.4	44.5	59.9	4,000
CwM 24 MP 150 x MJ 24	130.0	87.5	1 7/8-12 UN	1 1/2-11.5 NPTF	60.3	33.3	50.8	65.0	4,000

**Male JIC (37°)
x
Male JIC (37°)**



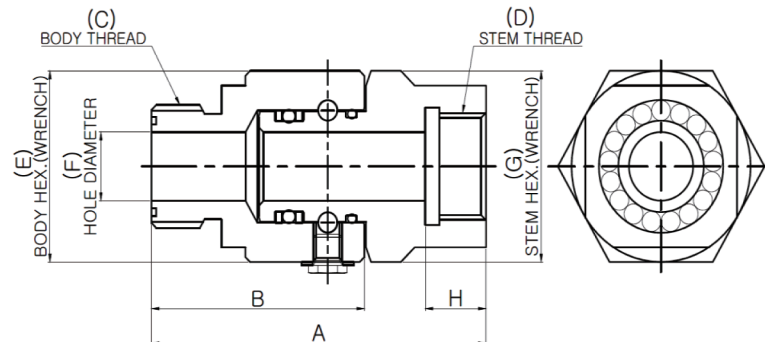
PART NUMBER	A	B	C	D	E	F	G	H	MAX. PSI G
CwM 4 MJ 4 x MJ 4	67.3	43.7	7/16-20 UN	7/16-20 UN	25.4	4.4	19.1	HEX	5,000
CwM 4 MJ 6 x MJ 6	67.8	43.7	9/16-18 UN	9/16-18 UN	25.4	6.4	19.1	HEX	5,000
CwM 8 MJ 8 x MJ 8	75.8	48.3	3/4-16 UN	3/4-16 UN	34.9	10.3	25.4	37.6	5,000
CwM 8 MJ 10 x MJ 10	82.2	52.1	7/8-14 UN	7/8-14 UN	34.9	12.3	25.4	37.6	5,000
CwM 12 MJ 12 x MJ 12	88.5	54.0	1 1/16-12 UN	1 1/16-12 UN	39.6	15.5	34.9	42.6	4,500
CwM 16 MJ 16 x MJ 16	104.0	67.3	1 5/16-12 UN	1 5/16-12 UN	46.0	21.0	41.3	48.7	4,000
CwM 20 MJ 20 x MJ 20	111.6	72.4	1 5/8-12 UN	1 5/8-12 UN	55.6	27.4	44.5	59.9	4,000
CwM 24 MJ 24 x MJ 24	132.3	87.5	1 7/8-12 UN	1 7/8-12 UN	60.3	33.3	54.0	65.0	4,000

**Male O-Ring (ORB)
x
Female JIC (37°)**



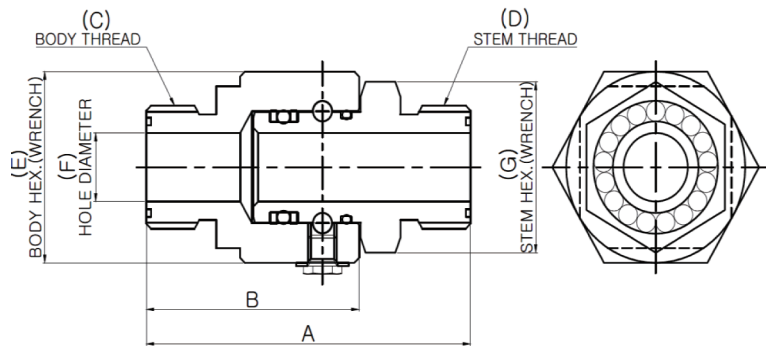
PART NUMBER	A	B	C	D	E	F	G	H	MAX. PSI G
CwM 4 MO 6 x FJ 6	67.1	46.2	9/16-18 UN	9/16-18 UN	25.4	6.4	19.1	HEX	5,000
CwM 8 MO 8 x FJ 8	73.4	49.5	3/4-16 UN	3/4-16 UN	34.9	10.3	25.4	37.6	5,000
CwM 8 MO 10 x FJ 10	79.0	52.1	7/8-14 UN	7/8-14 UN	34.9	12.3	25.4	37.6	5,000
CwM 12 MO 12 x FJ 12	85.6	54.5	1 1/16-12 UN	1 1/16-12 UN	41.3	15.5	34.9	42.6	4,500
CwM 16 MO 16 x FJ 16	102.1	67.2	1 5/16-12 UN	1 5/16-12 UN	44.5	21.0	41.3	48.7	4,000
CwM 20 MO 20 x FJ 20	109.6	72.4	1 5/8-12 UN	1 5/8-12 UN	54.0	27.4	47.6	59.9	4,000
CwM 24 MO 24 x FJ 24	127.1	86.6	1 7/8-12 UN	1 7/8-12 UN	60.3	33.3	54.0	64.8	4,000

**Female Face Seal (FFS)
x
Male Face Seal (MFS)**



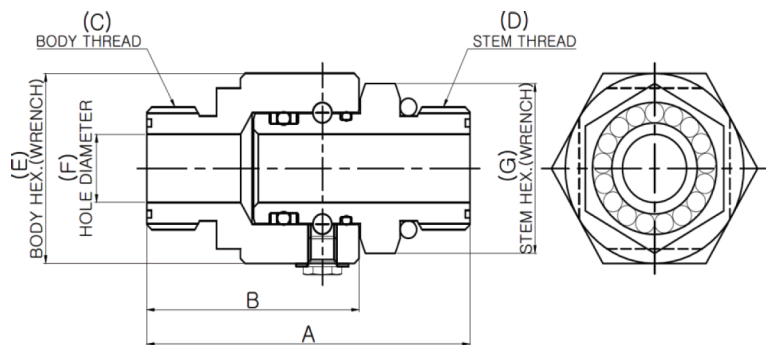
PART NUMBER	A	B	C	D	E	F	G	H	MAX. PSI G
CwM 4 FFS 6 x MFS 6	55.9	41.7	11/16-16 UN	11/16-16 UN	25.4	6.4	22.2	9.5	5,000
CwM 8 FFS 8 x MFS 8	61.0	43.4	13/16-16 UN	13/16-16 UN	34.9	9.9	31.8	11.0	5,000
CwM 8 FFS 10 x MFS 10	64.8	46.1	1-14 UN	1-14 UN	34.9	12.3	31.8	12.8	5,000
CwM 12 FFS 12 x MFS 12	68.3	48.3	1 3/16-12 UN	1 3/16-12 UN	39.6	15.5	38.1	14.5	4,500
CwM 16 FFS 16 x MFS 16	81.5	59.9	1 7/16-12 UN	1 7/16-12 UN	46.0	20.6	44.5	14.8	4,000
CwM 20 FFS 20 x MFS 20	86.1	63.5	1 11/16-12 UN	1 11/16-12 UN	55.6	26.0	54.0	14.8	4,000
CwM 24 FFS 24 x MFS 24	100.3	77.5	2-12 UN	2-12 UN	60.3	32.0	60.3	14.8	4,000

**Male Face Seal (MFS)
x
Male Face Seal (MFS)**



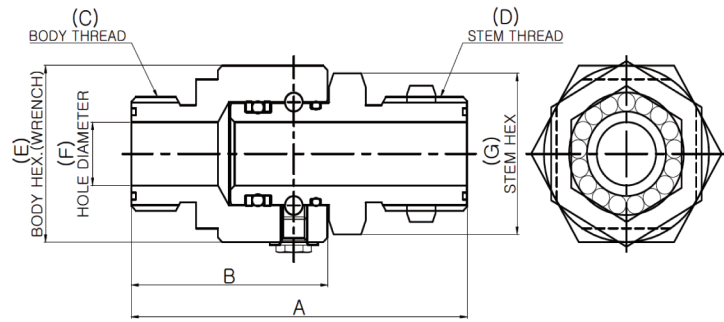
PART NUMBER	A	B	C	D	E	F	G	MAX. PSI G
CwM 4 MFS 6 x MFS 6	62.5	41.7	11/16-16 UN	11/16-16 UN	25.4	6.4	19.1	5,000
CwM 8 MFS 8 x MFS 8	67.2	43.4	13/16-16 UN	13/16-16 UN	34.9	9.9	25.4	5,000
CwM 8 MFS 10 x MFS 10	73.0	46.1	1-14 UN	1-14 UN	34.9	12.3	28.6	5,000
CwM 12 MFS 12 x MFS 12	79.4	48.3	1 3/16-12 UN	1 3/16-12 UN	39.6	15.5	31.8	4,500
CwM 16 MFS 16 x MFS 16	94.8	59.9	1 7/16-12 UN	1 7/16-12 UN	46.0	20.6	38.1	4,000
CwM 20 MFS 20 x MFS 20	100.7	63.5	1 11/16-12 UN	1 11/16-12 UN	55.6	26.0	44.5	4,000
CwM 24 MFS 24 x MFS 24	118.0	77.5	2-12 UN	2-12 UN	60.3	33.3	54.0	4,000

**Male O-Ring (ORB)
x
Male Face Seal (MFS)**



PART NUMBER	A	B	C	D	E	F	G	MAX. PSI G
CwM 4 MO 6 x MFS 6	62.5	41.7	11/16-16 UN	9/16-18 UN	25.4	6.4	19.1	5,000
CwM 8 MO 8 x MFS 8	67.2	43.4	13/16-16 UN	3/4-16 UN	34.9	9.9	25.4	5,000
CwM 8 MO 10 x MFS 10	73.0	46.1	1-14 UN	7/8-14 UN	34.9	12.3	25.4	5,000
CwM 12 MO 12 x MFS 12	79.4	48.3	1 3/16-12 UN	1 1/16-12 UN	39.6	15.5	34.9	4,500
CwM 16 MO 16 x MFS 16	94.8	59.9	1 7/16-12 UN	1 5/16-12 UN	46.0	20.6	41.3	4,000
CwM 20 MO 20 x MFS 20	100.7	63.5	1 11/16-12 UN	1 5/8-12 UN	55.6	26.0	47.6	4,000
CwM 24 MO 24 x MFS 24	118.0	77.5	2-12 UN	1 7/8-12 UN	60.3	33.3	54.0	4,000

Male Face Seal Bulkhead(MFS)
x
Male Face Seal (MFS)



PART NUMBER	A	B	C	D	E	F	G	MAX. PSI G
CwM 4 MFSB 6 x MFS 6	84.3	41.7	11/16-16 UN	11/16-16 UN	25.4	6.4	25.4	5,000
CwM 8 MFSB 8 x MFS 8	89.6	43.4	13/16-16 UN	13/16-16 UN	34.9	9.9	28.6	5,000
CwM 8 MFSB 10 x MFS 10	98.9	46.1	1-14 UN	1-14 UN	34.9	12.3	28.6	5,000
CwM 12 MFSB 12 x MFS 12	101.1	48.3	1 3/16-12 UN	1 3/16-12 UN	39.6	15.5	38.1	4,500
CwM 16 MFSB 16 x MFS 16	113.0	59.9	1 7/16-12 UN	1 7/16-12 UN	46.0	20.6	44.5	4,000
CwM 20 MFSB 20 x MFS 20	117.9	63.5	1 11/16-12 UN	1 11/16-12 UN	55.6	26.0	50.8	4,000