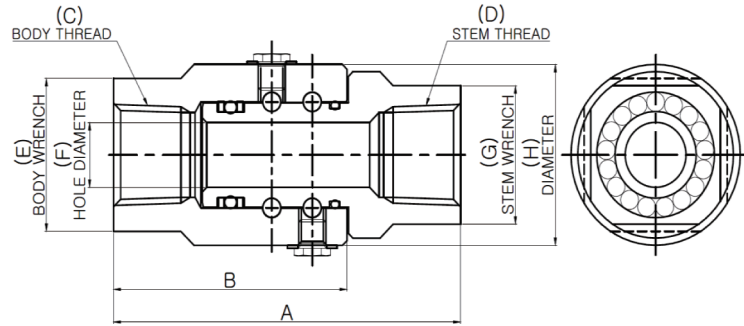


Product Dimensions

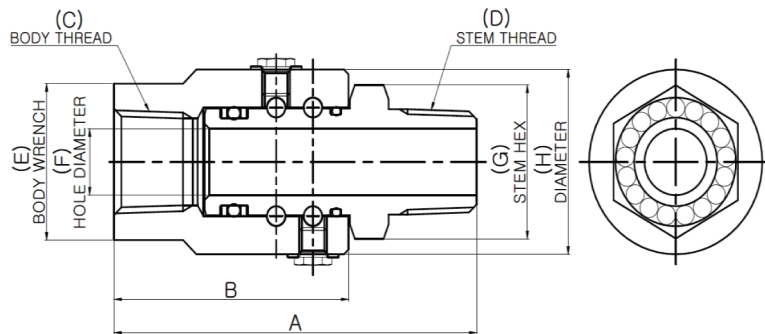
10000PIPE

**10,000 PSI Female Pipe (NPTF)
x
Female Pipe (NPTF)**



PART NUMBER	A	B	C	D	E	F	G	H	MAX. PSI G
CwM 8 HP FP 38 x FP 38	63.5	46.5	3/8-18 NPTF	3/8-18 NPTF	28.6	11.1	28.6	37.6	10,000
CwM 8 HP FP 50 x FP 50	74.6	53.0	1/2-14 NPTF	1/2-14 NPTF	31.8	11.1	28.6	37.6	10,000

**Male Pipe (NPTF)
x
Female Pipe (NPTF)**



PART NUMBER	A	B	C	D	E	F	G	H	MAX. PSI G
CwM 8 HP MP 38 x FP 38	74.4	46.5	3/8-18 NPTF	3/8-18 NPTF	28.6	7.9	25.4	37.6	10,000
CwM 8 HP MP 50 x FP 50	78.0	53.0	1/2-14 NPTF	1/2-14 NPTF	28.6	11.1	25.4	37.6	10,000