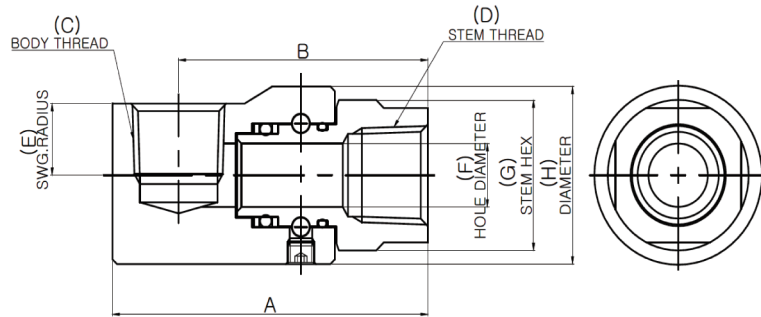


Product Dimensions

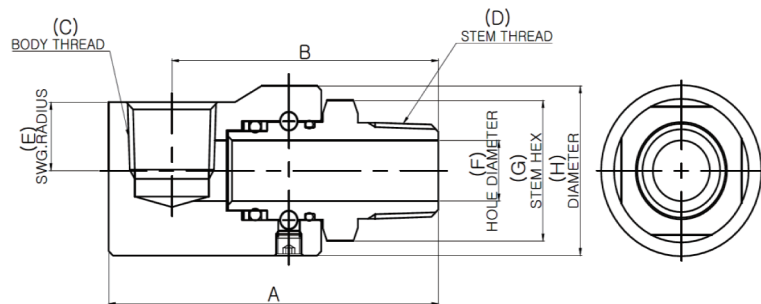
9-PIPE

**Female Pipe (NPTF)
x
Female Pipe (NPTF)**



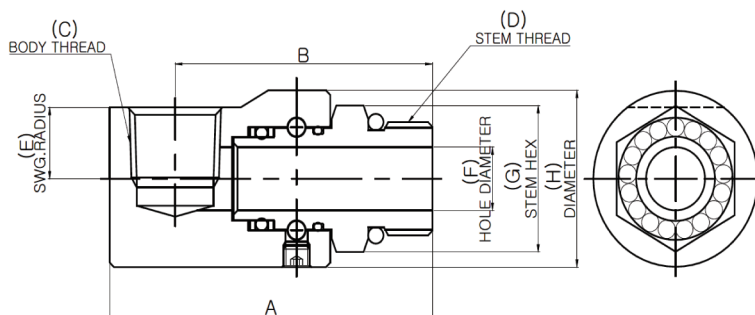
PART NUMBER	A	B	C	D	E	F	G	H	MAX. PSI G
CwM 9-2 FP 12.5 x FP 12.5	45.3	38.7	1/8-27 NPTF	1/8-27 NPTF	9.5	4.0	15.9	22.3	5,000
CwM 9-4 FP 25 x FP 25	56.9	47.6	1/4-18 NPTF	1/4-18 NPTF	13.3	6.4	19.1	30.3	5,000
CwM 9-8 FP 38 x FP 38	64.5	52.3	3/8-18 NPTF	3/8-18 NPTF	14.9	13.5	22.2	38.0	5,000
CwM 9-8 FP 50 x FP 50	71.6	57.8	1/2-14 NPTF	1/2-14 NPTF	14.9	13.5	28.6	38.0	5,000
CwM 9-12 FP 75 x FP 75	77.0	60.1	3/4-14 NPTF	3/4-14 NPTF	16.8	15.5	34.9	43.4	4,500
CwM 9-16 FP 100 x FP 100	101.6	81.0	1-11.5 NPTF	1-11.5 NPTF	20.9	21.0	41.3	54.9	4,000
CwM 9-20 FP 125 x FP 125	110.9	86.2	1 1/4-11.5 NPTF	1 1/4-11.5 NPTF	26.6	30.0	50.8	68.6	4,000
CwM 9-24 FP 150 x FP 150	142.4	111.1	1 1/2-11.5 NPTF	1 1/2-11.5 NPTF	27.3	33.3	60.3	74.1	4,000
CwM 9-32 FP 200 x FP 200	163.1	128.3	2-11.5 NPTF	2-11.5 NPTF	35.2	45.2	73.0	93.1	3,000

**Male Pipe (NPTF)
x
Female Pipe (NPTF)**



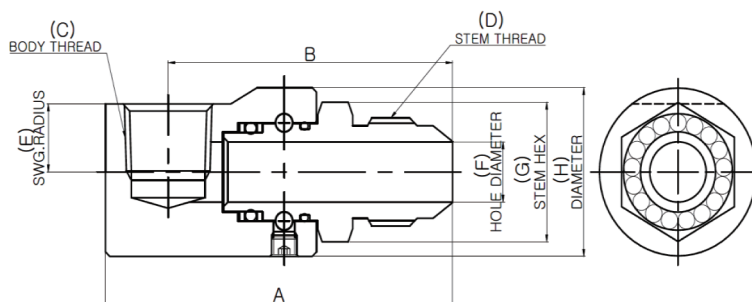
PART NUMBER	A	B	C	D	E	F	G	H	MAX. PSI G
CwM 9-2 MP 12.5 x FP 12.5	47.1	40.5	1/8-27 NPTF	1/8-27 NPTF	9.5	4.0	11.1	22.3	5,000
CwM 9-4 MP 25 x FP 25	60.2	50.8	1/4-18 NPTF	1/4-18 NPTF	13.3	6.4	15.9	30.3	5,000
CwM 9-4 MP 38 x FP 25	62.2	52.8	1/4-18 NPTF	3/8-18 NPTF	13.3	6.4	19.1	30.3	5,000
CwM 9-7 MP 38 x FP 38	78.4	64.2	3/8-18 NPTF	3/8-18 NPTF	14.4	10.3	19.1	34.5	5,000
CwM 9-8 MP 38 x FP 38	75.2	63.0	3/8-18 NPTF	3/8-18 NPTF	14.9	10.3	25.4	38.0	5,000
CwM 9-8 MP 50 x FP 50	80.5	66.8	1/2-14 NPTF	1/2-14 NPTF	14.9	13.5	25.4	38.0	5,000
CwM 9-12 MP 75 x FP 75	87.1	70.1	3/4-14 NPTF	3/4-14 NPTF	16.3	15.5	28.6	43.4	4,500
CwM 9-16 MP 100 x FP 100	113.7	93.1	1-11.5 NPTF	1-11.5 NPTF	20.9	21.0	34.9	54.9	4,000
CwM 9-20 MP 125 x FP 125	123.8	99.2	1 1/4-11.5 NPTF	1 1/4-11.5 NPTF	26.6	30.0	44.5	68.6	4,000
CwM 9-24 MP 150 x FP 150	157.1	125.9	1 1/2-11.5 NPTF	1 1/2-11.5 NPTF	27.3	33.3	54.0	74.1	4,000
CwM 9-32 MP 200 x FP 200	180.5	146.4	2-11.5 NPTF	2-11.5 NPTF	35.2	45.2	63.5	93.1	3,000

**Male O-Ring (ORB)
x
Female Pipe (NPTF)**



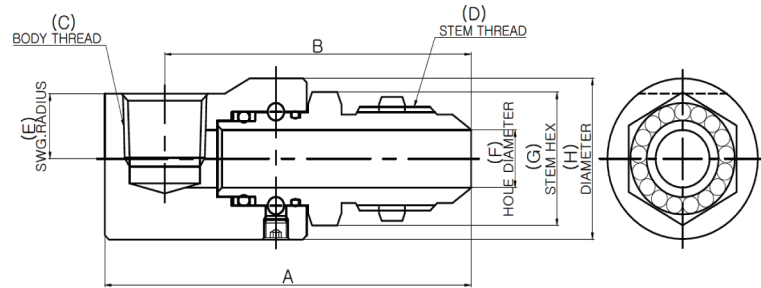
PART NUMBER	A	B	C	D	E	F	G	H	MAX. PSI G
CwM 9-4 MO 4 x FP 25	62.5	53.1	1/4-18 NPTF	7/16-20 UN	13.3	4.4	15.9	30.3	5,000
CwM 9-4 MO 6 x FP 25	62.5	53.1	1/4-18 NPTF	9/16-18 UN	13.3	6.4	19.1	30.3	5,000
CwM 9-8 MO 8 x FP 38	70.9	58.7	3/8-18 NPTF	3/4-16 UN	14.9	9.9	25.4	38.0	5,000
CwM 9-8 MO 10 x FP 38	73.9	61.7	3/8-18 NPTF	7/8-14 UN	14.9	12.3	25.4	38.0	5,000
CwM 9-8 MO 8 x FP 50	74.2	60.4	1/2-14 NPTF	3/4-16 UN	14.9	9.9	25.4	38.0	5,000
CwM 9-8 MO 10 x FP 50	77.3	63.5	1/2-14 NPTF	7/8-14 UN	14.9	12.3	25.4	38.0	5,000
CwM 9-12 MO 12 x FP 75	86.8	70.0	3/4-14 NPTF	1 1/16-12 UN	16.3	15.5	34.9	43.4	4,500
CwM 9-16 MO 16 x FP 100	112.4	91.9	1-11.5 NPTF	1 5/16-12 UN	21.0	21.0	41.3	54.9	4,000
CwM 9-20 MO 20 x FP 125	122.8	98.2	1 1/4-11.5 NPTF	1 5/8-12 UN	26.6	27.4	47.6	68.6	4,000
CwM 9-24 MO 24 x FP 150	155.1	123.8	1 1/2-11.5 NPTF	1 7/8-12 UN	27.3	33.3	54.0	74.1	4,000

**Male JIC (37°)
x
Female Pipe (NPTF)**



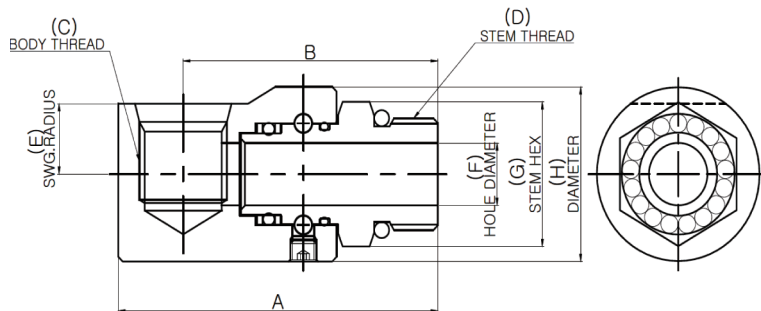
PART NUMBER	A	B	C	D	E	F	G	H	MAX. PSI G
CwM 9-4 MJ 4 x FP 25	65.3	55.1	1/4-18 NPTF	7/16-20 UN	13.3	4.4	15.9	30.3	5,000
CwM 9-4 MJ 6 x FP 25	65.8	56.4	1/4-18 NPTF	9/16-18 UN	13.3	6.4	19.1	30.3	5,000
CwM 9-8 MJ 8 x FP 38	74.7	62.5	3/8-18 NPTF	3/4-16 UN	16.5	9.9	25.4	38.0	5,000
CwM 9-8 MJ 10 x FP 38	77.2	65.0	3/8-18 NPTF	7/8-14 UN	16.5	12.3	25.4	38.0	5,000
CwM 9-8 MJ 8 x FP 50	78.0	64.1	1/2-14 NPTF	3/4-16 UN	14.8	9.9	25.4	38.0	5,000
CwM 9-8 MJ 10 x FP 50	80.5	66.6	1/2-14 NPTF	7/8-14 UN	14.8	12.3	25.4	38.0	5,000
CwM 9-12 MJ 12 x FP 75	90.3	73.4	3/4-14 NPTF	1 1/16-12 UN	16.3	15.5	34.9	43.4	4,500
CwM 9-16 MJ 16 x FP 100	114.2	93.7	1-11.5 NPTF	1 5/16-12 UN	18.8	21.0	41.3	54.9	4,000
CwM 9-20 MJ 20 x FP 125	124.8	100.2	1 1/4-11.5 NPTF	1 5/8-12 UN	26.6	27.4	47.6	68.6	4,000
CwM 9-24 MJ 24 x FP 150	159.4	128.1	1 1/2-11.5 NPTF	1 7/8-12 UN	27.2	33.3	54.0	74.1	4,000

**Male JIC Bulkhead (37°)
x
Female Pipe (NPTF)**



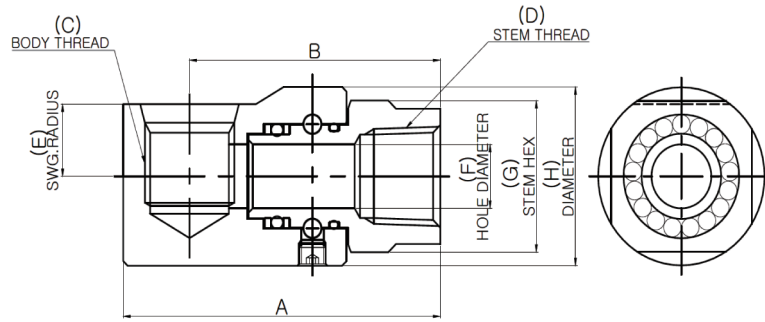
PART NUMBER	A	B	C	D	E	F	G	H	MAX. PSI G
CwM 9-4 MJB 6 x FP 25	82.0	72.6	1/4-18 NPTF	9/16-18 UN	13.5	6.4	20.6	30.2	5,000
CwM 9-8 MJB 8 x FP 38	93.2	81.0	3/8-18 NPTF	3/4-16 UN	16.5	10.3	25.4	38.0	5,000
CwM 9-8 MJB 8 x FP 50	96.7	82.8	1/2-14 NPTF	3/4-16 UN	14.8	10.3	25.4	38.0	5,000
CwM 9-8 MJB 10 x FP 38	102.2	88.3	3/8-18 NPTF	7/8-14 UN	16.5	12.3	28.6	38.0	5,000
CwM 9-8 MJB 10 x FP 50	102.2	88.3	1/2-14 NPTF	7/8-14 UN	14.8	12.3	28.6	38.0	5,000
CwM 9-12 MJB 12 x FP 75	113.7	96.8	3/4-14 NPTF	1 1/16-12 UN	16.3	15.5	34.9	43.4	4,500
CwM 9-16 MJB 16 x FP 100	135.4	114.9	1-11.5 NPTF	1 5/16-12 UN	18.8	21.0	41.3	54.9	4,000
CwM 9-20 MJB 20 x FP 125	147.5	122.9	1 1/4-11.5 NPTF	1 5/8-12 UN	26.6	27.4	47.6	68.6	4,000

**Male O-Ring (ORB)
x
Female O-Ring (ORB)**



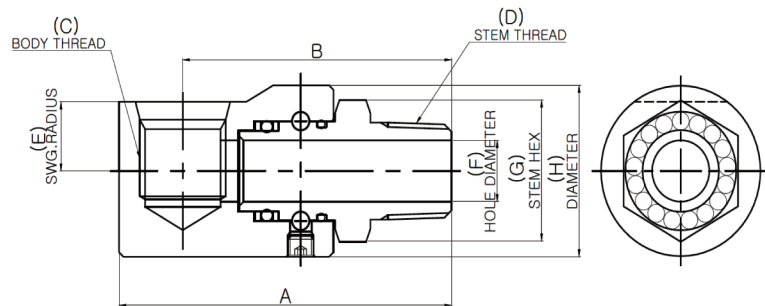
PART NUMBER	A	B	C	D	E	F	G	H	MAX. PSI G
CwM 9-4 MO 4 x FO 6	69.3	56.3	9/16-18 UN	7/16-20 UN	13.7	4.4	15.9	32.8	5,000
CwM 9-4 MO 6 x FO 6	69.3	56.3	9/16-18 UN	9/16-18 UN	13.7	6.4	19.1	32.8	5,000
CwM 9-8 MO 8 x FO 8	74.2	60.3	3/4-16 UN	3/4-16 UN	17.9	9.9	25.4	42.2	5,000
CwM 9-8 MO 10 x FO 8	77.5	63.5	3/4-16 UN	7/8-14 UN	17.9	12.3	25.4	42.2	5,000
CwM 9-12 MO 12 x FO 12	94.2	73.3	1 1/16-12 UN	1 1/16-12 UN	22.9	15.5	34.9	55.2	4,500
CwM 9-16 MO 16 x FO 16	117.5	94.2	1 5/16-12 UN	1 5/16-12 UN	25.6	21.0	41.3	63.0	4,000
CwM 9-20 MO 20 x FO 20	130.2	102.7	1 5/8-12 UN	1 5/8-12 UN	30.1	27.4	47.6	75.6	4,000

**Female Pipe (NPTF)
x
Female O-Ring (ORB)**



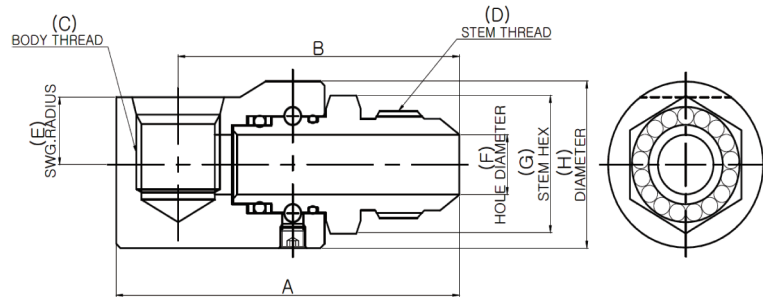
PART NUMBER	A	B	C	D	E	F	G	H	MAX. PSI G
CwM 9-4 FP25 x FO 6	63.8	30.8	9/16-18 UN	1/4-18 NPTF	13.7	6.4	19.1	30.3	5,000
CwM 9-8 FP 38 x FO 8	67.8	54.0	3/4-16 UN	3/8-18 NPTF	17.9	13.5	22.2	42.2	5,000
CwM 9-8 FP 50 x FO 8	71.6	57.7	3/4-16 UN	1/2-14 NPTF	17.9	13.5	28.6	42.2	5,000
CwM 9-12 FP 75 x FO 12	84.3	63.5	1 1/16-12 UN	3/4-14 NPTF	22.9	15.5	34.9	55.2	4,500
CwM 9-16 FP 100 x FO 16	106.7	83.3	1 5/16-12 UN	1-11.5 NPTF	25.6	21.0	41.3	63.0	4,000
CwM 9-20 FP 125 x FO 20	118.4	90.8	1 5/8-12 UN	1 1/4-11.5 NPTF	30.1	30.0	50.8	75.6	4,000

**Female Pipe (NPTF)
x
Female O-Ring (ORB)**



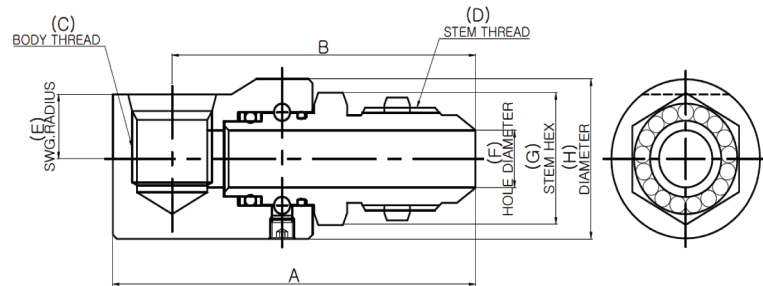
PART NUMBER	A	B	C	D	E	F	G	H	MAX. PSI G
CwM 9-4 MP25 x FO 6	67.1	54.1	9/16-18 UN	1/4-18 NPTF	13.7	6.4	15.9	32.8	5,000
CwM 9-4 MP 38 x FO 6	69.1	55.9	9/16-18 UN	3/8-18 NPTF	13.7	6.4	19.1	32.8	5,000
CwM 9-8 MP 38 x FO 8	78.7	64.8	3/4-16 UN	3/8-18 NPTF	17.9	10.3	25.4	42.2	5,000
CwM 9-8 MP 50 x FO 8	80.5	66.6	3/4-16 UN	1/2-14 NPTF	17.9	13.5	25.4	42.2	5,000
CwM 9-12 MP 75 x FO 12	94.5	73.5	1 1/16-12 UN	3/4-14 NPTF	22.9	15.5	28.6	55.2	4,500
CwM 9-16 MP 100 x FO 16	118.8	95.5	1 5/16-12 UN	1-11.5 NPTF	25.6	21.0	34.9	63.0	4,000
CwM 9-20 MP 125 x FO 20	131.2	103.7	1 5/8-12 UN	1 1/4-11.5 NPTF	30.10	30.00	44.45	75.62	4,000

**Male JIC (37°)
x
Female O-Ring (ORB)**



PART NUMBER	A	B	C	D	E	F	G	H	MAX. PSI G
CwM 9-4 MJ 4 x FO 6	72.1	59.1	9/16-18 UN	7/16-20 UN	13.7	4.4	19.1	32.8	5,000
CwM 9-4 MJ 6 x FO 6	72.6	59.6	9/16-18 UN	9/16-18 UN	13.7	6.4	19.1	32.8	5,000
CwM 9-8 MJ 8 x FO 8	78.0	64.0	3/4-16 UN	3/4-16 UN	17.9	9.9	25.4	42.2	5,000
CwM 9-8 MJ 10 x FO 8	80.5	66.0	3/4-16 UN	7/8-14 UN	17.9	12.3	25.4	42.2	5,000
CwM 9-12 MJ 12 x FO 12	97.7	76.7	1 1/16-12 UN	1 1/16-12 UN	22.9	15.5	34.9	55.2	4,500
CwM 9-16 MJ 16 x FO 16	119.3	96.0	1 5/16-12 UN	1 5/16-12 UN	25.6	21.0	41.3	63.0	4,000
CwM 9-20 MJ 20 x FO 20	132.3	104.8	1 5/8-12 UN	1 5/8-12 UN	30.1	27.4	44.5	75.6	4,000

**Male JIC Bulkhead (37°)
x
Female O-Ring (ORB)**



PART NUMBER	A	B	C	D	E	F	G	H	MAX. PSI G
CwM 9-4 MJB 6 x FO 6	88.9	76.0	9/16-18 UN	9/16-18 UN	14.7	6.4	20.6	32.8	5,000
CwM 9-8 MJB 8 x FO 8	96.5	82.3	3/4-16 UN	3/4-16 UN	17.9	9.9	25.4	42.2	5,000
CwM 9-8 MJB 10 x FO 8	102.4	88.4	3/4-16 UN	7/8-14 UN	17.9	12.3	28.6	42.2	5,000
CwM 9-12 MJB 12 x FO 12	121.0	100.1	1 1/16-12 UN	1 1/16-12 UN	22.9	15.5	34.9	55.2	4,500
CwM 9-16 MJB 16 x FO 16	140.5	117.2	1 5/16-12 UN	1 5/16-12 UN	25.6	21.0	41.3	63.0	4,000
CwM 9-20 MJB 20 x FO 20	155.0	127.5	1 5/8-12 UN	1 5/8-12 UN	30.1	27.4	47.6	75.6	4,000