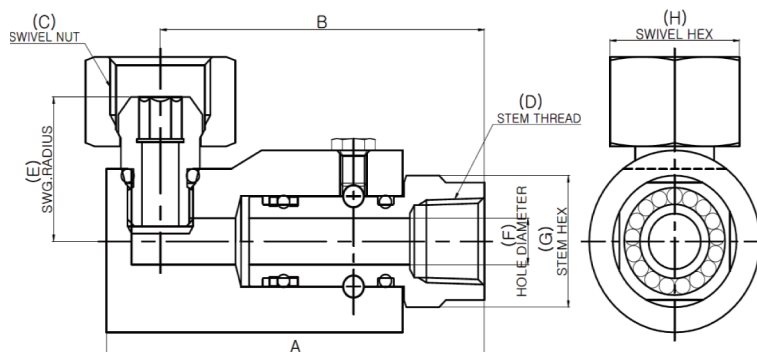


Product Dimensions

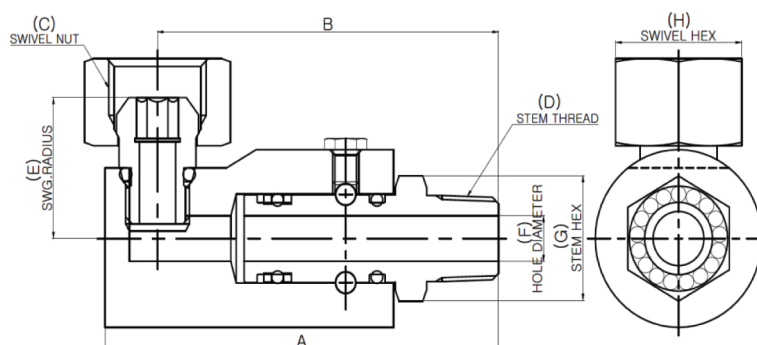
9A-PIPE

**Female Pipe (NPTF)
x
Pipe Swivel (NPSM)**



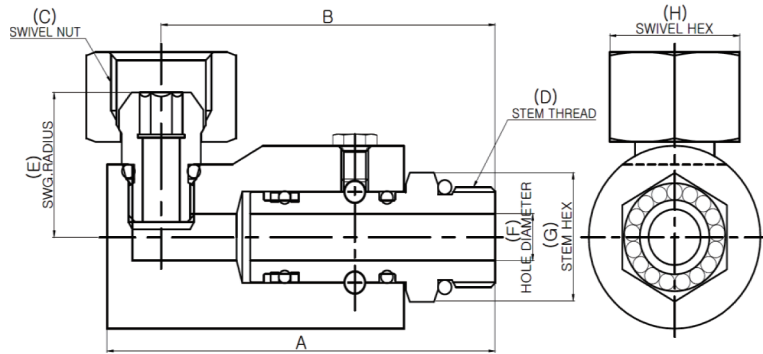
PART NUMBER	A	B	C	D	E	F	G	H	MAX. PSI G
CwM 9-4 FP 25 x PS 25	63.8	50.8	1/4-18 NPSM	1/4-18 NPTF	33.7	5.5	19.1	17.5	3,500
CwM 9-4 FP 25 x PS 38	63.8	50.8	3/8-18 NPSM	1/4-18 NPTF	39.5	6.4	19.1	22.2	3,500
CwM 9-8 FP 38 x PS 38	67.8	53.9	3/8-18 NPSM	3/8-18 NPTF	36.5	8.3	22.2	22.2	3,500
CwM 9-8 FP 50 x PS 50	72.4	57.7	1/2-14 NPSM	1/2-14 NPTF	38.6	9.9	28.6	25.4	3,500
CwM 9-12 FP 75 x PS 75	78.2	59.9	3/4-14 NPSM	3/4-14 NPTF	42.3	13.2	34.9	31.8	3,500
CwM 9-16 FP 100 x PS 100	97.8	75.7	1-11.5 NPSM	1-11.5 NPTF	49.7	15.0	41.3	38.1	3,500
CwM 9-20 FP 125 x PS 125	110.9	83.4	1 1/4-11.5 NPSM	1 1/4-11.5 NPTF	65.3	23.0	50.8	47.6	3,500
CwM 9-24 FP 150 x PS 150	142.2	111.1	1 1/2-11.5 NPSM	1 1/2-11.5 NPTF	66.8	26.4	66.8	54.0	3,500

**Male Pipe (NPTF)
x
Pipe Swivel (NPSM)**



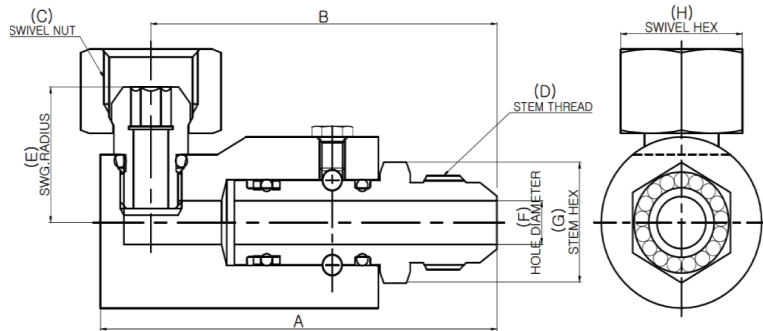
PART NUMBER	A	B	C	D	E	F	G	H	MAX. PSI G
CwM 9-4 MP 25 x PS 25	67.1	53.9	1/4-18 NPSM	1/4-18 NPTF	33.7	5.5	15.9	17.5	3,500
CwM 9-4 MP 38 x PS 25	69.1	56.1	1/4-18 NPSM	3/8-18 NPTF	33.7	5.5	19.1	17.5	3,500
CwM 9-4 MP 25 x PS 38	67.1	53.9	3/8-18 NPSM	1/4-18 NPTF	39.5	6.4	15.9	22.2	3,500
CwM 9-4 MP 38 x PS 38	69.1	56.1	3/8-18 NPSM	3/8-18 NPTF	39.5	6.4	19.1	22.2	3,500
CwM 9-8 MP 38 x PS 38	78.6	64.7	3/8-18 NPSM	3/8-18 NPTF	36.5	8.3	25.4	22.2	3,500
CwM 9-8 MP 50 x PS 50	80.5	66.6	1/2-14 NPSM	1/2-14 NPTF	38.6	9.9	25.4	25.4	3,500
CwM 9-12 MP 75 x PS 75	88.4	70.1	3/4-14 NPSM	3/4-14 NPTF	42.3	13.2	28.6	31.8	3,500
CwM 9-16 MP 100 x PS 100	109.9	87.9	1-11.5 NPSM	1-11.5 NPTF	49.7	15.0	34.9	38.1	3,500
CwM 9-20 MP 125 x PS 125	123.9	96.4	1 1/4-11.5 NPSM	1 1/4-11.5 NPTF	65.3	23.0	44.5	47.6	3,500
CwM 9-24 MP 150 x PS 150	157.1	125.9	1 1/2-11.5 NPSM	1 1/2-11.5 NPTF	66.8	26.4	50.8	54.0	3,500

**Male O-Ring (ORB)
x
Pipe Swivel (NPSM)**



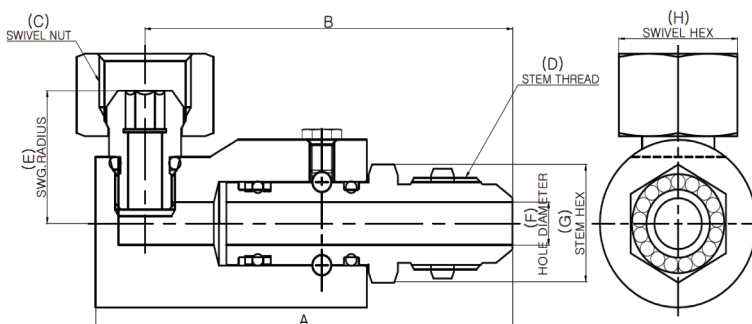
PART NUMBER	A	B	C	D	E	F	G	H	MAX. PSI G
CwM 9-4 MO 4 x PS 25	69.3	56.3	1/4-18 NPSM	7/16-20 UN	33.7	4.4	15.9	17.5	3,500
CwM 9-4 MO 6 x PS 25	69.3	56.3	1/4-18 NPSM	9/16-18 UN	33.7	5.5	19.1	17.5	3,500
CwM 9-4 MO 6 x PS 38	69.3	56.3	3/8-18 NPSM	9/16-18 UN	39.5	6.4	19.1	22.2	3,500
CwM 9-8 MO 8 x PS 38	74.2	60.4	3/8-18 NPSM	3/4-16 UN	36.5	8.3	25.4	22.2	3,500
CwM 9-8 MO 8 x PS 50	75.0	60.4	1/2-14 NPSM	3/4-16 UN	38.6	8.3	25.4	25.4	3,500
CwM 9-8 MO 10 x PS 50	78.1	63.5	1/2-14 NPSM	7/8-14 UN	38.6	9.9	25.4	25.4	3,500
CwM 9-12 MO 12 x PS 75	88.1	69.8	3/4-14 NPSM	1 1/16-12 UN	42.3	13.2	34.9	31.8	3,500
CwM 9-16 MO 16 x PS 100	108.6	86.6	1-11.5 NPSM	1 5/16-12 UN	49.7	15.0	41.3	38.1	3,500
CwM 9-20 MO 20 x PS 125	122.9	95.4	1 1/4-11.5 NPSM	1 5/8-12 UN	65.3	23.0	47.6	47.6	3,500
CwM 9-24 MO 24 x PS 150	155.1	123.8	1 1/2-11.5 NPSM	1 7/8-12 UN	66.8	26.4	54.0	54.0	3,500

**Male JIC (37°)
x
Pipe Swivel (NPSM)**



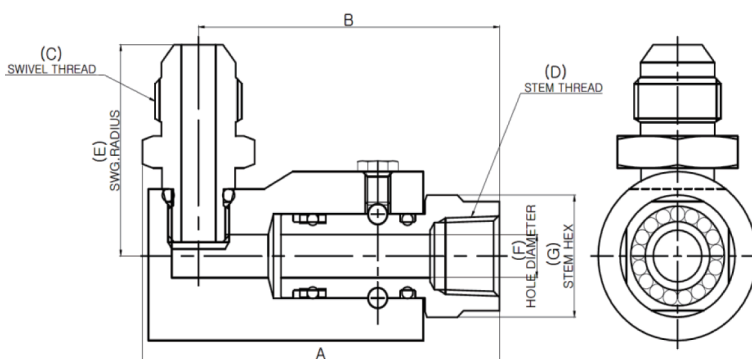
PART NUMBER	A	B	C	D	E	F	G	H	MAX. PSI G
CwM 9-4 MJ 4 x FP 25	72.8	59.8	1/4-18 NPSM	7/16-20 UN	33.7	4.4	19.1	17.5	3,500
CwM 9-4 MJ 6 x FP 25	73.3	60.3	1/4-18 NPSM	9/16-18 UN	33.7	5.5	19.1	17.5	3,500
CwM 9-8 MJ 8 x FP 38	73.3	60.3	3/8-18 NPSM	9/16-18 UN	39.5	6.4	19.1	22.2	3,500
CwM 9-8 MJ 10 x FP 38	78.0	64.1	3/8-18 NPSM	3/4-16 UN	36.5	8.3	25.4	22.2	3,500
CwM 9-8 MJ 8 x FP 50	78.7	64.1	1/2-14 NPSM	3/4-16 UN	38.6	9.9	25.4	25.4	3,500
CwM 9-8 MJ 10 x FP 50	81.3	66.6	1/2-14 NPSM	7/8-14 UN	38.6	9.9	25.4	25.4	3,500
CwM 9-12 MJ 12 x FP 75	91.6	73.3	3/4-14 NPSM	1 1/16-12 UN	42.3	13.2	34.9	31.8	3,500
CwM 9-16 MJ 16 x FP 100	110.4	88.4	1-11.5 NPSM	1 5/16-12 UN	49.7	15.0	41.3	38.1	3,500
CwM 9-20 MJ 20 x FP 125	124.9	97.4	1 1/4-11.5 NPSM	1 5/8-12 UN	65.3	23.0	44.5	47.6	3,500
CwM 9-24 MJ 24 x FP 150	159.4	128.1	1 1/2-11.5 NPSM	1 7/8-12 UN	66.8	26.4	54.0	54.0	3,500

**Male JIC Bulkhead(37°)
x
Pipe Swivel (NPSM)**



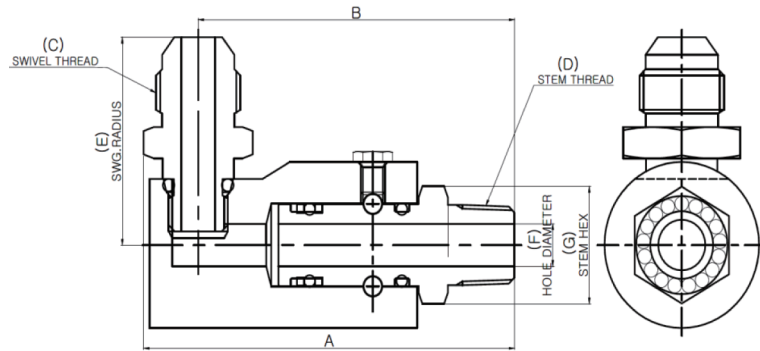
PART NUMBER	A	B	C	D	E	F	G	H	MAX. PSI G
CwM 9-4 MJB 6 x PS 25	88.9	76.0	1/4-18 NPSM	9/16-18 UN	34.3	6.4	20.6	17.5	3,500
CwM 9-8 MBJ 8 x PS 38	96.7	82.8	3/8-18 NPSM	3/4-16 UN	36.5	8.3	25.4	22.2	3,500
CwM 9-8 MJB 8 x PS 50	97.4	82.8	1/2-14 NPSM	3/4-16 UN	38.6	8.3	25.4	25.4	3,500
CwM 9-8 MJB 10 x PS 50	103.0	88.3	1/2-14 NPSM	7/8-14 UN	38.6	9.9	28.6	25.4	3,500
CwM 9-12 MJB 12 x PS 75	115.0	96.7	3/4-14 NPSM	1 1/16-12 UN	42.3	13.2	34.9	31.8	3,500
CwM 9-16 MJB 16 x PS 100	131.6	109.7	1-11.5 NPSM	1 5/16-12 UN	49.7	15.0	41.3	38.1	3,500
CwM 9-20 MJB 20 x PS 125	147.6	120.1	1 1/4-11.5 NPSM	1 5/8-12 UN	65.3	23.0	47.6	47.6	3,500

**Female Pipe (NPTF)
x
Male JIC (37°)**



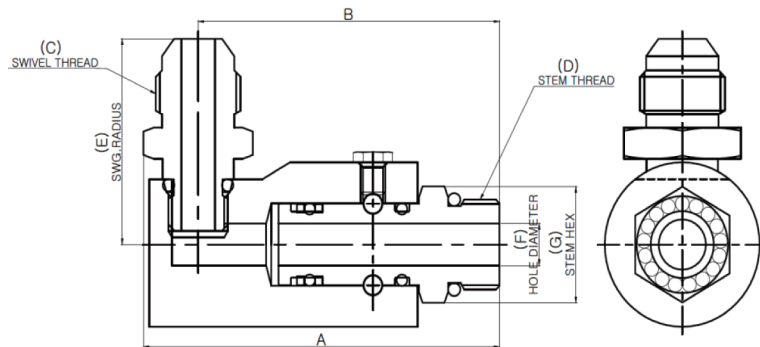
PART NUMBER	A	B	C	D	E	F	G	MAX. PSI G
CwM 9-4 FP 25 x MJ 4	63.8	50.8	7/16-20 UN	1/4-18 NPTF	36.9	4.4	19.1	3,500
CwM 9-4 FP 25 x MJ 6	63.8	50.8	9/16-18 UN	1/4-18 NPTF	36.9	6.4	19.1	3,500
CwM 9-8 FP 38 x MJ 6	67.8	53.9	9/16-18 UN	3/8-18 NPTF	40.2	7.4	22.2	3,500
CwM 9-8 FP 38 x MJ 8	67.8	53.9	3/4-16 UN	3/8-18 NPTF	43.5	7.5	22.2	3,500
CwM 9-8 FP 50 x MJ 8	72.4	57.7	3/4-16 UN	1/2-14 NPTF	43.5	7.5	28.6	3,500
CwM 9-8 FP 50 x MJ 10	73.2	57.7	7/8-14 UN	1/2-14 NPTF	50.2	7.5	28.6	3,500
CwM 9-12 FP 75 x MJ 12	76.2	59.9	1 1/16-12 UN	3/4-14 NPTF	58.1	9.8	34.9	3,500
CwM 9-16 FP 100 x MJ 16	94.7	75.7	1 5/16-12 UN	1-11.5 NPTF	60.6	14.0	41.3	3,500
CwM 9-20 FP 125 x MJ 20	109.2	83.4	1 5/8-12 UN	1 1/4-11.5 NPTF	75.4	21.0	50.8	3,500
CwM 9-24 FP 150 x MJ 24	142.2	111.1	1 7/8-12 UN	1 1/2-11.5 NPTF	78.7	24.0	60.3	3,500

**Male Pipe (NPTF)
x
Male JIC (37°)**



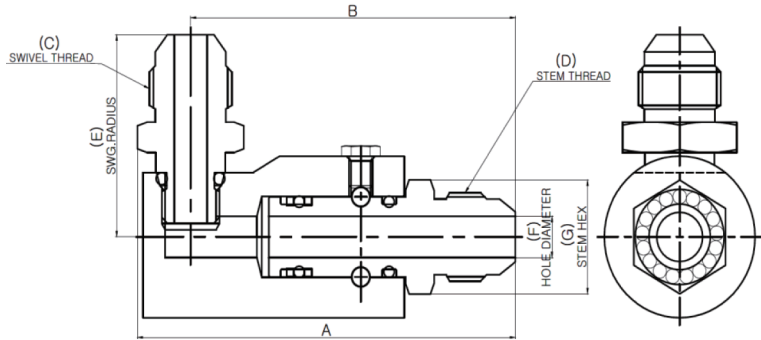
PART NUMBER	A	B	C	D	E	F	G	MAX. PSI G
CwM 9-4 MP 25 x MJ 4	67.1	54.1	7/16-20 UN	1/4-18 NPTF	36.9	4.4	15.9	3,500
CwM 9-4 MP 25 x MJ 6	67.1	54.1	9/16-18 UN	1/4-18 NPTF	36.9	6.4	15.9	3,500
CwM 9-4 MP 38 x MJ 6	69.1	56.1	9/16-18 UN	3/8-18 NPTF	36.9	6.4	19.1	3,500
CwM 9-8 MP 38 x MJ 8	78.5	64.7	3/4-16 UN	3/8-18 NPTF	43.5	7.5	25.4	3,500
CwM 9-8 MP 50 x MJ 8	81.8	67.9	3/4-16 UN	1/2-14 NPTF	43.5	7.5	25.4	3,500
CwM 9-8 MP 50 x MJ 10	80.5	66.6	7/8-14 UN	1/2-14 NPTF	50.2	7.5	25.4	3,500
CwM 9-12 MP 75 x MJ 12	86.6	70.1	1 1/16-12 UN	3/4-14 NPTF	56.8	9.8	28.6	3,500
CwM 9-16 MP 100 x MJ 16	108.1	87.9	1 5/16-12 UN	1-11.5 NPTF	60.6	14.0	34.9	3,500
CwM 9-20 MP 125 x MJ 20	122.1	96.4	1 5/8-12 UN	1 1/4-11.5 NPTF	75.4	21.0	44.5	3,500
CwM 9-24 MP 150 x MJ 24	157.1	125.9	1 7/8-12 UN	1 1/2-11.5 NPTF	78.7	24.0	50.8	3,500

**Male O-Ring (ORB)
x
Male JIC (37°)**



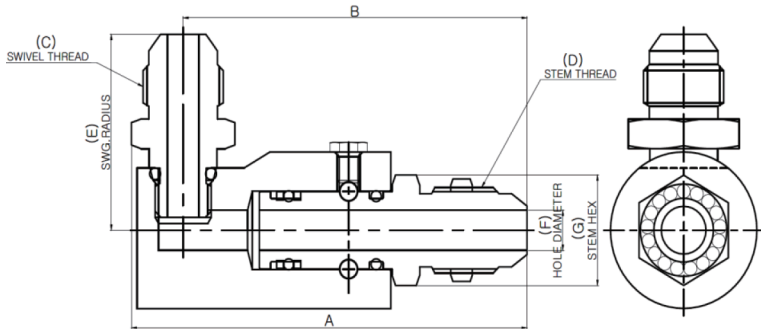
PART NUMBER	A	B	C	D	E	F	G	MAX. PSI G
CwM 9-4 MO 4 x MJ 4	69.3	56.3	7/16-20 UN	7/16-20 UN	36.9	4.4	15.9	3,500
CwM 9-4 MO 6 x MJ 6	69.3	56.3	9/16-18 UN	9/16-18 UN	36.9	6.4	19.1	3,500
CwM 9-8 MO 8 x MJ 8	74.2	60.4	3/4-16 UN	3/4-16 UN	43.5	7.5	25.4	3,500
CwM 9-8 MO 10 x MJ 10	78.1	63.5	7/8-14 UN	7/8-14 UN	50.2	7.5	25.4	3,500
CwM 9-12 MO 12 x MJ 12	86.3	69.8	1 1/16-12 UN	1 1/16-12 UN	58.1	9.8	34.9	3,500
CwM 9-16 MO 16 x MJ 16	106.8	86.6	1 5/16-12 UN	1 5/16-12 UN	60.6	14.0	41.3	3,500
CwM 9-20 MO 20 x MJ 20	121.0	95.4	1 5/8-12 UN	1 5/8-12 UN	75.4	21.0	47.6	3,500
CwM 9-24 MO 24 x MJ 24	155.1	123.8	1 7/8-12 UN	1 7/8-12 UN	78.6	24.0	54.0	3,500

**Male JIC (37°)
x
Male JIC (37°)**



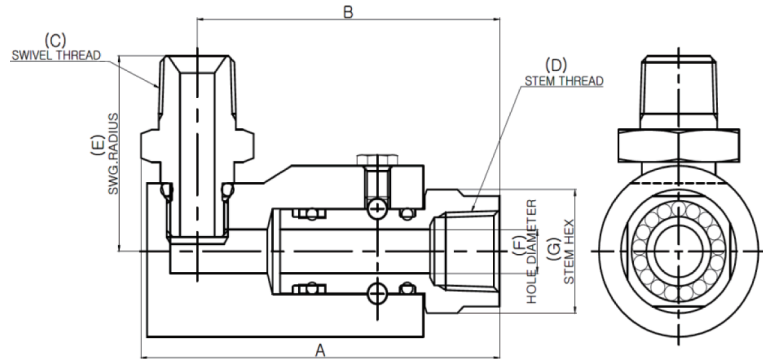
PART NUMBER	A	B	C	D	E	F	G	MAX. PSI G
CwM 9-4 MJ 4 x MJ 4	72.1	59.1	7/16-20 UN	7/16-20 UN	36.9	4.4	19.1	3,500
CwM 9-4 MJ 6 x MJ 6	72.6	59.6	9/16-18 UN	9/16-18 UN	36.9	6.4	19.1	3,500
CwM 9-8 MJ 8 x MJ 8	78.0	64.1	3/4-16 UN	3/4-16 UN	43.5	7.5	25.4	3,500
CwM 9-8 MJ 10 x MJ 10	81.3	66.6	7/8-14 UN	7/8-14 UN	50.2	7.5	25.4	3,500
CwM 9-12 MJ 12 x MJ 12	89.8	73.3	1 1/16-12 UN	1 1/16-12 UN	58.1	9.8	34.9	3,500
CwM 9-16 MJ 16 x MJ 16	108.6	88.4	1 5/16-12 UN	1 5/16-12 UN	60.6	14.0	41.3	3,500
CwM 9-20 MJ 20 x MJ 20	123.1	97.4	1 5/8-12 UN	1 5/8-12 UN	75.4	21.0	44.5	3,500
CwM 9-24 MJ 24 x MJ 24	159.4	128.1	1 7/8-12 UN	1 7/8-12 UN	78.7	24.0	54.0	3,500

**Male JIC Bulkhead (37°)
x
Male JIC (37°)**



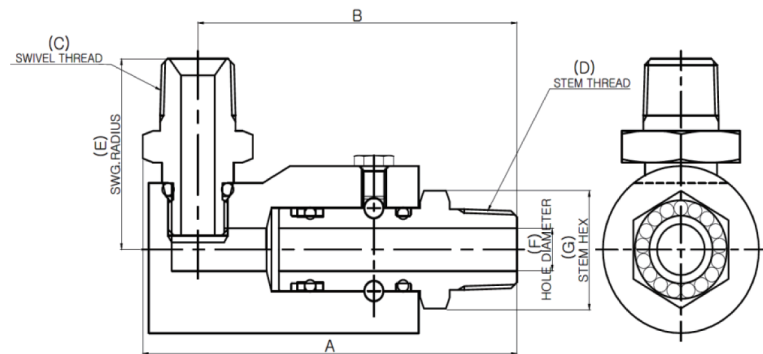
PART NUMBER	A	B	C	D	E	F	G	MAX. PSI G
CwM 9-8 MJB 8 x MJ 8	96.7	82.8	3/4-16 UN	3/4-16 UN	43.5	7.5	25.4	3,500
CwM 9-8 MJB 10 x MJ 8	103.0	88.3	7/8-14 UN	7/8-14 UN	50.2	7.5	25.4	3,500
CwM 9-12 MJB 12 x MJ 12	113.1	96.7	1 1/16-12 UN	1 1/16-12 UN	58.1	9.8	28.6	3,500
CwM 9-16 MJB 16 x MJ 16	129.8	109.7	1 5/16-12 UN	1 5/16-12 UN	60.6	14.0	34.9	3,500
CwM 9-20 MJB 20 x MJ 20	145.8	120.1	1 5/8-12 UN	1 5/8-12 UN	75.4	21.0	47.6	3,500

**Female Pipe (NPTF)
x
Male Pipe (NPTF)**



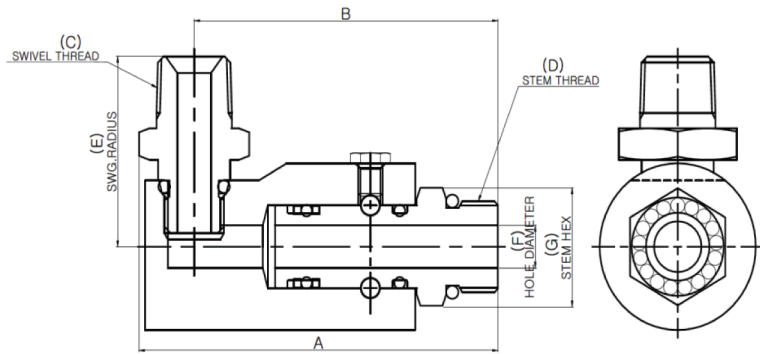
PART NUMBER	A	B	C	D	E	F	G	MAX. PSI G
CwM 9-4 FP 25 x MP 25	63.8	50.8	1/4-18 NPTF	1/4-18 NPTF	36.6	6.4	19.1	3,500
CwM 9-8 FP 38 x MP 38	67.8	53.9	3/8-18 NPTF	3/8-18 NPTF	36.6	7.5	22.2	3,500
CwM 9-8 FP 38 x MP 50	67.8	53.9	1/2-14 NPTF	3/8-18 NPTF	36.6	7.5	22.2	3,500
CwM 9-8 FP 50 x MP 38	72.4	57.7	3/8-18 NPTF	1/2-14 NPTF	39.5	7.5	28.6	3,500
CwM 9-8 FP 50 x MP 50	72.4	57.7	1/2-14 NPTF	1/2-14 NPTF	46.9	7.5	28.6	3,500
CwM 9-12 FP 75 x MP 75	76.2	59.9	3/4-14 NPTF	3/4-14 NPTF	50.8	12.3	34.9	3,500
CwM 9-16 FP 100 x MP 100	96.0	76.8	1-11.5 NPTF	1-11.5 NPTF	60.2	14.0	41.3	3,500
CwM 9-20 FP 125 x MP 125	109.2	83.4	1 1/4-11.5 NPTF	1 1/4-11.5 NPTF	75.9	21.0	50.8	3,500
CwM 9-24 FP 150 x MP 150	142.2	111.1	1 1/2-11.5 NPTF	1 1/2-11.5 NPTF	77.5	24.0	77.5	3,500

**Male Pipe (NPTF)
x
Male Pipe (NPTF)**



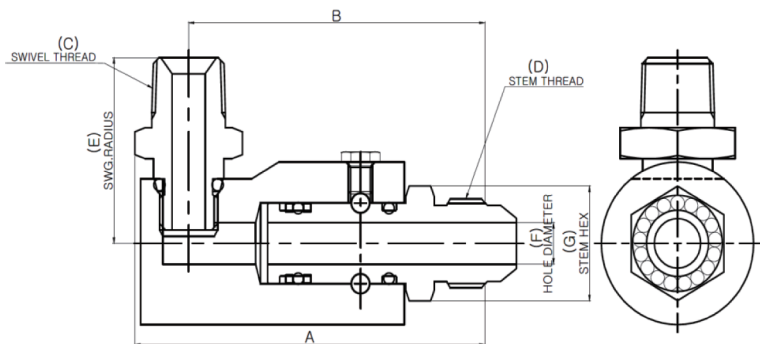
PART NUMBER	A	B	C	D	E	F	G	MAX. PSI G
CwM 9-4 MP 25 x MP 25	67.1	54.1	1/4-18 NPTF	1/4-18 NPTF	36.6	6.4	15.9	3,500
CwM 9-4 MP 25 x MP 38	67.1	54.1	3/8-18 NPTF	1/4-18 NPTF	36.6	7.5	15.9	3,500
CwM 9-4 MP 38 x MP 38	69.1	55.9	3/8-18 NPTF	3/8-18 NPTF	36.6	7.5	19.1	3,500
CwM 9-8 MP 38 x MP 38	78.6	64.7	3/8-18 NPTF	3/8-18 NPTF	39.5	7.5	25.4	3,500
CwM 9-8 MP 38 x MP 50	78.6	64.7	1/2-14 NPTF	3/8-18 NPTF	46.9	7.5	25.4	3,500
CwM 9-8 MP 50 x MP 38	81.0	66.6	3/8-18 NPTF	1/2-14 NPTF	39.5	7.5	25.4	3,500
CwM 9-8 MP 50 x MP 50	81.0	66.6	1/2-14 NPTF	1/2-14 NPTF	46.9	7.5	25.4	3,500
CwM 9-12 MP 75 x MP 75	86.4	70.1	3/4-14 NPTF	3/4-14 NPTF	50.8	12.3	28.6	3,500
CwM 9-16 MP 100 x MP 100	107.3	87.9	1-11.5 NPTF	1-11.5 NPTF	60.2	14.0	34.9	3,500
CwM 9-20 MP 125 x MP 125	122.2	96.4	1 1/4-11.5 NPTF	1 1/4-11.5 NPTF	75.9	21.0	44.5	3,500
CwM 9-24 MP 150 x MP 150	157.1	125.9	1 1/2-11.5 NPTF	1 1/2-11.5 NPTF	77.5	24.0	50.8	3,500

**Male JIC Bulkhead(37°)
x
Pipe Swivel (NPSM)**



PART NUMBER	A	B	C	D	E	F	G	MAX. PSI G
CwM 9-4 MO 4 x MP 25	69.3	56.3	1/4-18 NPTF	7/16-20 UN	36.6	4.4	15.9	3,500
CwM 9-4 MO 6 x MP 25	69.3	56.3	1/4-18 NPTF	9/16-18 UN	36.6	6.4	19.1	3,500
CwM 9-4 MO 6 x MP 38	69.3	56.3	3/8-18 NPTF	9/16-18 UN	36.6	7.5	19.1	3,500
CwM 9-8 MO 8 x MP 38	74.2	60.4	3/8-18 NPTF	3/4-16 UN	39.5	7.5	25.4	3,500
CwM 9-8 MO 8 x MP 50	74.2	60.4	1/2-14 NPTF	3/4-16 UN	46.9	7.5	25.4	3,500
CwM 9-8 MO 10 x MP 38	77.3	63.5	3/8-18 NPTF	7/8-14 UN	39.5	7.5	25.4	3,500
CwM 9-8 MO 10 x MP 50	77.3	63.5	1/2-14 NPTF	7/8-14 UN	46.9	7.5	25.4	3,500
CwM 9-12 MO 12 x MP 75	86.1	69.8	3/4-14 NPTF	1 1/16-12 UN	50.8	12.3	34.9	3,500
CwM 9-16 MO 16 x MP 100	106.9	86.6	1-11.5 NPTF	1 5/16-12 UN	60.2	14.0	41.3	3,500
CwM 9-20 MO 20 x MP 125	121.2	95.4	1 1/4-11.5 NPTF	1 5/8-12 UN	75.9	21.0	47.6	3,500
CwM 9-24 MO 24 x MP 150	155.1	123.8	1 1/2-11.5 NPTF	1 7/8-12 UN	77.5	24.0	54.0	3,500

**Female Pipe (NPTF)
x
Male JIC (37°)**



PART NUMBER	A	B	C	D	E	F	G	MAX. PSI G
CwM 9-4 MJ 4 x MP 25	72.1	59.1	1/4-18 NPTF	7/16-20 UN	36.6	4.4	19.1	3,500
CwM 9-4 MJ 6 x MP 25	72.6	59.6	1/4-18 NPTF	9/16-18 UN	36.6	6.4	19.1	3,500
CwM 9-4 MJ 6 x MP 38	72.6	59.6	3/8-18 NPTF	9/16-18 UN	36.6	6.4	19.1	3,500
CwM 9-8 MJ 8 x MP 38	77.7	63.8	3/8-18 NPTF	3/4-16 UN	39.5	7.5	25.4	3,500
CwM 9-8 MJ 8 x MP 50	77.7	63.8	1/2-14 NPTF	3/4-16 UN	46.9	7.5	25.4	3,500
CwM 9-8 MJ 10 x MP 38	80.3	66.4	3/8-18 NPTF	7/8-14 UN	39.5	6.4	25.4	3,500
CwM 9-8 MJ 10 x MP 50	80.3	66.4	1/2-14 NPTF	7/8-14 UN	46.9	7.5	25.4	3,500
CwM 9-12 MJ 12 x MP 75	89.5	73.3	3/4-14 NPTF	1 1/16-12 UN	50.8	12.3	34.9	3,500
CwM 9-16 MJ 16 x MP 100	109.0	88.4	1-11.5 NPTF	1 5/16-12 UN	60.2	14.0	41.3	3,500
CwM 9-20 MJ 20 x MP 125	123.2	97.4	1 1/4-11.5 NPTF	1 5/8-12 UN	75.9	21.0	44.5	3,500
CwM 9-24 MJ 24 x MP 150	159.4	128.1	1 1/2-11.5 NPTF	1 7/8-12 UN	77.5	24.0	54.0	3,500