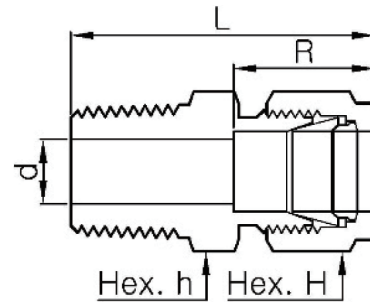


Male Threads

MMC-N

Male Connector, NPT Thread

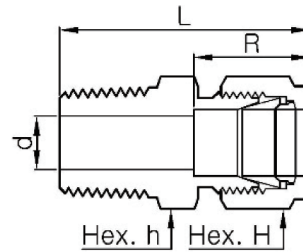


Part Number	TubeOD		NPT	Dimensions				
	inch	mm		d	R	L	h	H
MMC 1 - 1N	1/16	1.6	1/16	1.3	8.6	23.9	5/16	5/16
MMC 1 - 2N	1/16	1.6	1/8	1.3	8.6	26.2	7/16	7/16
MMC 1 - 4N	1/16	1.6	1/4	1.3	8.6	31.0	9/16	5/16
MMC 2 - 1N	1/8	3.2	1/16	2.3	12.7	29.7	7/16	7/16
MMC 2 - 2N	1/8	3.2	1/8	2.3	12.7	30.5	7/16	7/16
MMC 2 - 4N	1/8	3.2	1/4	2.3	12.7	35.6	9/16	7/16
MMC 2 - 6N	1/8	3.2	3/8	2.3	12.7	35.8	11/16	7/16
MMC 2 - 8N	1/8	3.2	1/2	2.3	24.4	42.2	7/8	7/16
MMC 3 - 2N	3/16	4.8	1/8	3.0	13.7	31.2	7/16	1/2
MMC 3 - 4N	3/16	4.8	1/4	3.0	13.7	36.3	9/16	1/2
MMC 4 - 1N	1/4	6.4	1/16	3.0	15.2	32.8	1/2	9/16
MMC 4 - 2N	1/4	6.4	1/8	4.8	15.2	32.8	1/2	9/16
MMC 4 - 4N	1/4	6.4	1/4	4.8	15.2	37.8	9/16	9/16
MMC 4 - 6N	1/4	6.4	3/8	4.8	15.2	38.4	11/16	9/16
MMC 4 - 8N	1/4	6.4	1/2	4.8	15.2	44.7	7/8	9/16
MMC 4 - 12N	1/4	6.4	3/4	4.8	15.2	46.2	1-1/16	9/16
MMC 5 - 2N	5/16	7.9	1/8	4.8	16.3	34.0	9/16	5/8
MMC 5 - 4N	5/16	7.9	1/4	6.4	16.3	38.6	9/16	5/8
MMC 5 - 6N	5/16	7.9	3/8	6.4	16.3	39.1	11/16	5/8
MMC 6 - 2N	3/8	9.5	1/8	4.8	16.8	35.3	5/8	11/16
MMC 6 - 4N	3/8	9.5	1/4	7.1	16.8	39.9	5/8	11/16
MMC 6 - 6N	3/8	9.5	3/8	7.1	16.8	39.9	11/16	11/16
MMC 6 - 8N	3/8	9.5	1/2	7.1	16.8	46.2	7/8	11/16
MMC 6 - 12N	3/8	9.5	3/4	7.1	16.8	47.8	1-1/16	11/16
MMC 6 - 16N	3/8	9.5	1	7.1	16.8	54.4	1-3/8	11/16
MMC 8 - 2N	1/2	12.7	1/8	4.8	22.9	38.9	13/16	7/8
MMC 8 - 4N	1/2	12.7	1/4	6.4	22.9	43.4	13/16	7/8
MMC 8 - 6N	1/2	12.7	3/8	9.7	22.9	43.4	13/16	7/8
MMC 8 - 8N	1/2	12.7	1/2	10.4	22.9	49.0	7/8	7/8
MMC 8 - 12N	1/2	12.7	3/4	10.4	22.9	50.5	1-1/16	7/8
MMC 8 - 16N	1/2	12.7	1	10.4	22.9	57.2	1-3/8	7/8
MMC 10 - 4N	5/8	15.9	1/4	7.1	24.4	44.2	15/16	1
MMC 10 - 6N	5/8	15.9	3/8	9.7	24.4	44.2	15/16	1
MMC 10 - 8N	5/8	15.9	1/2	11.9	24.4	49.0	15/16	1
MMC 10 - 12N	5/8	15.9	3/4	12.7	24.4	50.5	1-1/16	1
MMC 12 - 6N	3/4	19.1	3/8	10.4	24.4	45.7	1-1/16	1-1/8
MMC 12 - 8N	3/4	19.1	1/2	11.9	24.4	50.5	1-1/16	1-1/8
MMC 12 - 12N	3/4	19.1	3/4	15.7	24.4	50.5	1-1/16	1-1/8
MMC 12 - 16N	3/4	19.1	1	15.7	24.4	57.2	1-3/8	1-1/8
MMC 14 - 8N	7/8	22.2	1/2	11.9	25.9	50.5	1-3/16	1-1/4
MMC 14 - 12N	7/8	22.2	3/4	15.7	25.9	50.5	1-3/16	1-1/4
MMC 14 - 16N	7/8	22.2	1	18.3	25.9	57.2	1-3/8	1-1/4
MMC 16 - 8N	1	25.4	1/2	11.9	31.2	57.4	1-3/8	1-1/2
MMC 16 - 12N	1	25.4	3/4	15.7	31.2	57.4	1-3/8	1-1/2
MMC 16 - 16N	1	25.4	1	22.4	31.2	62.2	1-3/8	1-1/2
MMC 20 - 16N	1-1/4	31.8	1	22.4	41.1	77.2	1-3/4	1-7/8
MMC 20 - 20N	1-1/4	31.8	1-1/4	27.7	41.1	77.2	1-3/4	1-7/8
MMC 24 - 24N	1-1/2	38.1	1-1/2	34.0	50.0	88.9	2-1/8	2-1/4
MMC 32 - 32N	2	50.8	2	46.0	67.6	113.5	2-3/4	3

Part Number	Tube OD	NPT	Dimensions				
			d	R	L	h	H
MMC 2M - 2N	2	1/8	1.7	12.9	30.5	12	12
MMC 3M - 2N	3	1/8	2.4	12.9	30.5	12	12
MMC 3M - 4N	3	1/4	2.4	12.9	35.6	14	12
MMC 4M - 2N	4	1/8	2.4	13.7	31.2	15	12
MMC 4M - 4N	4	1/4	2.4	13.7	36.3	14	12
MMC 6M - 2N	6	1/8	4.8	15.3	32.8	14	14
MMC 6M - 4N	6	1/4	4.8	15.3	37.9	14	14
MMC 6M - 6N	6	3/8	4.8	15.3	38.4	18	14
MMC 6M - 8N	6	1/2	4.8	15.3	44.7	22	14
MMC 8M - 2N	8	1/8	4.8	16.2	34.2	15	16
MMC 8M - 4N	8	1/4	6.4	16.2	38.7	15	16
MMC 8M - 6N	8	3/8	6.4	16.2	39.3	18	16
MMC 8M - 8N	8	1/2	6.4	16.2	45.6	22	16
MMC 10M - 2N	10	1/8	4.8	17.2	36.3	18	19
MMC 10M - 4N	10	1/4	7.1	17.2	40.9	18	19
MMC 10M - 6N	10	3/8	7.9	17.2	40.9	18	19
MMC 10M - 8N	10	1/2	7.9	17.2	46.5	22	19
MMC 10M - 12N	10	3/4	7.9	17.2	48.0	27	19
MMC 12M - 2N	12	1/8	4.8	22.8	38.8	22	22
MMC 12M - 4N	12	1/4	7.1	22.8	43.4	22	22
MMC 12M - 6N	12	3/8	9.5	22.8	43.4	22	22
MMC 12M - 8N	12	1/2	9.5	22.8	49.0	22	22
MMC 12M - 12N	14	3/4	9.5	22.8	50.5	27	22
MMC 16M - 6N	16	3/8	9.5	24.4	44.1	24	25
MMC 16M - 8N	16	1/2	11.9	24.4	49.0	24	25
MMC 16M - 12N	16	3/4	12.7	24.4	50.5	27	25
MMC 18M - 8N	18	1/2	11.9	24.4	50.5	27	30
MMC 18M - 12N	18	3/4	15.1	24.4	50.5	27	30
MMC 20M - 8N	20	1/2	11.9	26.0	52.3	30	32
MMC 20M - 12N	20	3/4	15.1	26.0	52.3	30	32
MMC 22M - 12N	22	3/4	15.9	26.0	52.3	30	32
MMC 22M - 16N	22	1	18.3	26.0	57.1	35	32
MMC 25M - 8N	25	1/2	11.9	31.3	57.5	35	38
MMC 25M - 12N	25	3/4	15.9	31.3	5.5	35	38
MMC 25M - 16N	25	1	21.8	31.3	62.3	35	38
MMC 28M - 16N	28	1	24.6	36.6	72.4	41	46
MMC 28M - 20N	28	1-1/4	24.6	36.6	73.1	46	46
MMC 30M - 20N	30	1-1/4	26.2	39.6	77.2	46	50
MMC 32M - 20N	32	1-1/4	28.6	42.0	79.6	46	50
MMC 38M - 24N	38	2	33.7	49.4	91.6	55	60

MMC-R

Male Connector, PT Thread



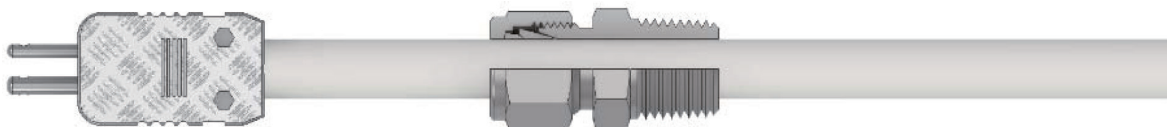
Part Number	Tube OD		PT	Dimensions				
	inch	mm		d	R	L	h	H
MMC 2 - 2R	1/8	3.2	1/8	2.3	12.7	30.5	7/16	7/16
MMC 2 - 4R	1/8	3.2	1/4	2.3	12.7	35.6	9/16	7/16
MMC 4 - 2R	1/4	6.4	1/8	4.8	15.2	32.8	1/2	9/16
MMC 4 - 4R	1/4	6.4	1/4	4.8	15.2	37.8	9/16	9/16
MMC 4 - 6R	1/4	6.4	3/8	4.8	15.2	38.4	11/16	9/16
MMC 4 - 8R	1/4	6.4	1/2	4.8	15.2	44.7	7/8	9/16
MMC 5 - 2R	5/16	7.9	1/8	4.8	16.3	34.0	9/16	5/8
MMC 5 - 4R	5/16	7.9	1/4	6.4	16.3	38.6	9/16	5/8
MMC 6 - 2R	3/8	9.5	1/8	4.8	16.8	35.3	5/8	11/16
MMC 6 - 4R	3/8	9.5	1/4	7.1	16.8	39.9	5/8	11/16
MMC 6 - 6R	3/8	9.5	3/8	7.1	16.8	39.9	11/16	11/16
MMC 6 - 8R	3/8	9.5	1/2	7.1	16.8	46.2	7/8	11/16
MMC 6 - 12R	3/8	9.5	3/4	7.1	16.8	47.8	1-1/16	11/16
MMC 8 - 4R	1/2	12.7	1/4	7.1	22.9	43.4	13/16	7/8
MMC 8 - 6R	1/2	12.7	3/8	9.7	22.9	43.4	13/16	7/8
MMC 8 - 8R	1/2	12.7	1/2	10.4	22.9	49.0	7/8	7/8
MMC 8 - 12R	1/2	12.7	3/4	10.4	22.9	50.5	1-1/16	7/8
MMC10 - 8R	5/8	15.9	1/2	11.9	24.4	49.0	15/16	1
MMC12 - 12R	3/4	19.1	3/4	15.7	24.4	50.5	1-1/16	1-1/8
MMC12 - 16R	3/4	19.1	1	15.7	24.4	57.2	1-3/8	1-1/8
MMC16 - 12R	1	25.4	3/4	16.0	31.2	57.4	1-3/8	1-1/2
MMC16 - 16R	1	25.4	1	22.4	31.2	62.2	1-3/8	1-1/2

Part Number	Tube OD	PT	Dimensions				
			d	R	L	h	H
MMC 2M - 2R	2	1/8	1.7	12.9	30.5	12	12
MMC 3M - 2R	3	1/8	2.4	12.9	30.5	12	12
MMC 3M - 4R	3	1/4	2.4	12.9	35.6	14	12
MMC 4M - 2R	4	1/8	2.4	13.7	31.2	12	12
MMC 4M - 4R	4	1/4	2.4	13.7	36.3	14	12
MMC 6M - 2R	6	1/8	4.8	15.3	32.8	14	14
MMC 6M - 4R	6	1/4	4.8	15.3	37.9	14	14
MMC 6M - 6R	6	3/8	4.8	15.3	38.4	18	14
MMC 6M - 8R	6	1/2	4.8	15.3	44.7	22	14
MMC 8M - 2R	8	1/8	4.8	16.2	34.2	15	16
MMC 8M - 4R	8	1/4	6.4	16.2	38.7	15	16
MMC 8M - 6R	8	3/8	6.4	16.2	39.2	18	16
MMC 8M - 8R	8	1/2	6.4	16.2	45.6	22	16
MMC 10M - 2R	10	1/8	4.8	17.2	36.3	18	19
MMC 10M - 4R	10	1/4	7.1	17.2	40.9	18	19
MMC 10M - 6R	10	3/8	7.9	17.2	40.9	18	19
MMC 10M - 8R	10	1/2	7.9	17.2	46.5	22	19
MMC 10M - 12R	10	3/4	7.9	17.2	48.0	27	19
MMC 12M - 4R	12	1/4	7.1	22.8	43.4	22	22
MMC 12M - 6R	12	3/8	9.5	22.8	43.4	22	22
MMC 12M - 8R	12	1/2	9.5	22.8	49.0	22	22
MMC 12M - 12R	12	3/4	9.5	22.8	50.5	27	22
MMC 16M - 4R	16	1/4	7.1	24.4	44.1	24	25
MMC 16M - 6R	16	3/8	9.5	24.4	44.1	24	25
MMC 16M - 8R	16	1/2	11.9	24.4	49.0	24	25
MMC 16M - 12R	16	3/4	12.7	24.4	50.5	27	25
MMC 18M - 8R	18	1/2	11.9	24.4	50.5	27	30
MMC 18M - 12R	18	3/4	15.1	24.4	50.5	27	30
MMC 20M - 8R	20	1/2	11.9	26.0	52.3	30	32
MMC 20M - 12R	20	3/4	15.9	26.0	52.3	30	32
MMC 22M - 12R	22	3/4	15.9	26.0	52.3	30	32
MMC 22M - 16R	22	1	18.3	26.0	57.1	35	32
MMC 25M - 8R	25	1/2	11.9	31.3	57.5	35	38
MMC 25M - 12R	25	3/4	15.9	31.3	57.5	35	38
MMC 25M - 16R	25	1	21.8	31.3	62.3	35	38
MMC 28M - 16R	28	1	21.8	36.6	72.4	41	46
MMC 28M - 20R	28	1	21.8	36.6	73.1	16	46
MMC 30M - 20R	30	1-1/4	26.2	39.6	77.2	16	50
MMC 32M - 20R	32	1-1/4	38.6	42.0	79.6	16	50
MMC 38M - 24R	38	1-1/2	33.7	49.4	91.6	55	60

MMCT

Thermocouple Male Connector

The M-Lok bore-through male connector can be used with either a thermocouple or dip-tube. Bore-through fitting is available for most male connectors, but male connectors whose pipe thread size is smaller than the size of the tube fitting cannot be penetrated. M-Lok bore-through reducers and standard M-Lok tees can be used for heat exchangers.

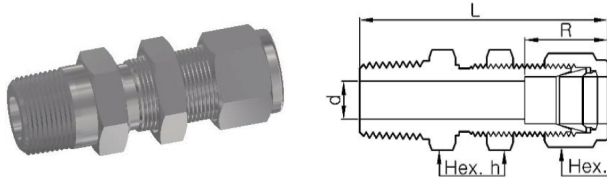


Assembly Instruction

1. Pass the length direction of the thermocouple through the male connector and fix it so that it does not move during assembly.
2. While holding the fitting body with a spanner, turn the nut 1 1/4 turns.

MMCB

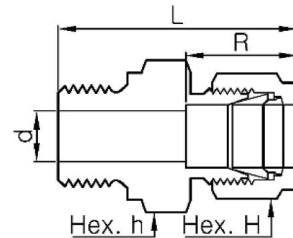
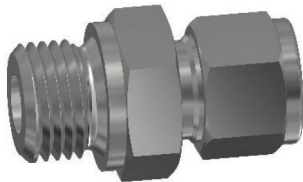
Bulkhead Male Connector



Part Number	Tube OD		Dimensions				
	inch	mm	d	R	L	h	H
MMCB 2 - 2	1/8	3.2	2.3	12.7	46.5	1/2	7/16
MMCB 4 - 2	1/4	6.4	4.8	15.2	49.5	5/8	9/16
MMCB 4 - 4	1/4	6.4	4.8	15.2	54.1	5/8	6
MMCB 6 - 4	3/8	9.5	7.1	16.8	57.4	3/4	11/16
MMCB 6 - 6	3/8	9.5	7.1	16.8	57.4	3/4	11/16
MMCB 6 - 8	3/8	9.5	7.1	16.8	63.8	7/8	11/16
MMCB 8 - 6	1/2	12.7	9.7	22.9	63.2	15/16	7/8
MMCB 8 - 8	1/2	12.7	10.4	22.9	68.8	15/16	7/8
MMCB12 - 12	3/4	19.1	15.7	24.4	76.2	1-3/16	1-1/8
MMCB16 - 16	1	25.4	22.4	31.2	93.2	1-5/8	1-1/2

MMC-G

Bonded Gasket Male Connector

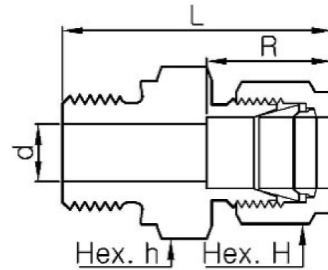
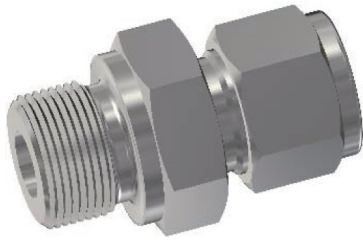


Part Number	Tube OD		PF	Dimensions				
	inch	mm		d	R	L	h	H
MMC 2 - 2G	1/8	3.2	1/8	2.3	12.7	33.3	9/16	7/16
MMC 2 - 4G	1/8	3.2	1/4	2.3	12.7	38.1	3/4	7/16
MMC 2 - 6G	1/8	3.2	3/8	2.3	12.7	38.9	7/8	7/16
MMC 4 - 2G	1/4	6.4	1/8	4.1	15.2	35.6	9/16	9/16
MMC 4 - 4G	1/4	6.4	1/4	4.8	15.2	40.4	3/4	9/16
MMC 4 - 6G	1/4	6.4	3/8	4.8	15.2	41.1	7/8	9/16
MMC 4 - 8G	1/4	6.4	1/2	4.8	15.2	43.2	11/16	9/16
MMC 6 - 2G	3/8	9.5	1/8	4.1	16.8	37.8	5/8	11/16
MMC 6 - 4G	3/8	9.5	1/4	5.8	16.8	41.9	3/4	11/16
MMC 6 - 6G	3/8	9.5	3/8	7.1	16.8	42.7	7/8	11/16
MMC 6 - 8G	3/8	9.5	1/2	7.1	16.8	44.7	1-1/16	11/16
MMC 8 - 4G	1/2	12.7	1/4	5.8	22.9	44.7	13/16	7/8
MMC 8 - 6G	1/2	12.7	3/8	7.9	22.9	45.5	7/8	7/8
MMC 8 - 8G	1/2	12.7	1/2	10.4	22.9	47.5	1-1/16	7/8
MMC12 - 8G	3/4	19.1	1/2	11.9	24.4	48.8	1-1/16	1-1/8
MMC12 - 12G	3/4	19.1	3/4	15.7	24.4	52.1	1-5/16	1-1/8
MMC16 - 8G	1	25.4	1/2	11.9	31.2	55.6	1-3/8	1-1/2
MMC16 - 12G	1	25.4	3/4	16.0	31.2	57.7	1-3/8	1-1/2
MMC16 - 16G	1	25.4	1	19.8	31.2	59.7	1-5/8	1-1/2

Part Number	Tube OD	PF	Dimensions				
			d	R	L	h	H
MMC 2M - 2G	2	1/8	1.7	12.9	33.3	14	12
MMC 3M - 2G	3	1/8	2.4	12.9	33.3	14	12
MMC 3M - 4G	3	1/4	2.4	12.9	38.1	19	12
MMC 4M - 2G	4	1/8	2.4	13.7	34.0	14	12
MMC 6M - 2G	6	1/8	4.0	15.3	35.6	14	14
MMC 6M - 4G	6	1/4	4.8	15.3	40.4	19	14
MMC 6M - 6G	6	3/8	4.8	15.3	41.1	22	14
MMC 6M - 8G	6	1/2	4.8	15.3	43.2	27	14
MMC 8M - 2G	8	1/8	4.0	16.2	36.6	15	16
MMC 8M - 4G	8	1/4	5.9	16.2	41.4	19	16
MMC 8M - 6G	8	3/8	6.4	16.2	42.2	22	16
MMC 8M - 8G	8	1/2	6.4	16.2	44.2	27	16
MMC 10M - 4G	10	1/4	5.9	17.2	42.2	19	19
MMC 10M - 6G	10	3/8	7.9	17.2	42.9	22	19
MMC 10M - 8G	10	1/2	7.9	17.2	45.0	27	19
MMC 12M - 4G	12	1/4	5.9	22.8	44.5	22	22
MMC 12M - 6G	12	3/8	7.9	22.8	45.5	22	22
MMC 12M - 8G	12	1/2	9.5	22.8	47.5	27	22
MMC 12M - 12G	12	3/4	9.5	22.8	52.1	35	22
MMC 16M - 6G	16	3/8	7.9	24.4	45.5	24	25
MMC 16M - 8G	16	1/2	11.9	24.4	47.5	27	25
MMC 16M - 12G	16	3/4	12.7	24.4	52.8	35	25
MMC 18M - 8G	18	1/2	11.9	24.4	48.8	27	30
MMC 18M - 12G	18	3/4	15.1	24.4	52.1	35	30
MMC 20M - 8G	20	1/2	11.9	26.0	50.5	30	32
MMC 20M - 12G	20	3/4	15.9	26.0	52.6	35	32
MMC 22M - 12G	22	3/4	15.9	26.0	52.6	35	32
MMC 22M - 16G	22	1	18.3	26.0	54.9	41	32
MMC 25M - 12G	25	3/4	15.9	31.3	57.7	35	38
MMC 25M - 16G	25	1	19.8	31.3	59.7	41	38
MMC 28M - 16G	28	1	19.8	36.6	69.9	41	46
MMC 28M - 20G	28	1-1/4	21.8	36.6	72.9	50	46
MMC 30M - 20G	30	1-1/4	26.2	39.6	76.7	50	50
MMC 32M - 20G	32	1-1/4	28.6	42.0	79.2	50	50
MMC 38M - 24G	38	1-1/2	31.8	49.4	90.9	55	60

MMC-GB

Metal Gasket Male Connector

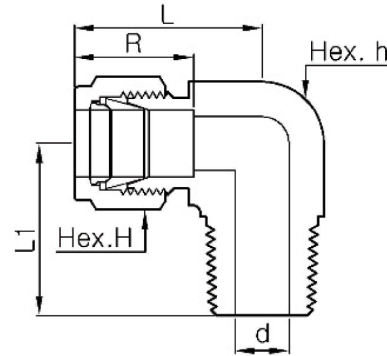


Part Number	Tube OD		PF	Dimensions				
	inch	mm		d	R	L	h	H
MMC 2 - 2 GB	1/8	3.2	1/8	2.3	12.7	33.3	9/16	7/16
MMC 2 - 4 GB	1/8	3.2	1/4	2.3	12.7	38.1	3/4	7/16
MMC 4 - 2 GB	1/4	6.4	1/8	4.1	15.2	35.6	9/16	9/16
MMC 4 - 4 GB	1/4	6.4	1/4	4.8	15.2	40.4	3/4	9/16
MMC 8 - 6 GB	1/2	12.7	3/8	7.9	22.9	45.5	7/8	7/8
MMC 8 - 8 GB	1/2	12.7	1/2	10.4	22.9	47.5	1-1/16	7/8
MMC12 - 8 GB	3/4	19.1	1/2	11.9	24.4	48.8	1-1/16	1-1/8
MMC12 - 12 GB	3/4	19.1	3/4	15.7	24.4	52.1	1-5/16	1-1/8
MMC16 - 16 GB	1	25.4	1	19.8	31.2	59.7	1-5/8	1-1/2

Part Number	Tube OD	PF	Dimensions				
			d	R	L	h	H
MMC 3M - 2 GB	3	1/8	2.4	12.9	33.3	14	12
MMC 3M - 4 GB	3	1/4	2.4	12.9	38.1	19	12
MMC 4M - 2 GB	4	1/8	2.4	13.7	34.0	14	12
MMC 6M - 2 GB	6	1/8	4.0	15.3	35.6	14	14
MMC 6M - 4 GB	6	1/4	4.8	15.3	40.4	19	14
MMC 6M - 6 GB	6	3/8	4.8	15.3	41.1	22	14
MMC 6M - 8 GB	6	1/2	4.8	15.3	43.2	27	14
MMC 8M - 2 GB	8	1/8	4.0	16.2	36.5	15	16
MMC 8M - 4 GB	8	1/4	5.9	16.2	41.3	19	16
MMC 8M - 6 GB	8	3/8	6.4	16.2	41.9	22	16
MMC 8M - 8 GB	8	1/2	6.4	16.2	44.1	27	16
MMC10M - 4 GB	10	1/4	5.9	17.2	42.2	19	19
MMC10M - 6 GB	10	3/8	7.9	17.2	42.9	22	19
MMC10M - 8 GB	10	1/2	7.9	17.2	45.0	27	19
MMC12M - 4 GB	12	1/4	5.9	22.8	45.4	22	22
MMC12M - 6 GB	12	3/8	7.9	22.8	45.4	22	22
MMC12M - 8 GB	12	1/2	9.5	22.8	47.5	27	22
MMC12M - 12 GB	12	3/4	9.5	22.8	52.1	35	22
MMC16M - 6 GB	16	3/8	7.9	24.4	45.4	24	25
MMC16M - 8 GB	16	1/2	11.9	24.4	47.5	27	25
MMC18M - 8 GB	18	1/2	11.9	24.4	49.0	27	30
MMC18M - 12 GB	18	3/4	15.1	24.4	52.3	35	30
MMC20M - 8 GB	20	1/2	11.9	26.0	50.5	30	32
MMC20M - 12 GB	20	3/4	15.9	26.0	52.5	35	32
MMC22M - 12 GB	22	3/4	15.9	26.0	52.8	35	32
MMC22M - 16 GB	22	1	18.3	26.0	54.5	41	32
MMC25M - 12 GB	25	3/4	15.9	31.3	57.8	35	38
MMC25M - 16 GB	25	1	19.8	31.3	59.8	41	38
MMC28M - 16 GB	28	1	19.8	36.6	69.8	41	46
MMC28M - 20 GB	28	1-1/4	21.8	36.6	72.9	50	46
MMC30M - 20 GB	30	1-1/4	26.2	39.6	76.8	50	50
MMC32M - 20 GB	32	1-1/4	28.6	42.0	79.2	50	50
MMC38M - 24 GB	38	1-1/2	31.8	49.4	92.1	55	60

MLM-N

Male Elbow, NPT Thread

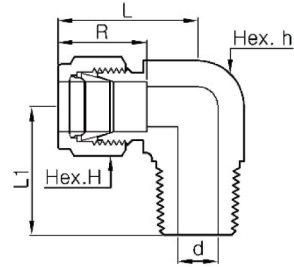


Part Number	Tube OD		NPT	Dimensions						
	inch	mm		d	R	L	L1	h	H	
MLM 1 - 1N	1/16	1.6	1/16	1.3	8.6	19.1	17.8	7/16	5/16	
MLM 1 - 2N	1/16	1.6	1/8	1.3	8.6	19.1	17.8	7/16	5/16	
MLM 2 - 2N	1/8	3.2	1/8	2.3	12.7	23.6	17.8	7/16	7/16	
MLM 2 - 4N	1/8	3.2	1/4	2.3	12.7	24.6	22.8	1/2	7/16	
MLM 3 - 2N	3/16	4.8	1/8	3.0	13.7	25.4	18.8	1/2	1/2	
MLM 3 - 4N	3/16	4.8	1/4	3.0	13.7	25.4	23.4	1/2	1/2	
MLM 4 - 1N	1/4	6.4	1/16	3.0	15.2	26.9	19.1	1/2	9/16	
MLM 4 - 2N	1/4	6.4	1/8	4.8	15.2	26.9	19.1	1/2	9/16	
MLM 4 - 4N	1/4	6.4	1/4	4.8	15.2	26.9	23.9	1/2	9/16	
MLM 4 - 6N	1/4	6.4	3/8	4.8	15.2	29.7	28.4	11/16	9/16	
MLM 4 - 8N	1/4	6.4	1/2	4.8	15.2	31.8	33.0	13/16	9/16	
MLM 5 - 2N	5/16	7.9	1/8	4.8	16.3	28.7	19.8	9/16	5/8	
MLM 5 - 4N	5/16	7.9	1/4	6.4	16.3	28.7	24.4	9/16	5/8	
MLM 5 - 6N	5/16	7.9	3/8	6.4	16.3	30.5	28.4	11/16	5/8	
MLM 6 - 2N	3/8	9.5	1/8	4.8	16.8	30.5	20.6	5/8	11/16	
MLM 6 - 4N	3/8	9.5	1/4	7.1	16.8	30.5	25.4	5/8	11/16	
MLM 6 - 6N	3/8	9.5	3/8	7.1	16.8	31.2	26.2	11/16	11/16	
MLM 6 - 8N	3/8	9.5	1/2	7.1	16.8	33.3	33.0	13/16	11/16	
MLM 6 - 12N	3/8	9.5	3/4	7.1	16.8	37.1	36.8	1-1/16	11/16	
MLM 8 - 4N	1/2	12.7	1/4	7.1	22.9	36.1	28.3	13/16	7/8	
MLM 8 - 6N	1/2	12.7	3/8	9.7	22.9	36.1	28.3	13/16	7/8	
MLM 8 - 8N	1/2	12.7	1/2	10.4	22.9	36.1	33.0	13/16	7/8	
MLM 8 - 12N	1/2	12.7	3/4	10.4	22.9	39.9	36.8	1-1/16	7/8	
MLM10 - 6N	5/8	15.9	3/8	9.7	24.4	38.1	30.2	15/16	1	
MLM10 - 8N	5/8	15.9	1/2	11.9	24.4	38.1	35.0	15/16	1	
MLM10 - 12N	5/8	15.9	3/4	12.7	24.4	39.9	36.8	1-1/16	1	
MLM12 - 8N	3/4	19.1	1/2	11.9	24.4	39.9	36.8	1-1/16	1-1/8	
MLM12 - 12N	3/4	19.1	3/4	15.7	24.4	39.9	36.8	1-1/16	1-1/8	
MLM14 - 12N	7/8	22.2	3/4	15.7	25.9	44.7	41.7	1-3/8	1-1/4	
MLM16 - 12N	1	25.4	3/4	15.7	31.2	49.0	42.2	1-3/8	1-1/2	
MLM16 - 16N	1	25.4	1	22.4	31.2	49.0	46.5	1-3/8	1-1/2	
MLM20 - 20N	1-1/4	31.8	1-1/4	27.7	41.1	67.8	47.8	1-11/16	1-7/8	
MLM24 - 24N	1-1/2	38.1	1-1/2	34.0	50.0	78.7	60.5	2	2-1/4	
MLM32 - 32N	2	50.8	2	46.0	67.6	107.2	70.6	2-3/4	3	

Part Number	Tube OD		NPT	Dimensions						
	inch	mm		d	R	L	L1	h	H	
MLM 3M - 2N	3	1/8	2.4	12.9	23.6	17.8	7/16	12		
MLM 3M - 4N	3	1/4	2.4	12.9	24.6	23.4	1/2	12		
MLM 4M - 2N	4	1/8	2.4	13.7	25.4	18.8	1/2	12		
MLM 4M - 4N	4	1/4	2.4	13.7	25.4	23.4	1/2	12		
MLM 6M - 2N	6	1/8	4.8	15.3	27.0	18.8	1/2	14		
MLM 6M - 4N	6	1/4	4.8	15.3	27.0	23.4	1/2	14		
MLM 6M - 6N	6	3/8	4.8	15.3	29.8	26.2	11/16	14		
MLM 6M - 8N	6	1/2	4.8	15.3	31.8	33.0	13/16	14		
MLM 8M - 2N	8	1/8	4.8	16.2	28.8	19.8	9/16	16		
MLM 8M - 4N	8	1/4	6.4	16.2	28.8	24.4	9/16	16		
MLM 8M - 6N	8	3/8	6.4	16.2	30.6	26.2	11/16	16		
MLM 8M - 8N	8	1/2	6.4	16.2	32.6	33.0	13/16	16		
MLM10M - 2N	10	1/8	4.8	17.2	31.5	23.6	11/16	19		
MLM10M - 4N	10	1/4	7.1	17.2	31.5	26.2	11/16	19		
MLM10M - 6N	10	3/8	7.9	17.2	31.5	26.2	11/16	19		
MLM10M - 8N	10	1/2	7.9	17.2	33.5	33.0	13/16	19		
MLM12M - 4N	12	1/4	7.1	22.8	36.0	28.2	13/16	22		
MLM12M - 6N	12	3/8	9.5	22.8	36.0	28.2	13/16	22		
MLM12M - 8N	12	1/2	9.5	22.8	36.0	33.0	13/16	22		
MLM12M - 12N	12	3/4	9.5	22.8	39.8	36.8	1-1/16	22		
MLM16M - 6N	16	3/8	9.5	24.4	38.0	30.2	15/16	25		
MLM16M - 8N	16	1/2	11.9	24.4	38.0	35.1	15/16	25		
MLM16M - 12N	16	3/4	12.7	24.4	39.8	36.8	1-1/16	25		
MLM18M - 8N	18	1/2	11.9	24.4	39.8	36.8	1-1/16	30		
MLM18M - 12N	18	3/4	15.1	24.4	39.8	36.8	1-1/16	30		
MLM20M - 8N	20	1/2	11.9	26.0	44.6	41.7	1-3/8	32		
MLM20M - 12N	20	3/4	15.9	26.0	44.6	41.7	1-3/8	32		
MLM22M - 12N	22	3/4	15.9	26.0	44.6	41.7	1-3/8	32		
MLM22M - 16N	22	1	18.3	26.0	44.6	46.5	1-3/8	32		
MLM25M - 12N	25	3/4	15.9	31.3	49.1	41.7	1-3/8	38		
MLM25M - 16N	25	1	21.8	31.3	49.1	46.5	1-3/8	38		
MLM30M - 20N	30	1-1/4	26.2	39.6	69.9	53.1	46.0	50		
MLM32M - 20N	32	1-1/4	27.8	42.0	72.3	53.1	46.0	50		
MLM38M - 24N	38	1-1/2	33.7	49.4	84.0	60.4	55.0	60		

MLM-R

Male Elbow, PT Thread



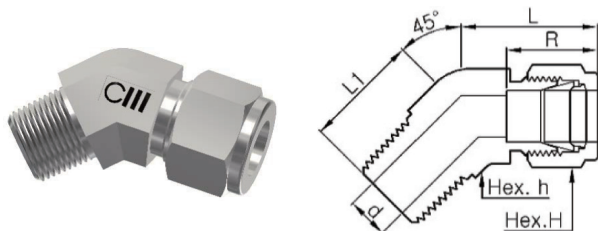
Part Number	Tube OD		PT	Dimensions					
	inch	mm		d	R	L	L1	h	H
MLM 2 - 2R	1/8	3.2	1/8	2.3	12.7	21.1	17.8	7/16	7/16
MLM 2 - 4R	1/8	3.2	1/4	2.3	12.7	24.6	22.8	1/2	7/16
MLM 4 - 2R	1/4	6.4	1/8	4.8	15.2	26.9	19.1	1/2	9/16
MLM 4 - 4R	1/4	6.4	1/4	4.8	15.2	26.9	23.9	1/2	9/16
MLM 4 - 6R	1/4	6.4	3/8	4.8	15.2	29.7	28.4	11/16	9/16
MLM 4 - 8R	1/4	6.4	1/2	4.8	15.2	31.8	33.0	13/16	9/16
MLM 5 - 4R	5/16	7.9	1/4	6.4	16.3	28.7	24.4	9/16	5/8
MLM 5 - 6R	5/16	7.9	3/8	6.4	16.3	30.5	28.4	11/16	5/8
MLM 6 - 2R	3/8	9.5	1/8	7.1	16.8	30.5	20.6	5/8	11/16
MLM 6 - 4R	3/8	9.5	1/4	7.1	16.8	30.5	25.4	5/8	11/16
MLM 6 - 6R	3/8	9.5	3/8	7.1	16.8	31.2	26.2	11/16	11/16
MLM 6 - 8R	3/8	9.5	1/2	7.1	16.8	33.3	33.0	13/16	11/16
MLM 6 - 12R	3/8	9.5	3/4	7.1	16.8	37.1	36.8	1-1/16	11/16
MLM 8 - 4R	1/2	12.7	1/4	7.1	22.9	36.1	28.3	13/16	7/8
MLM 8 - 6R	1/2	12.7	3/8	9.7	22.9	36.1	28.3	13/16	7/8
MLM 8 - 8R	1/2	12.7	1/2	10.4	22.9	36.1	33.0	13/16	7/8
MLM 8 - 12R	1/2	12.7	3/4	10.4	22.9	39.9	36.8	1-1/16	7/8
MLM10 - 6R	5/8	15.9	3/8	9.7	24.4	38.1	30.2	15/16	1
MLM10 - 8R	5/8	15.9	1/2	11.9	24.4	38.1	35.0	15/16	1
MLM10 - 12R	5/8	15.9	3/4	12.7	24.4	39.9	36.8	1-1/16	1
MLM12 - 8R	3/4	19.1	1/2	11.9	24.4	39.9	36.8	1-1/16	1-1/8
MLM12 - 12R	3/4	19.1	3/4	15.7	24.4	39.9	36.8	1-1/16	1-1/8
MLM16 - 12R	1	25.4	3/4	15.7	31.2	49.0	42.2	1-3/8	1-1/2
MLM16 - 16R	1	25.4	1	22.4	31.2	49.0	46.5	1-3/8	1-1/2
MLM20 - 20R	1-1/4	31.8	1-1/4	27.7	41.1	67.8	47.8	1-11/16	1-7/8

Part Number	Tube OD	PT	Dimensions					
			d	R	L	L1	h	H
MLM 3M - 2R	3	1/8	2.4	12.9	23.6	17.8	7/16	12
MLM 3M - 4R	3	1/4	2.4	12.9	24.6	23.4	1/2	12
MLM 4M - 2R	4	1/8	2.4	13.7	25.4	18.8	1/2	12
MLM 4M - 4R	4	1/4	2.4	13.7	25.4	23.4	1/2	12
MLM 6M - 2R	6	1/8	4.8	15.3	27.0	18.8	1/2	14
MLM 6M - 4R	6	1/4	4.8	15.3	27.0	23.4	1/2	14
MLM 6M - 6R	6	3/8	4.8	15.3	29.8	26.2	11/16	14
MLM 6M - 8R	6	1/2	4.8	15.3	31.8	33.0	13/16	14
MLM 8M - 2R	8	1/8	4.8	16.2	28.8	19.8	9/16	16
MLM 8M - 4R	8	1/4	6.4	16.2	28.8	24.4	9/16	16
MLM 8M - 6R	8	3/8	6.4	16.2	30.6	26.2	11/16	16
MLM 8M - 8R	8	1/2	6.4	16.2	32.6	33.0	13/16	16
MLM10M - 4R	10	1/4	7.1	17.2	31.5	26.2	11/16	19
MLM10M - 6R	10	3/8	7.9	17.2	31.5	26.2	11/16	19
MLM10M - 8R	10	1/2	7.9	17.2	33.5	33.0	13/16	19
MLM12M - 2R	10	1/2	4.8	22.8	36.0	23.6	13/16	22
MLM12M - 4R	12	1/4	7.1	22.8	36.0	28.2	13/16	22
MLM12M - 6R	12	3/8	9.5	22.8	36.0	28.2	13/16	22
MLM12M - 8R	12	1/2	9.5	22.8	36.0	33.0	13/16	22
MLM12M - 12R	12	3/4	9.5	22.8	39.8	36.8	1-1/16	22
MLM16M - 6R	16	3/8	9.5	24.4	38.0	30.2	15/16	25
MLM16M - 8R	16	1/2	11.9	24.4	38.0	35.1	15/16	25
MLM18M - 8R	18	1/2	11.9	24.4	39.8	36.8	1-1/16	30
MLM18M - 12R	18	3/4	15.1	24.4	39.8	36.8	1-1/16	30
MLM20M - 8R	20	1/2	11.9	26.0	44.6	41.7	1-3/8	32
MLM20M - 12R	20	3/4	15.9	26.0	44.6	41.7	1-3/8	32
MLM22M - 12R	22	3/4	15.9	26.0	44.6	41.7	1-3/8	32
MLM22M - 16R	22	1	18.3	26.0	44.6	46.5	1-3/8	32
MLM25M - 12R	25	3/4	15.9	31.3	49.1	41.7	1-3/8	38
MLM25M - 16R	25	1	21.8	31.3	49.1	46.5	1-3/8	38
MLM28M - 16R	30	1-1/4	21.8	36.6	64.0	53.1	41.0	46

MLBM

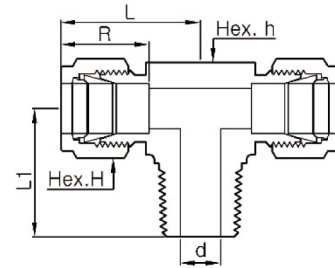
45° Male Elbow

Part Number	Tube OD		NPT	Dimensions					
	inch	mm		d	R	L	L1	h	H
MLBM 4 - 2N	1/4	6.4	1/8	4.8	15.2	12.3	16.5	1/2	9/16
MLBM 4 - 4N	1/4	6.4	1/4	4.8	15.2	14.0	21.1	1/2	9/16
MLBM 6 - 2N	3/8	9.5	1/8	4.8	16.8	27.9	18.3	5/8	11/16
MLBM 6 - 4N	3/8	9.5	1/4	7.1	16.8	14.6	22.9	5/8	11/16
MLBM 6 - 6N	3/8	9.5	3/8	7.1	16.8	16.0	24.1	13/16	11/16
MLBM 8 - 6N	1/2	12.7	3/8	9.7	22.9	16.0	24.1	13/16	7/8
MLBM 8 - 8N	1/2	12.7	1/2	10.4	22.9	16.0	29.0	13/16	7/8
MLBM 12 - 12N	3/4	12.7	3/4	15.7	24.4	16.9	31.0	1-1/8	1-1/8
MLBM 16 - 16N	1	25.4	1	22.4	31.2	20.2	37.8	1-3/8	1-1/2



MTBM

Male Branch Tee



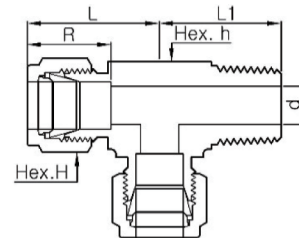
Part Number	Tube OD		NPT	Dimensions					
	inch	mm		d	R	L	L1	h	H
MTBM 2 - 2N	1/8	3.2	1/8	2.3	12.7	23.6	17.8	7/16	7/16
MTBM 2 - 4N	1/8	3.2	1/4	2.3	12.7	24.6	23.4	1/2	7/16
MTBM 3 - 2N	3/16	4.8	1/8	3.0	13.7	24.4	17.8	1/2	1/2
MTBM 3 - 4N	3/16	4.8	1/4	3.0	13.7	25.4	23.4	1/2	1/2
MTBM 4 - 2N	1/4	6.4	1/8	4.8	15.2	26.9	18.8	1/2	9/16
MTBM 4 - 4N	1/4	6.4	1/4	4.8	15.2	26.9	23.4	1/2	9/16
MTBM 4 - 6N	1/4	6.4	3/8	4.8	15.2	29.7	28.4	11/16	9/16
MTBM 5 - 2N	5/16	7.9	1/8	4.8	16.3	29.7	20.8	9/16	5/8
MTBM 5 - 4N	5/16	7.9	1/4	6.4	16.3	29.7	24.4	9/16	5/8
MTBM 6 - 4N	3/8	9.5	1/4	7.1	16.8	30.5	25.4	5/8	11/16
MTBM 6 - 6N	3/8	9.5	3/8	7.1	16.8	33.3	28.2	11/16	11/16
MTBM 6 - 8N	3/8	9.5	1/2	7.1	16.8	33.3	33.0	13/16	11/16
MTBM 8 - 6N	1/2	12.7	3/8	9.7	22.9	36.1	28.2	13/16	7/8
MTBM 8 - 8N	1/2	12.7	1/2	10.4	22.9	36.1	33.0	13/16	7/8
MTBM 8 - 12N	1/2	12.7	3/4	10.4	22.9	39.9	36.8	1-1/16	7/8
MTBM10 - 8N	5/8	15.9	1/2	11.9	24.4	38.9	35.8	15/16	1
MTBM12 - 8N	3/4	19.1	1/2	11.9	24.4	39.9	36.8	1-1/16	1-1/8
MTBM12 - 12N	3/4	19.1	3/4	15.7	24.4	39.9	36.8	1-1/16	1-1/8
MTBM16 - 16N	1	25.4	1	22.4	31.2	49.0	46.5	1-3/8	1-1/2

Part Number	Tube OD	NPT	Dimensions					
			d	R	L	L1	h	H
MTBM 4M - 2N	4	1/8	2.4	13.7	25.4	18.8	1/2	12
MTBM 4M - 4N	4	1/4	2.4	13.7	25.4	23.4	1/2	12
MTBM 6M - 2N	6	1/8	4.8	15.3	27.0	18.8	1/2	14
MTBM 6M - 4N	6	1/4	4.8	15.3	27.0	23.4	1/2	14
MTBM 6M - 6N	6	3/8	4.8	15.3	29.8	26.2	11/16	14
MTBM 8M - 2N	8	1/8	4.8	16.2	29.9	19.8	9/16	16
MTBM 8M - 4N	8	1/4	6.4	16.2	29.9	24.4	9/16	16
MTBM 8M - 6N	8	3/8	6.4	16.2	30.6	26.2	11/16	16
MTBM 10M - 4N	10	1/4	7.1	17.2	33.5	26.2	11/16	19
MTBM 10M - 6N	10	3/8	7.9	17.2	31.5	26.2	11/16	19
MTBM 12M - 4N	12	1/4	7.1	22.8	36.0	28.2	13/16	22
MTBM 12M - 6N	12	3/8	9.5	22.8	36.0	28.2	13/16	22
MTBM 12M - 8N	12	1/2	9.5	22.8	36.0	33.0	13/16	22
MTBM 12M - 12N	12	3/4	9.5	22.8	39.8	36.8	1-1/16	22
MTBM 16M - 8N	16	1/2	11.9	24.4	38.8	35.1	1	25
MTBM 16M - 12N	16	3/4	12.7	24.4	39.8	36.8	1-1/16	25
MTBM 18M - 12N	18	3/4	15.1	24.4	39.8	36.8	1-1/16	30
MTBM 20M - 12N	20	3/4	15.9	26.0	44.6	41.7	1-3/8	32
MTBM 25M - 16N	25	1	21.8	31.3	49.1	46.5	1-3/8	38

*It can be supplied by PT thread upon request. When ordering with a PT thread, use "-R" instead of "-N".

MTRM

Male Run Tee



Part Number	Tube OD		NPT	Dimensions					
	inch	mm		d	R	L	L1	h	H
MTRM 2 - 2N	1/8	3.2	1/8	2.3	12.7	23.6	17.8	7/16	7/16
MTRM 2 - 4N	1/8	3.2	1/4	2.3	12.7	24.6	23.4	1/2	7/16
MTRM 3 - 2N	3/16	4.8	1/8	3.0	13.7	24.4	17.8	1/2	1/2
MTRM 3 - 4N	3/16	4.8	1/4	3.0	13.7	25.4	23.4	1/2	1/2
MTRM 4 - 2N	1/4	6.4	1/8	4.8	15.2	26.9	18.8	1/2	9/16
MTRM 4 - 4N	1/4	6.4	1/4	4.8	15.2	26.9	23.4	1/2	9/16
MTRM 4 - 6N	1/4	6.4	3/8	4.8	15.2	29.7	28.4	11/16	9/16
MTRM 5 - 2N	5/16	7.9	1/8	4.8	16.3	29.7	20.8	9/16	5/8
MTRM 5 - 4N	5/16	7.9	1/4	6.4	16.3	29.7	24.4	9/16	5/8
MTRM 6 - 4N	3/8	9.5	1/4	7.1	16.8	30.5	25.4	5/8	11/16
MTRM 6 - 6N	3/8	9.5	3/8	7.1	16.8	33.3	28.2	11/16	11/16
MTRM 6 - 8N	3/8	9.5	1/2	7.1	16.8	33.3	33.0	13/16	11/16
MTRM 8 - 6N	1/2	12.7	3/8	9.7	22.9	36.1	28.2	13/16	7/8
MTRM 8 - 8N	1/2	12.7	1/2	10.4	22.9	36.1	33.0	13/16	7/8
MTRM 8 - 12N	1/2	12.7	3/4	10.4	22.9	39.9	36.8	1-1/16	7/8
MTRM10 - 8N	5/8	15.9	1/2	11.9	24.4	38.9	35.8	15/16	1
MTRM12 - 8N	3/4	19.1	1/2	11.9	24.4	39.9	36.8	1-1/16	1-1/8
MTRM12 - 12N	3/4	19.1	3/4	15.7	24.4	39.9	36.8	1-1/16	1-1/8
MTRM16 - 16N	1	25.4	1	22.4	31.2	49.0	46.5	1-3/8	1-1/2

Part Number	Tube OD	NPT	Dimensions					
			d	R	L	L1	h	H
MTRM 4M - 2N	4	1/8	2.4	13.7	25.4	18.8	1/2	12
MTRM 4M - 4N	4	1/4	2.4	13.7	25.4	23.4	1/2	12
MTRM 6M - 2N	6	1/8	4.8	15.3	27.0	18.8	1/2	14
MTRM 6M - 4N	6	1/4	4.8	15.3	27.0	23.4	1/2	14
MTRM 6M - 6N	6	3/8	4.8	15.3	29.8	26.2	11/16	14
MTRM 8M - 2N	8	1/8	4.8	16.2	29.9	19.8	9/16	16
MTRM 8M - 4N	8	1/4	6.4	16.2	29.9	24.4	9/16	16
MTRM 8M - 6N	8	3/8	6.4	16.2	30.6	26.2	11/16	16
MTRM 10M - 4N	10	1/4	7.1	17.2	33.5	26.2	11/16	19
MTRM 10M - 6N	10	3/8	7.9	17.2	31.5	26.2	11/16	19
MTRM 12M - 4N	12	1/4	7.1	22.8	36.0	28.2	13/16	22
MTRM 12M - 6N	12	3/8	9.5	22.8	36.0	28.2	13/16	22
MTRM 12M - 8N	12	1/2	9.5	22.8	36.0	33.0	13/16	22
MTRM 12M - 12N	12	3/4	9.5	22.8	39.8	36.8	1-1/16	22
MTRM 16M - 8N	16	1/2	11.9	24.4	38.8	35.1	1	25
MTRM 16M - 12N	16	3/4	12.7	24.4	39.8	36.8	1-1/16	25
MTRM 18M - 12N	18	3/4	15.1	24.4	39.8	36.8	1-1/16	30
MTRM 20M - 12N	20	3/4	15.9	26.0	44.6	41.7	1-3/8	32
MTRM 25M - 16N	25	1	21.8	31.3	49.1	46.5	1-3/8	38

*It can be supplied by PT thread upon request. When ordering with a PT thread, use "-R" instead of "-N".