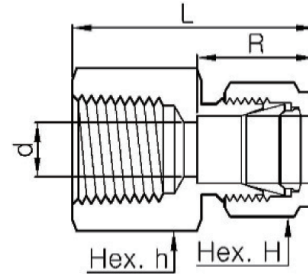
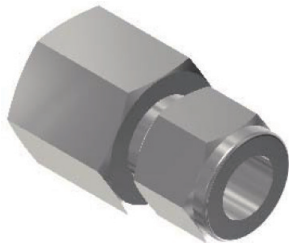


Female Threads

MCF-N (NPT Thread)

Female Connector

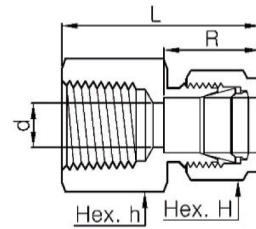


Part Number	Tube OD		NPT	Dimensions				
	inch	mm		d	R	L	h	H
MCF 1 - 1N	1/16	1.6	1/16	1.3	8.6	23.6	7/16	5/16
MCF 1 - 2N	1/16	1.6	1/8	1.3	8.6	24.4	9/16	5/16
MCF 2 - 2N	1/8	3.2	1/8	2.3	12.7	28.7	9/16	7/16
MCF 2 - 4N	1/8	3.2	1/4	2.3	12.7	33.5	3/4	7/16
MCF 3 - 2N	3/16	4.8	1/8	3.0	13.7	29.7	9/16	1/2
MCF 4 - 2N	1/4	6.4	1/8	4.8	15.2	31.2	9/16	9/16
MCF 4 - 4N	1/4	6.4	1/4	4.8	15.2	35.8	3/4	9/16
MCF 4 - 6N	1/4	6.4	3/8	4.8	15.2	37.6	7/8	9/16
MCF 4 - 8N	1/4	6.4	1/2	4.8	15.2	42.4	1-1/16	9/16
MCF 5 - 2N	5/16	7.9	1/8	6.4	16.3	32.0	9/16	5/8
MCF 5 - 4N	5/16	7.9	1/4	6.4	16.3	36.8	3/4	5/8
MCF 6 - 2N	3/8	9.5	1/8	7.1	16.8	32.8	5/8	11/16
MCF 6 - 4N	3/8	9.5	1/4	7.1	16.8	37.6	3/4	11/16
MCF 6 - 6N	3/8	9.5	3/8	7.1	16.8	39.1	7/8	11/16
MCF 6 - 8N	3/8	9.5	1/2	7.1	16.8	43.9	1-1/16	11/16
MCF 6 - 12N	3/8	9.5	3/4	7.1	16.8	47.8	1-5/16	11/16
MCF 8 - 4N	1/2	12.7	1/4	10.4	22.9	40.4	13/16	7/8
MCF 8 - 6N	1/2	12.7	3/8	10.4	22.9	41.9	7/8	7/8
MCF 8 - 8N	1/2	12.7	1/2	10.4	22.9	46.7	1-1/16	7/8
MCF 8 - 12N	1/2	12.7	3/4	10.4	22.9	48.3	1-5/16	7/8
MCF 10 - 6N	5/8	15.9	3/8	12.7	24.4	41.9	15/16	1
MCF 10 - 8N	5/8	15.9	1/2	12.7	24.4	46.7	1-1/16	1
MCF 10 - 12N	5/8	15.9	3/4	12.7	24.4	48.3	1-5/16	1
MCF 12 - 8N	3/4	19.1	1/2	15.7	24.4	46.7	1-1/16	1-1/8
MCF 12 - 12N	3/4	19.1	3/4	15.7	24.4	48.3	1-5/16	1-1/8
MCF 14 - 12N	7/8	22.2	3/4	18.3	25.9	49.8	1-5/16	1-1/4
MCF 16 - 12N	1	25.4	3/4	22.4	31.2	53.3	1-3/8	1-1/2
MCF 16 - 16N	1	25.4	1	22.4	31.2	62.2	1-5/8	1-1/2
MCF 20 - 20N	1-1/4	31.8	1-1/4	27.7	41.1	74.7	2-1/8	1-7/8
MCF 24 - 24N	1-1/2	38.1	1-1/2	34.0	50.0	83.3	2-3/8	2-1/4
MCF 32 - 32N	2	50.8	2	46.0	67.6	101.6	2-7/8	3

Part Number	Tube OD	NPT	Dimensions				
			d	R	L	h	H
MCF 3M - 2N	3	1/8	2.4	12.9	28.7	14	12
MCF 3M - 4N	3	1/4	2.4	12.9	33.5	19	12
MCF 4M - 2N	4	1/4	2.4	13.7	29.7	14	12
MCF 6M - 2N	6	1/8	4.8	15.3	31.3	14	14
MCF 6M - 4N	6	1/4	4.8	15.3	35.8	19	14
MCF 6M - 6N	6	3/8	4.8	15.3	37.6	22	14
MCF 6M - 8N	6	1/2	4.8	15.3	42.5	27	14
MCF 8M - 2N	8	1/8	6.4	16.2	32.1	15	16
MCF 8M - 4N	8	1/4	6.4	16.2	37.0	19	16
MCF 8M - 6N	8	3/8	6.4	16.2	38.5	22	16
MCF 8M - 8N	8	1/2	6.4	16.2	43.3	27	16
MCF 10M - 4N	10	1/4	7.9	17.2	37.8	19	19
MCF 10M - 6N	10	3/8	7.9	17.2	39.4	22	19
MCF 10M - 8N	10	1/2	7.9	17.2	44.2	27	19
MCF 12M - 4N	12	1/4	9.5	22.8	40.3	22	22
MCF 12M - 6N	12	3/8	9.5	22.8	41.9	22	22
MCF 12M - 8N	12	1/2	9.5	22.8	46.7	27	22
MCF 15M - 8N	15	1/2	11.9	24.4	46.7	27	25
MCF 16M - 8N	16	1/2	12.7	24.4	46.9	27	25
MCF 20M - 8N	20	1/2	15.9	26.0	27.9	30	32
MCF 20M - 12N	20	3/4	15.9	26.0	49.7	35	32
MCF 22M - 12N	22	3/4	18.3	26.0	49.7	35	32
MCF 22M - 16N	22	1	18.3	26.0	57.9	41	32
MCF 25M - 12N	25	3/4	21.8	31.3	53.4	35	38
MCF 25M - 16N	25	1	21.8	31.3	62.3	41	38

MCF-R (PT Thread)

Female Connector

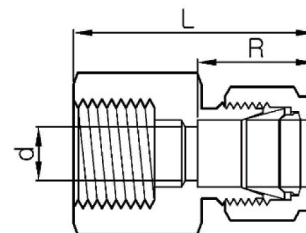
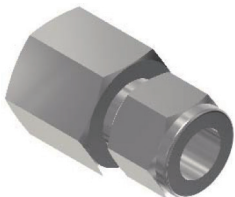


Part Number	Tube OD		PT	Dimensions				
	inch	mm		d	R	L	h	H
MCF 2- 2R	1/8	3.2	1/8	2.3	12.7	28.7	9/16	7/16
MCF 4- 2R	1/4	6.4	1/8	4.8	15.2	31.2	9/16	9/16
MCF 4- 4R	1/4	6.4	1/4	4.8	15.2	35.8	3/4	9/16
MCF 4- 6R	1/4	6.4	3/8	4.8	15.2	37.6	7/8	9/16
MCF 4- 8R	1/4	6.4	1/2	4.8	15.2	42.4	1-1/16	9/16
MCF 6- 4R	3/8	9.5	1/4	4.8	15.2	37.6	3/4	11/16
MCF 6- 6R	3/8	9.5	3/8	7.1	16.8	39.1	7/8	11/16
MCF 6- 8R	3/8	9.5	1/2	7.1	16.8	43.9	1-1/16	11/16
MCF 8- 4R	1/2	12.7	1/4	7.1	16.8	40.4	13/16	7/8
MCF 8- 6R	1/2	12.7	3/8	10.4	22.9	41.9	7/8	7/8
MCF 8- 8R	1/2	12.7	1/2	10.4	22.9	46.7	1-1/16	7/8
MCF 12-12R	3/4	19.1	3/4	15.7	24.4	48.3	1-5/16	1-1/8
MCF 16-16R	1	25.4	1	22.4	31.2	62.2	1-5/8	1-1/2

Part Number	Tube OD	PT	Dimensions				
			d	R	L	h	H
MCF 3M- 2R	3	1/8	2.4	12.9	28.7	14	12
MCF 6M- 2R	6	1/8	4.8	15.3	31.3	14	14
MCF 6M- 4R	6	1/4	4.8	15.3	35.8	19	14
MCF 6M- 6R	6	3/8	4.8	15.3	37.6	22	14
MCF 6M- 8R	6	1/2	4.8	15.3	42.5	27	14
MCF 8M- 2R	8	1/8	6.4	16.2	32.1	15	16
MCF 8M- 4R	8	1/4	6.4	16.2	37.0	19	16
MCF 8M- 6R	8	3/8	6.4	16.2	38.5	22	16
MCF 8M- 8R	8	1/2	6.4	16.2	43.3	27	16
MCF 10M- 2R	10	1/8	7.9	17.2	33.0	18	19
MCF 10M- 4R	10	1/4	7.9	17.2	37.8	19	19
MCF 10M- 6R	10	3/8	7.9	17.2	39.4	22	19
MCF 10M- 8R	10	1/2	7.9	17.2	44.2	27	19
MCF 12M- 2R	12	1/8	8.3	22.8	35.5	22	22
MCF 12M- 4R	12	1/4	9.5	22.8	40.3	22	22
MCF 12M- 6R	12	3/8	9.5	22.8	41.9	22	22
MCF 12M- 8R	12	1/2	9.5	22.8	46.7	27	22
MCF 12M-12R	12	3/4	9.5	22.8	49.0	35	22
MCF 15M- 6R	15	3/8	11.9	24.4	41.9	24	25
MCF 15M- 8R	15	1/2	11.9	24.4	46.7	27	25
MCF 20M- 8R	20	1/2	15.9	26.0	47.9	30	32
MCF 20M-12R	20	3/4	15.9	26.0	49.7	35	32
MCF 22M-12R	22	3/4	18.3	26.0	49.7	35	32
MCF 22M-16R	22	1	18.3	26.0	57.9	41	32
MCF 25M-12R	25	3/4	21.8	31.3	53.4	35	38
MCF 25M-16R	25	1	21.8	31.3	62.3	41	38

MCF-GG

Gauge Connector

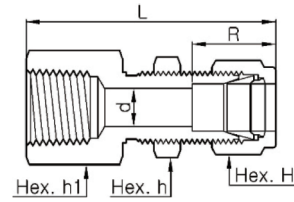
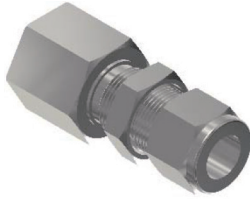


PartNumber	TubeOD		PF	Dimensions				
	inch	mm		d	R	L	h	H
MCF 2-4GG	1/8	3.2	1/4	2.3	15.0	35.3	3/4	9/16
MCF 4-2GG	1/4	6.4	1/8	4.6	15.2	32.0	9/16	9/16
MCF 4-4GG	1/4	6.4	1/4	4.8	15.2	37.6	3/4	9/16
MCF 4-6GG	1/4	6.4	3/8	4.8	15.2	37.6	15/16	9/16
MCF 4-8GG	1/4	6.4	1/2	4.8	15.2	43.4	1-1/16	9/16
MCF 5-4GG	5/16	7.9	1/4	5.6	16.3	38.4	3/4	5/8
MCF 5-8GG	5/16	7.9	1/4	7.1	16.3	40.9	1-1/16	5/8
MCF 6-4GG	3/8	9.5	1/4	5.6	16.8	39.1	3/4	11/16
MCF 6-6GG	3/8	9.5	3/8	6.6	16.8	38.6	15/16	11/16
MCF 6-8GG	3/8	9.5	1/2	7.1	16.8	41.9	1-1/16	11/16
MCF 8-6GG	1/2	12.7	3/8	6.6	22.9	44.5	15/16	7/8
MCF 8-8GG	1/2	12.7	1/2	7.1	22.9	48.3	1-1/16	7/8

PartNumber	Tube OD	PF	Dimensions				
			d	R	L	h	H
MCF 3M-4GG	3	1/4	2.4	12.9	35.3	19	12
MCF 6M-2GG	6	1/8	4.5	15.3	32.0	14	14
MCF 6M-4GG	6	1/4	4.8	15.3	37.6	19	14
MCF 6M-6GG	6	3/8	4.8	15.3	37.6	24	14
MCF 6M-8GG	6	1/2	4.8	15.3	43.5	27	14
MCF 8M-4GG	8	1/4	5.5	16.2	38.5	19	16
MCF 8M-6GG	8	3/8	6.5	16.2	36.2	24	16
MCF 8M-8GG	8	1/2	7.0	16.2	41.0	18	16
MCF 10M-4GG	10	1/4	5.5	17.2	39.4	19	19
MCF 10M-6GG	10	3/8	6.5	17.2	38.8	24	19
MCF 10M-8GG	10	1/2	7.0	17.2	42.1	27	19
MCF 12M-4GG	12	1/4	5.5	22.8	41.9	22	22
MCF 12M-6GG	12	3/8	6.5	22.8	44.4	24	22
MCF 12M-8GG	12	1/4	7.0	22.8	48.2	27	22
MCF 20M-8GG	20	1/4	7.0	26.0	54.3	30	32
MCF 22M-8GG	22	1/4	7.0	26.0	54.3	30	32

MCBF

Bulkhead Female Connector

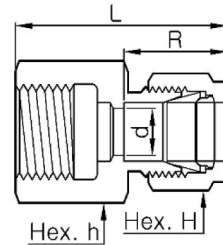
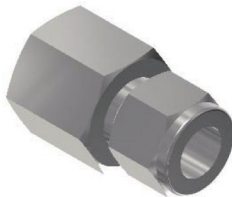


Part Number	Tube OD		NPT	Dimensions						Panel	
	inch	mm		d	R	L	h	h1	H	Hole	Thick.
MCBF 2- 2N	1/8	3.2	1/8	2.3	12.7	44.7	9/16	1/2	7/16	8.3	12.7
MCBF 4- 2N	1/4	6.4	1/8	4.8	15.2	47.0	5/8	5/8	9/16	11.5	10.2
MCBF 4- 4N	1/4	6.4	1/4	4.8	15.2	51.8	3/4	5/8	9/16	11.5	10.2
MCBF 6- 4N	3/8	9.5	1/4	7.1	16.8	55.1	3/4	3/4	11/16	14.7	11.2
MCBF 6- 6N	3/8	9.5	3/8	7.1	16.8	56.9	15/16	3/4	11/16	9.5	11.2
MCBF 8- 6N	1/2	12.7	3/8	10.4	22.9	61.7	15/16	15/16	7/8	19.4	12.7
MCBF 8- 8N	1/2	12.7	1/2	10.4	22.9	66.5	1-1/16	15/16	7/8	19.4	12.7
MCBF 12-12N	3/4	19.1	3/4	7.1	22.9	48.3	1-1/4	1-3/16	1-1/8	19.1	16.8

Part Number	Tube OD		NPT	Dimensions						Panel	
	inch	mm		d	R	L	h	h1	H	Hole	Thick.
MCBF 6M-4N	3	1/4	1/4	4.8	15.3	51.8	19	5/8	14	11.5	10.2
MCBF 8M-4N	6	1/4	1/4	6.4	16.2	53.9	19	11/16	16	13.1	11.2
MCBF 12M-8N	6	1/2	1/2	9.5	22.8	66.5	27	15/16	22	19.5	12.7

MCF-GY

Female Connector (DIN 3852 Form Y)

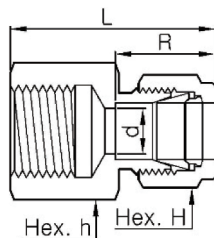
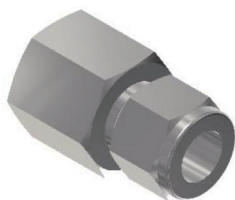


Part Number	Tube OD		PF	Dimensions				
	inch	mm		d	R	L	h	H
MCF2- 4 GY	1/8	3.2	1/4	2.3	12.7	30.2	9/16	7/16
MCF4- 4 GY	1/4	6.4	1/4	4.6	15.2	37.6	3/4	9/16
MCF4- 6 GY	1/4	6.4	3/8	4.8	15.2	37.6	15/16	9/16
MCF4- 8 GY	1/4	6.4	1/2	4.8	15.2	43.4	1-1/16	9/16
MCF5- 4 GY	5/16	7.9	1/4	5.6	16.3	38.4	3/4	5/8
MCF5- 8 GY	5/16	7.9	1/2	7.1	16.3	40.9	1-1/16	5/8
MCF6- 4 GY	3/8	9.5	1/4	5.6	16.8	39.1	3/4	11/16
MCF6- 6 GY	3/8	9.5	3/8	6.6	16.8	38.6	15/16	11/16
MCF6- 8 GY	3/8	9.5	1/2	7.1	16.8	41.9	1-1/16	11/16
MCF8- 4 GY	1/2	12.7	1/4	5.6	22.9	41.9	13/16	7/8
MCF8- 6 GY	1/2	12.7	3/8	6.6	22.9	44.5	15/16	7/8
MCF8- 8 GY	1/2	12.7	1/2	7.1	22.9	48.3	1-1/16	7/8

Part Number	Tube OD		PF	Dimensions				
	inch	mm		d	R	L	h	H
MCF 6M- 4 GY	4	1/4	1/4	4.8	15.3	37.6	19	14
MCF 6M- 6 GY	6	3/8	3/8	4.8	15.3	37.6	24	14
MCF 6M- 8 GY	6	1/2	1/2	4.8	15.3	43.5	27	14
MCF 8M- 4 GY	8	1/4	1/4	5.5	16.2	38.5	19	16
MCF 8M- 6 GY	8	3/8	3/8	6.5	16.2	36.2	24	16
MCF 8M- 8 GY	8	1/2	1/2	7.0	16.2	41.0	27	16
MCF 10M- 4 GY	8	1/4	1/4	5.5	17.2	39.4	19	19
MCF 10M- 6 GY	10	3/8	3/8	6.5	17.2	38.8	24	19
MCF 10M- 8 GY	10	1/2	1/2	7.0	17.2	42.1	27	19
MCF 12M- 4 GY	12	1/4	1/4	5.5	22.8	41.9	22	22
MCF 12M- 6 GY	12	3/8	3/8	6.5	22.8	44.0	24	22
MCF 12M- 8 GY	15	1/2	1/2	7.0	22.8	48.2	27	22

MCF-GZ

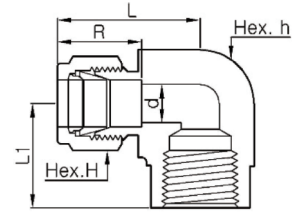
Female Connector (DIN 3852 Form Z)



*It can be supplied by PT thread upon request.

MLF

Female Elbow

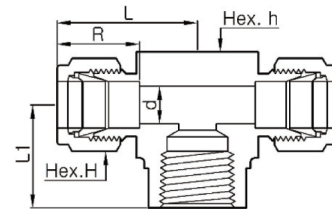


Part Number	Tube OD		NPT	Dimensions						
	inch	mm		d	R	L	L1	h	H	
MLF 2- 2N	1/8	3.2	1/8	2.3	12.7	24.6	19.1	1/2	7/16	
MLF 2- 4N	1/8	3.2	1/4	2.3	12.7	27.4	22.4	11/16	7/16	
MLF 3- 2N	3/16	4.8	1/8	3.0	13.7	25.4	19.1	1/2	1/2	
MLF 4- 2N	1/4	6.4	1/8	4.8	15.2	26.9	19.1	1/2	9/16	
MLF 4- 4N	1/4	6.4	1/4	4.8	15.2	29.7	22.4	11/16	9/16	
MLF 4- 6N	1/4	6.4	3/8	4.8	15.2	31.8	22.4	13/16	9/16	
MLF 4- 8N	1/4	6.4	1/2	4.8	15.2	34.5	28.4	1	9/16	
MLF 5- 2N	5/16	7.9	1/8	6.4	16.3	28.7	19.1	9/16	5/8	
MLF 5- 4N	5/16	7.9	1/4	6.4	16.3	30.5	22.4	11/16	5/8	
MLF 6- 2N	3/8	9.5	1/8	7.1	16.8	30.5	19.1	5/8	11/16	
MLF 6- 4N	3/8	9.5	1/4	7.1	16.8	31.3	22.4	11/16	11/16	
MLF 6- 6N	3/8	9.5	3/8	7.1	16.8	33.3	22.4	13/16	11/16	
MLF 6- 8N	3/8	9.5	1/2	7.1	16.8	36.1	28.4	1	11/16	
MLF 8- 4N	1/2	12.7	1/4	10.4	22.9	36.1	22.4	13/16	7/8	
MLF 8- 6N	1/2	12.7	3/8	10.4	22.9	36.1	22.4	13/16	7/8	
MLF 8- 8N	1/2	12.7	1/2	10.4	22.9	38.9	28.4	1	7/8	
MLF 10- 6N	5/8	15.9	3/8	12.7	24.4	38.1	22.4	15/16	1	
MLF 10- 8N	5/8	15.9	1/2	12.7	24.4	39.9	28.4	1-1/16	1	
MLF 12- 8N	3/4	19.1	1/2	15.7	24.4	39.9	28.4	1-1/16	1-1/8	
MLF 12-12N	3/4	19.1	3/4	15.7	24.4	44.7	31.8	1-3/8	1-1/8	
MLF 14-12N	7/8	22.2	3/4	18.3	25.9	44.7	31.8	1-3/8	1-1/4	
MLF 16-12N	1	25.4	3/4	22.4	31.2	49.0	31.8	1-3/8	1-1/2	
MLF 16-16N	1	25.4	1	22.4	31.2	53.6	38.1	1-11/16	1-1/2	

Part Number	Tube OD	NPT	Dimensions						
			d	R	L	L1	h	H	
MLF 6M- 2N	6	1/8	4.8	15.3	27.0	19.0	1/2	14	
MLF 6M- 4N	6	1/4	4.8	15.3	29.8	22.4	11/16	14	
MLF 6M- 8N	6	1/2	4.8	15.3	34.6	28.4	1	14	
MLF 8M- 4N	8	1/4	6.4	16.2	30.6	22.4	11/16	16	
MLF 10M- 2N	10	1/8	7.9	17.2	31.5	19.0	11/16	19	
MLF 10M- 4N	10	1/4	7.9	17.2	33.5	22.4	13/16	19	
MLF 12M- 4N	12	1/4	9.5	22.8	36.0	22.4	13/16	22	
MLF 12M- 8N	12	1/2	9.5	22.8	38.8	28.4	1	22	
MLF 16M- 8N	16	1/2	12.7	24.4	39.5	28.4	1-1/16	25	

MTBF

Female Branch Tee

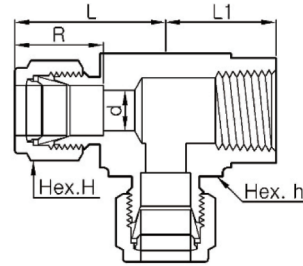


Part Number	Tube OD		NPT	Dimensions						
	inch	mm		d	R	L	L1	h	H	
MTBF 2- 2N	1/8	3.2	1/8	2.3	12.7	24.6	19.1	1/2	7/16	
MTBF 4- 2N	1/4	6.4	1/8	4.8	15.2	26.9	19.1	1/2	9/16	
MTBF 4- 4N	1/4	6.4	1/4	4.8	15.2	29.7	22.4	11/16	9/16	
MTBF 6- 4N	3/8	9.5	1/4	7.1	16.8	31.2	22.4	11/16	11/16	
MTBF 6- 6N	3/8	9.5	3/8	7.1	16.8	33.3	22.4	13/16	11/16	
MTBF 6- 8N	3/8	9.5	1/2	7.1	16.8	36.1	28.4	1	11/16	
MTBF 8- 4N	1/2	12.7	1/4	10.4	22.9	36.1	22.4	13/16	7/8	
MTBF 8- 6N	1/2	12.7	3/8	10.4	22.9	36.1	22.4	13/16	7/8	
MTBF 8- 8N	1/2	12.7	1/2	10.4	22.9	38.9	28.4	1	7/8	
MTBF 10- 8N	5/8	15.9	1/2	12.7	24.4	38.9	28.4	1	1	
MTBF 12-12N	3/4	19.1	3/4	15.7	24.4	44.7	31.8	1-3/8	1-1/8	
MTBF 16-12N	1	25.4	3/4	22.4	31.2	49.0	31.8	1-3/8	1-1/2	
MTBF 16-16N	1	25.4	1	22.4	31.2	53.6	38.1	1-11/16	1-1/2	

Part Number	Tube OD	NPT	Dimensions						
			d	R	L	L1	h	H	
MTBF 6M- 2N	6	1/8	4.8	15.3	27.0	19.0	1/2	14	
MTBF 6M- 4N	6	1/4	4.8	15.3	29.8	22.4	11/16	14	
MTBF 8M- 2N	8	1/8	6.4	16.2	29.9	19.0	5/8	16	
MTBF 8M- 4N	8	1/4	6.4	16.2	30.6	22.4	11/16	16	
MTBF 10M- 4N	10	1/4	7.9	17.2	33.5	22.4	13/16	19	
MTBF 12M- 4N	12	1/4	9.5	22.8	36.0	22.4	13/16	22	
MTBF 12M- 6N	12	3/8	9.5	22.8	36.0	22.4	13/16	22	
MTBF 12M- 8N	12	1/2	9.5	22.8	38.9	28.4	1	22	
MTBF 16M- 8N	16	1/2	12.7	24.4	38.8	28.4	1	25	

MTRF

Female Run Tee



Part Number	Tube OD		NPT	Dimensions					
	inch	mm		d	R	L	L1	h	H
MTRF 2 - 2N	1/8	3.2	1/8	2.3	12.7	24.6	19.1	1/2	7/16
MTRF 4 - 2N	1/4	6.4	1/8	4.8	15.2	26.9	19.1	1/2	9/16
MTRF 4 - 4N	1/4	6.4	1/4	4.8	15.2	29.7	22.4	11/16	9/16
MTRF 6 - 4N	3/8	9.5	1/4	7.1	16.8	31.2	22.4	11/16	11/16
MTRF 8 - 6N	1/2	12.7	3/8	10.4	22.9	36.1	22.4	13/16	7/8
MTRF 8 - 8N	1/2	12.7	1/2	10.4	22.9	39.9	28.4	1	7/8
MTRF12-12N	3/4	19.1	3/4	15.7	24.4	44.7	31.8	13/8	1-1/8
MTRF16-12N	1	25.4	3/4	22.4	31.2	49.0	31.8	13/8	1-1/2
MTRF16-16N	1	25.4	1	22.4	31.2	53.6	38.1	1-11/16	1-1/2

Part Number	Tube OD	NPT	Dimensions					
			d	R	L	L1	h	H
MTRF 6M - 2N	6	1/8	4.8	15.3	27.0	19.1	1/2	14
MTRF 6M - 4N	6	1/4	4.8	15.3	29.8	22.4	11/16	14
MTRF 8M - 2N	8	1/8	6.4	16.2	29.9	19.1	5/8	16
MTRF 8M - 4N	8	1/4	6.4	16.2	30.6	22.4	11/16	16
MTRF10M-4N	10	1/4	7.9	17.2	33.5	22.4	13/16	19
MTRF12M-4N	12	1/4	9.5	22.8	36.0	22.4	13/16	22
MTRF12M-6N	12	3/8	10.3	22.8	36.0	22.4	13/16	22
MTRF12M-8N	12	1/2	9.5	22.8	39.8	28.5	11/16	22
MTRF16M-8N	16	1/2	12.7	24.4	39.8	28.4	11/16	25