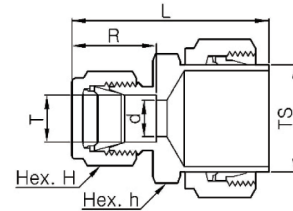
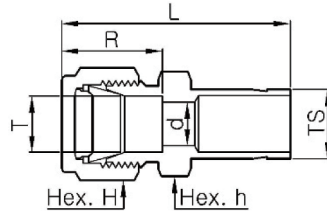


Adapter

MR

Reducer

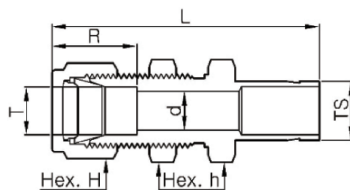


Part Number	Tube OD		Dimensions				
	T	TS	d	R	L	h	H
MR 1- 2	1/16	1/8	1.3	8.6	29.2	5/16	5/16
MR 1- 4	1/16	1/4	1.3	8.6	31.5	5/16	5/16
MR 2- 1	1/8	1/16	0.8	12.7	29.0	7/16	7/16
MR 2- 2	1/8	1/8	2.0	12.7	33.5	7/16	7/16
MR 2- 3	1/8	3/16	2.3	12.7	34.3	7/16	7/16
MR 2- 4	1/8	1/4	2.3	12.7	36.1	7/16	7/16
MR 2- 6	1/8	3/8	2.3	12.7	37.6	7/16	7/16
MR 2- 8	1/8	1/2	2.3	12.7	44.2	9/16	7/16
MR 3- 2	3/16	1/8	2.0	13.7	34.8	7/16	1/2
MR 3- 4	3/16	1/4	3.0	13.7	37.1	7/16	1/2
MR 4- 2	1/4	1/8	2.0	15.2	36.8	1/2	9/16
MR 4- 3	1/4	3/16	3.0	15.2	37.6	1/2	9/16
MR 4- 4	1/4	1/4	4.3	15.2	39.1	1/2	9/16
MR 4- 5	1/4	5/16	4.8	15.2	39.9	1/2	9/16
MR 4- 6	1/4	3/8	4.8	15.2	40.6	1/2	9/16
MR 4- 8	1/4	1/2	4.8	15.2	46.2	9/16	9/16
MR 4-10	1/4	5/8	4.8	15.2	48.0	11/16	9/16
MR 4-12	1/4	3/4	4.8	15.2	47.8	13/16	9/16
MR 5- 6	5/16	3/8	6.4	16.3	41.9	9/16	5/8
MR 5- 8	5/16	1/2	6.4	16.3	47.5	6	5/8
MR 6- 4	3/8	1/4	4.3	16.8	41.4	5/8	11/16
MR 6- 6	3/8	3/8	6.9	16.8	43.2	5/8	11/16
MR 6- 8	3/8	1/2	7.1	16.8	48.5	5/8	11/16
MR 6-10	3/8	5/8	7.1	16.8	50.3	11/16	11/16
MR 6-12	3/8	3/4	7.1	16.8	50.3	13/16	11/16
MR 8- 4	1/2	1/4	4.3	22.9	45.0	13/16	7/8
MR 8- 6	1/2	3/8	6.9	22.9	46.7	13/16	7/8
MR 8- 8	1/2	1/2	9.4	22.9	52.3	13/16	7/8
MR 8-10	1/2	5/8	10.4	22.9	53.8	13/16	7/8
MR 8-12	1/2	3/4	10.4	22.9	53.8	13/16	7/8
MR 8-16	1/2	1	10.4	22.9	60.2	1-1/16	7/8
MR 10-12	5/8	3/4	12.7	24.4	54.6	15/16	1
MR 10-14	5/8	7/8	12.7	24.4	56.1	15/16	1
MR 10-16	5/8	1	12.7	24.4	61.0	1-1/16	1
MR 12- 8	3/4	1/2	9.4	24.4	54.6	1-1/16	1-1/8
MR 12-16	3/4	1	15.7	24.4	62.5	1-1/16	1-1/8
MR 16-20	1	1-1/4	22.4	31.2	80.5	1-3/8	1-1/2
MR 16-24	1	1-1/2	22.4	31.2	89.2	1-5/8	1-1/2
MR 16-32	1	2	22.4	31.2	112.5	2-1/8	1-1/2
MR 20-24	1-1/4	1-1/2	27.7	41.1	104.1	1-3/4	1-7/8
MR 20-32	1-1/4	2	27.7	41.1	125.2	2-1/8	1-7/8

Part Number	Tube OD		Dimensions				
	T	TS	d	R	L	h	H
MR 2M- 3M	2	3	1.7	12.9	33.5	12	12
MR 3M- 4M	3	4	2.4	12.9	35.0	12	12
MR 3M- 6M	3	6	2.4	12.9	36.1	12	12
MR 3M-10M	3	10	2.4	12.9	38.4	14	12
MR 4M- 6M	4	6	2.4	13.7	37.1	12	12
MR 6M- 3M	6	3	1.9	15.3	36.9	14	14
MR 6M- 8M	6	8	4.8	15.3	39.9	14	14
MR 6M-10M	6	10	4.8	15.3	40.7	14	14
MR 6M-12M	6	12	4.8	15.3	46.3	14	14
MR 6M-18M	6	18	4.8	15.3	49.6	22	14
MR 8M- 6M	8	6	4.1	16.2	40.3	15	16
MR 8M-10M	8	10	6.4	16.2	42.0	15	16
MR 8M-12M	8	12	6.4	16.2	47.6	15	16
MR 10M- 6M	10	6	4.1	17.2	42.4	18	19
MR 10M- 8M	10	8	5.6	17.2	43.4	18	19
MR 10M-12M	10	12	7.9	17.2	49.8	18	19
MR 10M-15M	10	15	7.9	17.2	51.3	18	19
MR 10M-18M	10	18	7.9	17.2	51.3	22	19
MR 12M- 6M	12	6	4.1	22.8	44.9	22	22
MR 12M- 8M	12	8	5.6	22.8	45.9	22	22
MR 12M-10M	12	10	7.1	22.8	46.7	22	22
MR 12M-16M	12	16	9.5	22.8	53.8	22	22
MR 12M-18M	12	18	9.5	22.8	53.8	22	22
MR 12M-20M	12	20	9.5	22.8	56.1	22	22
MR 12M-22M	12	22	9.5	22.8	56.1	24	22
MR 12M-25M	12	25	9.5	22.8	62.4	27	22
MR 16M-12M	16	12	8.8	24.4	53.0	24	25
MR 18M-12M	18	12	8.8	24.4	54.6	27	30
MR 18M-16M	18	16	12.0	24.4	56.1	27	30
MR 18M-20M	18	20	15.1	24.4	57.6	27	30
MR 18M-22M	18	22	15.1	24.4	57.6	27	30
MR 18M-25M	18	25	15.1	24.4	62.4	27	30
MR 20M-16M	20	16	12.0	26.0	57.9	30	32
MR 20M-18M	20	18	13.9	26.0	57.9	30	32
MR 20M-22M	20	22	15.9	26.0	59.4	30	32
MR 20M-25M	20	25	15.9	26.0	64.2	30	32
MR 22M-18M	22	18	13.9	26.0	57.9	30	32
MR 22M-20M	22	20	15.5	26.0	59.4	30	32
MR 22M-25M	22	25	18.3	26.0	64.2	30	32
MR 25M-18M	25	18	13.9	31.3	63.1	35	38
MR 25M-20M	25	20	15.5	31.3	64.6	35	38

MAB

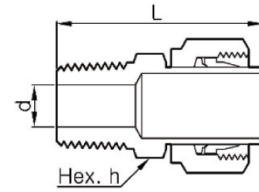
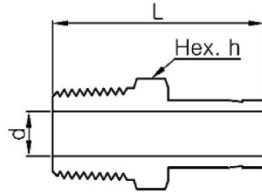
Bulkhead Reducer



Part Number	Tube OD		Dimensions					Panel	
	T	TS	d	R	L	h	H	Hole	Thick.
MAB 2- 2	1/8	1/8	2.0	12.7	49.5	1/2	7/16	8.3	12.7
MAB 4- 4	1/4	1/4	4.3	15.2	55.9	5/8	9/16	11.5	10.2
MAB 6- 6	3/8	3/8	6.9	16.8	61.2	3/4	11/16	14.7	11.2
MAB 8- 8	1/2	1/2	9.4	22.9	72.9	15/16	7/8	19.4	12.7
MAB 10-10	5/8	5/8	11.9	24.4	75.2	1-1/16	1	22.6	12.7
MAB 12-12	3/4	3/4	14.7	24.4	81.5	13/16	1-1/8	25.8	16.8
MAB 16-16	1	1	20.3	31.2	100.3	1-5/8	1-1/2	33.7	19.1

MAM-N

Male Adapter, NPT Thread

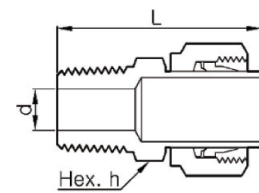
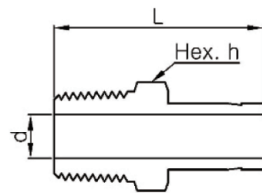


Part Number	Tube OD		NPT	Dimensions		
	inch	mm		d	L	h
MAM 2 - 2N	1/8	3.2	1/8	2.0	29.5	7/16
MAM 2 - 4N	1/8	3.2	1/4	2.0	34.8	9/16
MAM 3 - 2N	3/16	4.8	1/8	3.0	30.2	7/16
MAM 3 - 4N	3/16	4.8	1/4	3.0	35.6	9/16
MAM 4 - 2N	1/4	6.4	1/8	4.3	31.8	7/16
MAM 4 - 4N	1/4	6.4	1/4	4.3	37.1	9/16
MAM 4 - 6N	1/4	6.4	3/8	4.3	37.8	11/16
MAM 4 - 8N	1/4	6.4	1/2	4.3	43.4	7/8
MAM 5 - 2N	5/16	7.9	1/8	4.8	32.8	7/16
MAM 5 - 4N	5/16	7.9	1/4	5.6	38.1	9/16
MAM 6 - 2N	3/8	9.5	1/8	4.8	33.5	7/16
MAM 6 - 4N	3/8	9.5	1/4	6.9	38.9	9/16
MAM 6 - 6N	3/8	9.5	3/8	6.9	39.6	11/16
MAM 6 - 8N	3/8	9.5	1/2	6.9	45.2	7/8
MAM 8 - 4N	1/2	12.7	1/4	7.1	44.5	9/16
MAM 8 - 6N	1/2	12.7	3/8	9.4	45.2	11/16
MAM 8 - 8N	1/2	12.7	1/2	9.4	50.8	7/8
MAM 10 - 8N	5/8	15.9	1/2	11.9	52.3	7/8
MAM 12 - 8N	3/4	19.1	1/2	11.9	52.3	7/8
MAM 12 - 12N	3/4	19.1	3/4	14.7	52.3	1-1/16
MAM 16 - 12N	1	25.4	3/4	15.7	58.7	1-1/16
MAM 16 - 16N	1	25.4	1	20.3	66.0	1-3/8
MAM 20 - 20N	1-1/4	31.8	1-1/4	25.9	80.3	1-3/4
MAM 24 - 24N	1-1/2	38.1	1-1/2	31.8	94.5	2-1/8
MAM 32 - 32N	2	50.8	2	43.7	119.4	2-3/4

Part Number	Tube OD	NPT	Dimensions		
			d	L	h
MAM 6M - 2N	6	1/8	4.1	32.8	12
MAM 6M - 4N	6	1/4	4.1	38.1	14
MAM 8M - 2N	8	1/8	5.6	39.1	14
MAM 8M - 6N	8	3/8	5.6	39.9	19
MAM 10M - 4N	10	1/4	7.1	39.9	14
MAM 10M - 6N	10	3/8	7.1	40.6	18
MAM 10M - 8N	10	1/2	7.1	46.2	22
MAM 12M - 4N	12	1/4	7.1	46.5	16
MAM 12M - 8N	12	1/2	8.8	52.1	22
MAM 28M - 16N	28	1	22.2	74.7	35
MAM 28M - 20N	28	1-1/4	22.5	76.2	46
MAM 30M - 16N	30	1	22.2	79.2	41
MAM 30M - 20N	30	1-1/4	24.3	80.0	46
MAM 32M - 20N	32	1-1/4	26.5	81.0	46
MAM 38M - 24N	38	1-1/2	31.6	92.2	55

MAM-R

Male Adapter, PT Thread

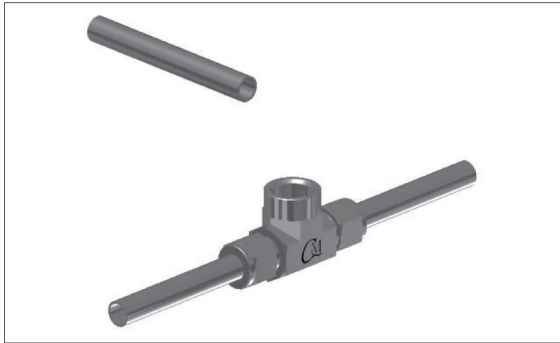


Part Number	Tube OD		PT	Dimensions		
	inch	mm		d	L	h
MAM 2 - 2R	1/8	3.2	1/8	2.0	29.5	7/16
MAM 2 - 4R	1/8	3.2	1/4	2.0	34.8	9/16
MAM 4 - 2R	1/4	6.4	1/8	4.3	31.8	7/16
MAM 4 - 4R	1/4	6.4	1/4	4.3	37.1	9/16
MAM 6 - 4R	3/8	9.5	1/4	6.9	38.9	9/16
MAM 6 - 6R	3/8	9.5	3/8	6.9	39.6	11/16
MAM 6 - 8R	3/8	9.5	1/2	6.9	45.2	7/8
MAM 8 - 4R	1/2	12.7	1/4	7.1	44.5	9/16
MAM 8 - 6R	1/2	12.7	3/8	9.4	45.2	11/16
MAM 8 - 8R	1/2	12.7	1/2	9.4	50.8	7/8
MAM 12 - 12R	3/4	19.1	3/4	14.7	52.3	1-1/16
MAM 16 - 16R	1	25.4	1	20.3	66.0	1-3/8

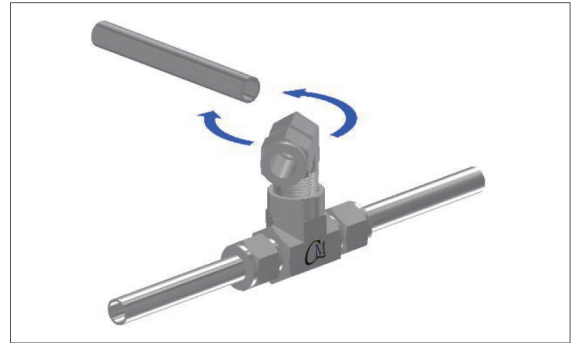
Part Number	Tube OD	PT	Dimensions		
			d	L	h
MAM 6M - 2R	6	1/8	4.1	32.8	12
MAM 6M - 4R	6	1/4	4.1	38.1	14
MAM 8M - 4R	8	1/4	5.6	39.1	14
MAM 10M - 4R	10	1/4	7.1	39.9	14
MAM 10M - 6R	10	3/8	7.1	40.6	18
MAM 12M - 4R	12	1/4	7.1	46.5	16
MAM 12M - 6R	12	3/8	8.8	46.2	18
MAM 12M - 8R	12	1/2	8.8	51.8	22
MAM 28M - 16R	28	1	22.2	74.7	35
MAM 28M - 20R	28	1-1/4	22.5	76.2	46
MAM 30M - 20R	30	1-1/4	24.3	80.0	46
MAM 32M - 20R	32	1-1/4	26.5	81.0	46
MAM 38M - 24R	38	1-1/2	31.6	92.2	55

Solving alignment problems and managing inventory efficiently

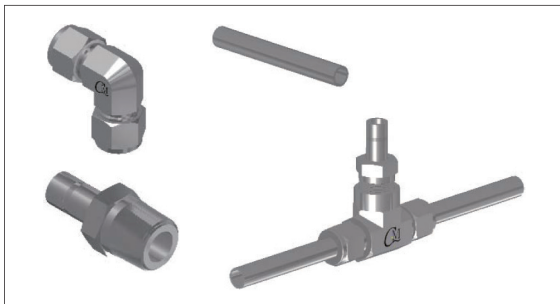
M-Lok tube fitting adapters are the solution to right angle alignment problems and streamline inventory operations. Please refer to the following for troubleshooting common alignment issues.



The lower part has a female threaded port and requires piping in the 90 degree direction.



When connecting to the female threaded port using the male elbow, it is not easy to match the M-Lok port of the male elbow with the tubing in the 90 degree direction. If you tighten or loosen the pipe thread to match the M-Lok port to the 90 degree tubing, leaks will occur.



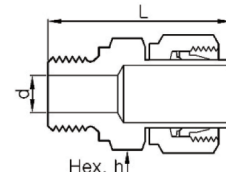
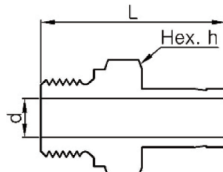
It can be solved by using male adapter and union elbow instead of male elbow. First, connect the male adapter to the lower female threaded port.



Insert the union elbow into the stub of the male adapter and turn it in the desired direction to connect with the tubing and install it.

MAM-G

Bonded Gasket Male Adapter

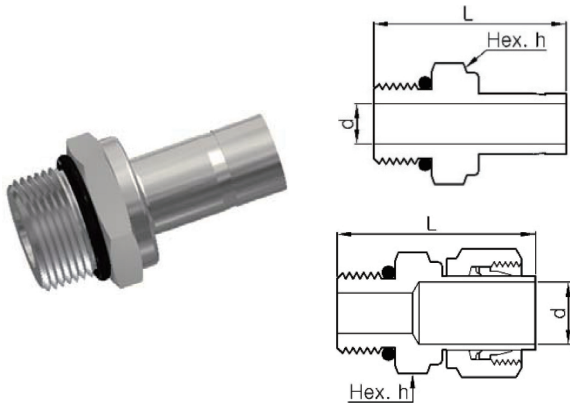


Part Number	Tube OD		PF	Dimensions		
	inch	mm		d	L	h
MAM 2 - 2G	1/8	3.2	1/8	2.0	29.5	7/16
MAM 2 - 4G	1/8	3.2	1/4	2.0	34.8	9/16
MAM 4 - 2G	1/4	6.4	1/8	4.3	31.8	7/16
MAM 4 - 4G	1/4	6.4	1/4	4.3	37.1	9/16
MAM 6 - 4G	3/8	9.5	1/4	6.9	38.9	9/16
MAM 6 - 6G	3/8	9.5	3/8	6.9	39.6	11/16
MAM 8 - 4G	1/2	12.7	1/4	7.1	44.5	9/16
MAM 8 - 6G	1/2	12.7	3/8	9.4	45.2	11/16
MAM 8 - 8G	1/2	12.7	1/2	9.4	50.8	7/8
MAM 12 - 12G	3/4	19.1	3/4	14.7	52.3	1-1/16
MAM 16 - 16G	1	25.4	1	20.3	66.0	1-3/8

Part Number	Tube OD	PF	Dimensions		
			d	L	h
MAM 6M - 2G	6	1/8	4.1	32.8	12
MAM 6M - 4G	6	1/4	4.1	38.1	14
MAM 8M - 4G	8	1/4	5.6	39.1	14
MAM 10M - 4G	10	1/4	7.1	39.9	14
MAM 10M - 6G	10	3/8	7.1	40.6	18
MAM 10M - 8G	10	1/2	7.1	46.2	22
MAM 12M - 4G	12	1/4	7.1	46.5	16
MAM 12M - 6G	12	3/8	7.1	46.5	16
MAM 12M - 8G	12	1/2	8.8	52.1	22
MAM 28M - 16G	28	1	22.2	74.7	35
MAM 28M - 20G	28	1-1/4	22.5	76.2	46
MAM 30M - 20G	30	1-1/4	24.3	80.0	46
MAM 32M - 20G	32	1-1/4	26.5	81.0	46
MAM 38M - 24G	38	1-1/2	31.6	92.2	55

MAM-U

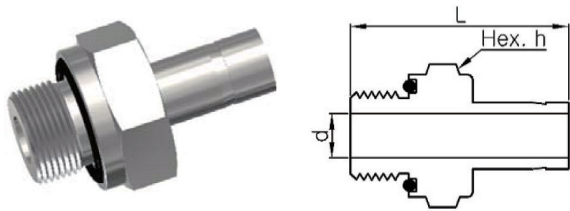
SAE/MS Straight Thread Male Adapter



Part Number	Tube OD		SAE/MS Straight Thread	Dimensions		
	inch	mm		d	L	h
MAM 2 - 2U	1/8	3.2	5/16 - 24	2.0	30.5	7/16
MAM 4 - 4U	1/4	6.4	7/16 - 20	4.3	35.3	9/16
MAM 6 - 4U	3/8	9.5	7/16 - 20	5.1	37.1	9/16
MAM 6 - 6U	3/8	9.5	9/16 - 18	6.9	38.6	11/16
MAM 6 - 8U	3/8	9.5	3/4 - 16	6.9	40.6	7/8
MAM 8 - 6U	1/2	12.7	9/16 - 18	7.1	44.2	11/16
MAM 8 - 8U	1/2	12.7	3/4 - 16	9.4	46.2	7/8
MAM 10 - 10U	5/8	15.9	7/8 - 14	11.9	49.3	1
MAM 12 - 12U	3/4	19.1	11/16 - 12	14.7	53.3	1-1/4
MAM 16 - 16U	1	25.4	15/16 - 12	20.3	61.2	1-1/2
MAM 20 - 20U	1-1/4	31.8	15/8 - 12	25.9	71.4	1-7/8
MAM 24 - 24U	1-1/2	38.1	17/8 - 12	31.8	83.3	2-1/8
MAM 32 - 32U	2	50.8	2 1/2 - 12	43.7	107.4	2-3/4

MAM-UO

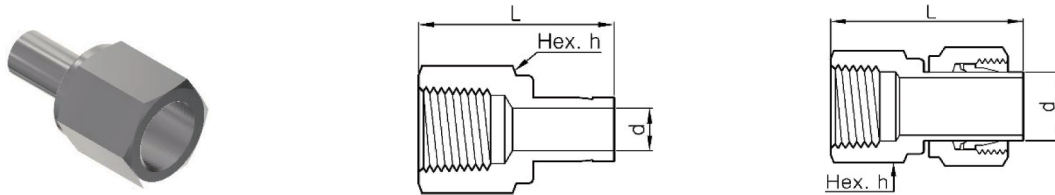
O-Seal SAE/MS Straight Thread Male Adapter



Part Number	Tube OD		SAE/MS Straight Thread	Dimensions		
	inch	mm		d	L	h
MAM2-2UO	1/8	3.2	5/16 - 24	2.0	32.5	9/16
MAM3-3UO	3/16	4.8	3/8 - 24	3.0	35.1	5/8
MAM4-4UO	1/4	6.4	7/16 - 20	4.3	39.1	3/4
MAM5-5UO	5/16	7.9	1/2 - 20	5.6	41.7	7/8
MAM6-6UO	3/8	9.5	9/16 - 18	6.9	43.2	15/16
MAM8-8UO	1/2	12.7	3/4 - 16	9.4	49.5	1-1/8

MAF-N

Female Adapter, NPT Thread



Part Number	Tube OD		NPT	Dimensions		
	inch	mm		d	L	h
MAF 2 - 2N	1/8	3.2	1/8	2.0	31.5	9/16
MAF 2 - 4N	1/8	3.2	1/4	2.0	35.3	3/4
MAF 3 - 4N	3/16	4.8	1/4	3.0	35.8	3/4
MAF 4 - 2N	1/4	6.4	1/8	4.3	33.0	9/16
MAF 4 - 4N	1/4	6.4	1/4	4.3	37.1	3/4
MAF 4 - 6N	1/4	6.4	3/8	4.3	39.4	7/8
MAF 4 - 8N	1/4	6.4	1/2	4.3	45.5	1-1/16
MAF 5 - 4N	5/16	7.9	1/4	5.6	37.6	3/4
MAF 6 - 2N	3/8	9.5	1/8	6.9	34.3	9/16
MAF 6 - 4N	3/8	9.5	1/4	6.9	38.1	3/4
MAF 6 - 6N	3/8	9.5	3/8	6.9	40.4	7/8
MAF 6 - 8N	3/8	9.5	1/2	6.9	46.7	1-1/16
MAF 8 - 4N	1/2	12.7	1/4	9.4	43.4	3/4
MAF 8 - 6N	1/2	12.7	3/8	9.4	45.5	7/8
MAF 8 - 8N	1/2	12.7	1/2	9.4	52.1	1-1/16
MAF 10 - 8N	5/8	15.9	1/2	11.9	53.1	1-1/16
MAF 12 - 8N	3/4	19.1	1/2	14.7	52.8	1-1/16
MAF 12 - 12N	3/4	19.1	3/4	14.7	54.9	1-5/16
MAF 12 - 16N	3/4	19.1	1	14.7	58.4	1-5/8
MAF 16 - 12N	1	25.4	3/4	20.3	60.7	1-5/16
MAF 16 - 16N	1	25.4	1	20.3	64.3	1-5/8
MAF 20 - 20N	1-1/4	31.8	1-1/4	25.9	77.7	2-1/8
MAF 24 - 24N	1-1/2	38.1	1-1/2	31.8	88.9	2-3/8
MAF 32 - 32N	2	50.8	2	43.7	107.4	2-7/8

Part Number	Tube OD	NPT	Dimensions		
			d	L	h
MAF 6M - 2N	6	1/8	4.1	32.5	14
MAF 6M - 4N	6	1/4	4.1	37.1	19
MAF 8M - 4N	8	1/4	5.6	37.6	19
MAF 10M - 4N	10	1/4	7.1	38.1	19
MAF 10M - 6N	10	3/8	7.1	40.1	19
MAF 10M - 8N	10	1/2	7.1	46.7	27
MAF 12M - 4N	12	1/4	8.8	43.7	19
MAF 12M - 8N	12	1/2	8.8	52.3	27

MAF-R

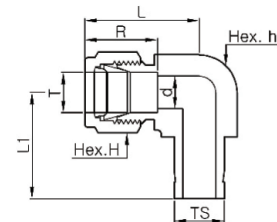
Female Adapter, PT Thread

Part Number	Tube OD		PT	Dimensions		
	inch	mm		d	L	h
MAF 4 - 2R	1/4	6.4	1/8	4.3	33.0	9/16
MAF 4 - 4R	1/4	6.4	1/4	4.3	36.8	3/4
MAF 6 - 4R	3/8	9.5	1/4	6.9	38.1	3/4
MAF 6 - 6R	3/8	9.5	3/8	6.9	40.4	7/8
MAF 8 - 4R	1/2	12.7	1/4	9.4	43.4	3/4
MAF 8 - 6R	1/2	12.7	3/8	9.4	45.7	7/8
MAF 8 - 8R	1/2	12.7	1/2	9.4	52.1	1-1/16

Part Number	Tube OD	PT	Dimensions		
			d	L	h
MAF 6M - 2R	6	1/8	4.1	33.0	14
MAF 8M - 4R	8	1/4	5.6	37.6	19
MAF 10M - 4R	10	1/4	7.1	38.1	19

MLA

Elbow Adapter

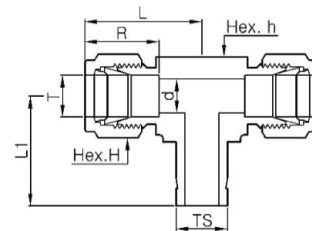


Part Number	Tube OD		Dimensions						
	T	TS	d	R	L	L1	h	H	
MLA 4 - 4	1/4	1/4	4.3	15.2	26.9	25.0	1/2	9/16	
MLA 6 - 4	3/8	1/4	4.3	16.8	30.5	25.0	5/8	11/16	
MLA 6 - 6	3/8	3/8	6.9	16.8	30.5	28.8	5/8	11/16	
MLA 8 - 6	1/2	3/8	6.9	22.9	36.1	28.8	13/16	7/8	
MLA 8 - 8	1/2	1/2	9.4	22.9	36.1	37.3	13/16	7/8	
MLA 12 - 12	3/4	3/4	14.7	24.4	38.8	42.6	1-1/16	1-1/8	
MLA 16 - 16	1	1	20.3	31.2	49.0	55.6	1-3/8	1-1/2	

Part Number	Tube OD		Dimensions				
	T	TS	d	R	L	h	H
MLA 6M - 6M	6	1/8	4.6	15.3	27.0	1/2	14
MLA 8M - 8M	8	1/4	5.6	16.2	28.8	9/16	16
MLA 10M - 10M	10	1/4	7.1	17.2	31.5	11/16	19
MLA 12M - 12M	10	1/4	8.8	22.8	38.1	15/16	22
MLA 20M - 20M	10	1/4	15.5	26.0	42.6	30.0	32.0
MLA 25M - 25M	10	1/4	20.3	31.3	49.1	1-3/8	38
MLA 28M - 28M	10	1/4	22.5	36.6	64.0	41.0	46.0

MTBA

Branch Tee Adapter

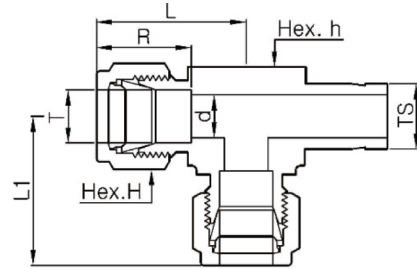


Part Number	Tube OD		Dimensions					
	inch	mm	d	R	L	L1	h	H
MTBA- 1	1/16	1.6	0.8	8.6	22.3	16.0	3/8	5/16
MTBA- 2	1/8	3.2	2.0	12.7	22.3	20.6	3/8	7/16
MTBA- 3	3/16	4.8	3.0	13.7	25.4	22.5	1/2	1/2
MTBA- 4	1/4	6.4	4.3	15.2	27.0	25.0	1/2	9/16
MTBA- 5	5/16	7.9	5.6	16.3	28.8	27.1	9/16	5/8
MTBA- 6	3/8	9.5	6.9	16.8	31.5	28.8	5/8	11/16
MTBA- 8	1/2	12.7	9.4	22.9	36.0	37.3	13/16	7/8
MTBA-10	5/8	15.9	11.9	24.4	38.8	41.8	15/16	1
MTBA-12	3/4	19.1	14.7	24.4	38.8	42.6	11/16	1-1/8
MTBA-14	7/8	22.2	18.3	25.9	39.8	49.4	13/16	1-1/4
MTBA-16	1	25.4	20.3	31.2	49.0	55.6	1-3/8	1-1/2

Part Number	Tube OD	Dimensions					
		d	R	L	L1	h	H
MTBA- 3M	3	1.9	12.9	22.3	20.5	3/8	12
MTBA- 4M	4	2.2	13.7	25.4	23.0	1/2	12
MTBA- 6M	6	4.1	15.3	27.0	25.1	1/2	14
MTBA- 8M	8	5.6	16.2	28.8	27.2	9/16	16
MTBA-10M	10	7.1	17.2	31.5	29.5	11/16	19
MTBA-12M	12	8.8	22.8	36.0	37.6	13/16	22
MTBA-15M	15	11.2	24.4	38.8	41.6	1-1/16	25
MTBA-16M	16	12.0	24.4	38.8	41.8	1-1/16	25
MTBA-18M	18	13.9	24.4	39.9	42.6	1-1/16	30
MTBA-20M	20	15.5	26.0	42.6	67.1	30	32
MTBA-22M	22	16.1	26.0	42.6	47.2	30	32
MTBA-25M	25	19.9	31.3	49.1	55.6	1-3/8	38

MTRA

Run Tee Adapter

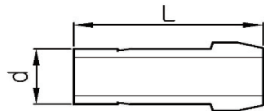


Part Number	Tube OD		Dimensions					
	inch	mm	d	R	L	L1	h	H
MTRA - 1	1/16	1.6	0.8	8.6	22.3	16.0	3/8	5/16
MTRA - 2	1/8	3.2	2.0	12.7	22.3	20.6	3/8	7/16
MTRA - 3	3/16	4.8	3.0	13.7	25.4	22.5	1/2	1/2
MTRA - 4	1/4	6.4	4.3	15.2	27.0	25.0	1/2	9/16
MTRA - 5	5/16	7.9	5.6	16.3	28.8	27.1	9/16	5/8
MTRA - 6	3/8	9.5	6.9	16.8	31.5	28.8	5/8	11/16
MTRA - 8	1/2	12.7	9.4	22.9	36.0	37.3	13/16	7/8
MTRA - 10	5/8	15.9	11.9	24.4	38.8	41.8	15/16	1
MTRA - 12	3/4	19.1	14.7	24.4	38.8	42.6	1-1/16	1-1/8
MTRA - 14	7/8	22.2	18.3	25.9	39.8	49.4	1-3/16	1-1/4
MTRA - 16	1	25.4	20.3	31.2	49.0	55.6	1-3/8	1-1/2

Part Number	Tube OD	Dimensions					
		d	R	L	L1	h	H
MTRA - 3M	3	1.9	12.9	22.3	20.5	3/8	12
MTRA - 4M	4	2.2	13.7	25.4	23.0	1/2	12
MTRA - 6M	6	4.1	15.3	27.0	25.1	1/2	14
MTRA - 8M	8	5.6	16.2	28.8	27.2	9/16	16
MTRA - 10M	10	7.1	17.2	31.5	29.5	11/16	19
MTRA - 12M	12	8.8	22.8	36.0	37.6	13/16	22
MTRA - 15M	15	11.2	24.4	38.8	41.6	1-1/16	25
MTRA - 16M	16	12.0	24.4	38.8	41.8	1-1/16	25
MTRA - 18M	18	13.9	24.4	39.9	42.6	1-1/16	30
MTRA - 20M	20	15.5	26.0	42.6	67.1	30	32
MTRA - 22M	22	16.1	26.0	42.6	47.2	30	32
MTRA - 25M	25	19.9	31.3	49.1	55.6	1-3/8	38

MCP

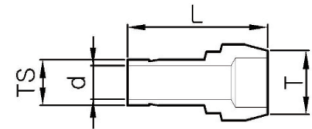
Port Connector



Part Number	Tube OD		Dimensions		Part Number	Tube OD	Dimensions	
	inch	mm	d	L			d	L
MCP- 1	1/16	1.6	0.8	13.7	MCP- 3M	3	1.9	22.2
MCP- 2	1/8	3.2	2.0	22.4	MCP- 6M	6	4.1	25.0
MCP- 4	1/4	6.4	4.3	24.9	MCP- 8M	8	5.6	26.0
MCP- 5	5/16	7.9	5.6	25.9	MCP-10M	10	7.1	27.1
MCP- 6	3/8	9.5	6.9	26.7	MCP-12M	12	8.8	36.2
MCP- 8	1/2	12.7	9.4	36.3	MCP-15M	15	11.2	37.8
MCP-10	5/8	15.9	11.9	37.8	MCP-16M	16	12.0	37.8
MCP-12	3/4	19.1	14.7	37.8	MCP-18M	18	13.9	37.8
MCP-16	1	25.4	20.3	49.3	MCP-20M	20	15.5	39.4
MCP-20	1 1/4	31.8	25.9	69.1	MCP-25M	25	19.9	49.3
MCP-24	1 1/2	38.1	31.8	84.1	MCP-28M	28	22.5	63.5
MCP-32	2	50.8	43.7	115.8	MCP-30M	30	24.3	37.6
					MCP-32M	32	26.5	69.7
					MCP-38M	38	31.6	81.9

MCRP

Reducing Port Connector



Part Number	Tube OD		Dimensions		Part Number	Tube OD	Dimension		
	T	TS	d	L			T	TS	d
MCRP 2- 1	1/8	1/16	0.8	18.3	MCRP 6M- 3M	6	3	1.9	22.9
MCRP 4- 1	1/4	1/16	0.8	19.1	MCRP 8M- 6M	8	6	4.1	25.4
MCRP 4- 2	1/4	1/8	2.0	22.9	MCRP 10M- 6M	10	6	4.1	25.8
MCRP 6- 2	3/8	1/8	2.0	23.4	MCRP 10M- 8M	10	8	5.6	26.3
MCRP 6- 4	3/8	1/4	4.3	25.4	MCRP 12M- 6M	12	6	4.1	29.6
MCRP 8- 2	1/2	1/4	4.3	29.7	MCRP 12M- 8M	12	8	5.6	30.1
MCRP 8- 6	1/2	3/8	6.9	30.7	MCRP 12M- 10M	12	10	7.1	30.6
MCRP12- 8	3/4	1/2	9.4	37.8	MCRP 16M- 12M	16	12	8.8	37.5
MCRP16- 8	1	1/2	9.4	42.9	MCRP28M-25M	28	25	19.8	56.5
MCRP16-12	1	3/4	14.7	43.7	MCRP32M-25M	32	25	19.8	60.3
					MCRP38M-25M	38	25	19.8	65.8

Installation for Port Connectors

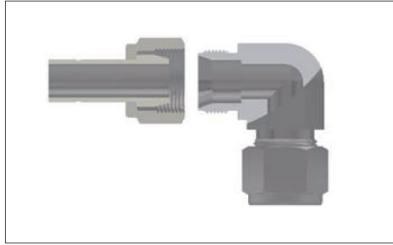
For M-Lok Tube Fitting Up to 1" & 25 mm

Step 1.



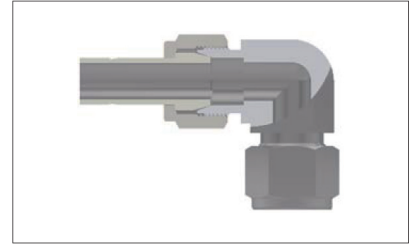
Disassemble the ferrules and nut of the M-Lok tube fitting and remove the ferrules. For sizes over 25mm, the port connector is pre-assembled and supplied.

Step 2.



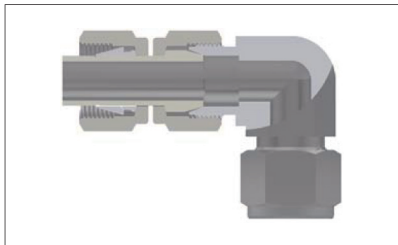
Insert the machined ferrule part of the port connector into the nut. For over 1" & 25mm, the port connector is pre-assembled and supplied.

Step 3.



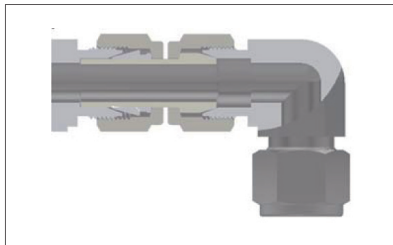
Insert the port connector into the body and hand-tighten the nut. Fix the fitting body and tighten the nut 1/4 turn with a spanner. 1/16", 1/8", 3/16" and 2, 3, 4 mm M-Lok Tube Fitting, 1/8 turn

Step 4.



Insert the nut and ferrule into the tube adapter end of the port connector. Hand-tighten the nut.

Step 5.



Tighten 1 1/4 turns, same as M-Lok tube fittings are assembled.

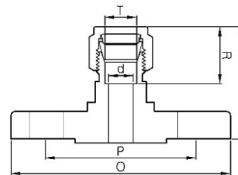
Reassembly

Port connectors can be disassembled and reassembled many times. When reassembling the port connector, hand-tighten the nut and then slowly tighten it with a spanner.

Integral Flange Connectors

MF

Integral Flange Connector



Part Number	ANSI			Tube OD			Dimensions		
	NPS	CLASS	inch	mm	d	R	L	O	P
MF - 8P150 - M4T	1/2	150	1/4	6.35	4.8	15.2	40.9	88.9	60.5
MF - 16P150 - M4T	1	150	1/4	6.35	4.8	15.2	43.7	108.0	79.2
MF - 8P150 - M6T	1/2	150	3/8	9.52	4.8	16.8	42.2	88.9	60.5
MF - 8P300 - M6T	1/2	300	3/8	9.52	7.1	16.8	45.5	95.3	66.5
MF - 16P150 - M6T	1	150	3/8	9.52	7.1	16.8	45.2	108.0	79.2
MF - 8P150 - M8T	1/2	150	1/2	12.7	10.4	22.9	45.2	88.9	60.5
MF - 8P300 - M8T	1/2	300	1/2	12.7	10.4	22.9	48.0	95.3	66.5
MF - 8P1500 - M8T	1/2	1500	1/2	12.7	10.4	22.9	56.2	121.0	82.6
MF - 16P150 - M8T	1	150	1/2	12.7	10.4	22.9	48.3	48.3	79.2
MF - 32P150 - M8T	2	150	1/2	12.7	10.4	22.9	53.1	53.1	42.9
MF - 16P150 - M12T	1	150	3/4	19.05	15.7	24.4	50.3	108.0	79.2
MF - 16P900 - M12T	1	900	3/4	19.05	15.7	24.4	56.2	149.0	101.6
MF - 16P150 - M16T	1	150	1	25.4	22.4	31.2	60.5	108.0	79.2
MF - 32P150 - M24T	2	150	1-1/2	38.1	34.0	50.0	86.4	152.4	120.7
MF - 32P150 - M32T	2	150	2	50.8	46.0	67.6	104.4	152.4	120.7