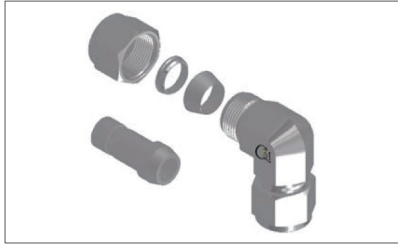


# Installation for Port Connectors

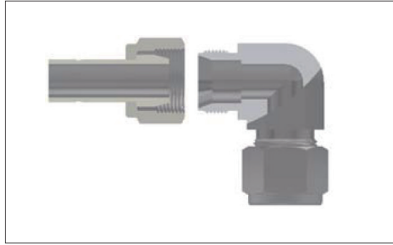
For M-Lok Tube Fitting Up to 1" & 25 mm

## Step 1.



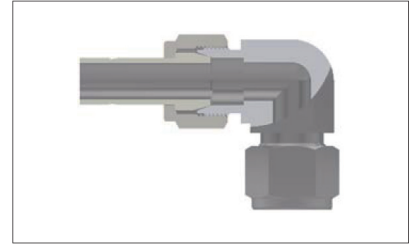
Disassemble the ferrules and nut of the M-Lok tube fitting and remove the ferrules. For sizes over 25mm, the port connector is pre-assembled and supplied.

## Step 2.



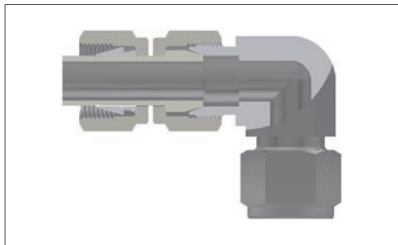
Insert the machined ferrule part of the port connector into the nut. For over 1" & 25mm, the port connector is pre-assembled and supplied.

## Step 3.



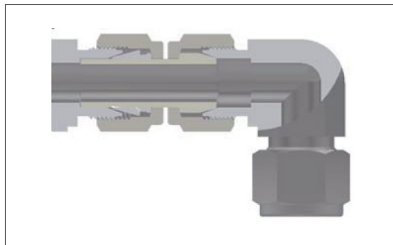
Insert the port connector into the body and hand-tighten the nut. Fix the fitting body and tighten the nut 1/4 turn with a spanner. 1/16", 1/8", 3/16" and 2, 3, 4 mm M-Lok Tube Fitting, 1/8 turn

## Step 4.



Insert the nut and ferrule into the tube adapter end of the port connector. Hand-tighten the nut.

## Step 5.



Tighten 1 1/4 turns, same as M-Lok tube fittings are assembled.

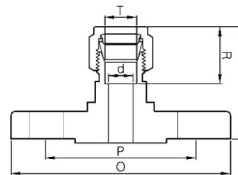
## Reassembly

Port connectors can be disassembled and reassembled many times. When reassembling the port connector, hand-tighten the nut and then slowly tighten it with a spanner.

# Integral Flange Connectors

## MF

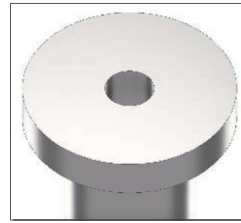
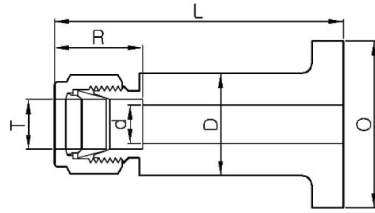
### Integral Flange Connector



Part Number	ANSI			Tube OD			Dimensions		
	NPS	CLASS	inch	mm	d	R	L	O	P
MF - 8P150 - M4T	1/2	150	1/4	6.35	4.8	15.2	40.9	88.9	60.5
MF - 16P150 - M4T	1	150	1/4	6.35	4.8	15.2	43.7	108.0	79.2
MF - 8P150 - M6T	1/2	150	3/8	9.52	4.8	16.8	42.2	88.9	60.5
MF - 8P300 - M6T	1/2	300	3/8	9.52	7.1	16.8	45.5	95.3	66.5
MF - 16P150 - M6T	1	150	3/8	9.52	7.1	16.8	45.2	108.0	79.2
MF - 8P150 - M8T	1/2	150	1/2	12.7	10.4	22.9	45.2	88.9	60.5
MF - 8P300 - M8T	1/2	300	1/2	12.7	10.4	22.9	48.0	95.3	66.5
MF - 8P1500 - M8T	1/2	1500	1/2	12.7	10.4	22.9	56.2	121.0	82.6
MF - 16P150 - M8T	1	150	1/2	12.7	10.4	22.9	48.3	48.3	79.2
MF - 32P150 - M8T	2	150	1/2	12.7	10.4	22.9	53.1	53.1	42.9
MF - 16P150 - M12T	1	150	3/4	19.05	15.7	24.4	50.3	108.0	79.2
MF - 16P900 - M12T	1	900	3/4	19.05	15.7	24.4	56.2	149.0	101.6
MF - 16P150 - M16T	1	150	1	25.4	22.4	31.2	60.5	108.0	79.2
MF - 32P150 - M24T	2	150	1-1/2	38.1	34.0	50.0	86.4	152.4	120.7
MF - 32P150 - M32T	2	150	2	50.8	46.0	67.6	104.4	152.4	120.7

# MLJ

## Flanged Lapped Joint Connector



Part Number	Tube OD		Dimensions					Surface Finish
	inch	mm	d	R	L	O	D	
MLJ-M4T-SM	1/4	6.35	4.8	15.2	80.8	35.0	22.2	Smooth Face
MLJ-M6T-SM	3/8	9.52	7.1	16.8	82.3	35.0	22.2	Smooth Face
MLJ-M8T-SM	1/2	12.7	10.4	22.9	84.8	35.0	22.2	Smooth Face
MLJ-M4T-SE	1/4	6.35	4.8	15.2	80.8	35.0	22.2	Serrated Face
MLJ-M6T-SE	3/8	9.52	7.1	16.8	82.3	35.0	22.2	Serrated Face
MLJ-M8T-SE	1/2	12.7	10.4	22.9	84.8	35.0	22.2	Serrated Face

Smooth Face

Ra 3.2 to 6.3µm

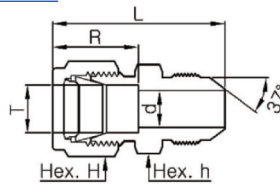
Serrated Face

Ra 6.3 to 12.5µm

# AN Adapter

## MUA

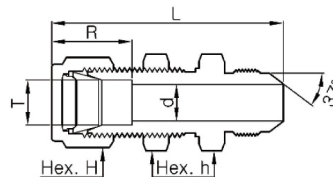
### AN Union



Part Number	Tube OD		AN Tube		Thread T	Dimensions				
	inch	mm	inch	mm		d	R	L	h	H
MUA 1 - 2	1/16	1.6	1/8	3.2	5/16 - 24UNF	1.3	8.6	27.2	7/16	5/16
MUA 2 - 2	1/8	3.2	1/8	3.2	5/16 - 24UNF	1.5	12.7	6.9	7/16	7/16
MUA 2 - 4	1/8	3.2	1/4	6.4	7/16 - 20UNF	2.3	12.7	35.1	1/2	7/16
MUA 4 - 4	1/4	6.4	1/4	6.4	7/16 - 20UNF	4.3	15.2	37.6	1/2	9/16
MUA 5 - 5	5/16	7.9	5/16	7.9	1/2 - 20UNF	5.8	16.3	38.4	9/16	5/8
MUA 6 - 4	3/8	9.5	1/4	6.4	7/16 - 20UNF	4.3	16.8	39.6	5/8	11/16
MUA 6 - 6	3/8	9.5	3/8	9.5	9/16 - 18UNF	7.1	16.8	39.6	5/8	11/16
MUA 8 - 8	1/2	12.7	1/2	12.7	3/4 - 16UNF	9.9	22.9	46.0	13/16	7/8
MUA 12 - 12	3/4	19.1	3/4	19.1	1 1/16 - 12UN	15.5	24.4	53.3	1-1/8	1-1/8
MUA 16 - 16	1	25.4	1	25.4	1 5/16 - 12UN	21.3	31.2	61.5	1-3/8	1-1/2

# MBUA

### AN Bulkhead Union



Part Number	Tube OD		AN Tube		Thread T	Dimensions					Panel	
	inch	mm	inch	mm		d	R	L	h	H	Hole	Thick.
MBUA 4 - 4	1/4	6.4	1/4	6.4	7/16 - 20UNF	4.3	15.2	53.8	5/8	9/16	11.5	10.2
MBUA 6 - 6	3/8	9.5	3/8	9.5	9/16 - 18UNF	7.1	16.8	57.2	3/4	11/16	14.7	11.2
MBUA 8 - 8	1/2	12.7	1/2	12.7	3/4 - 16UNF	9.9	22.9	65.8	15/16	7/8	19.4	12.7
MBUA 12 - 12	3/4	19.1	3/4	19.1	1 1/16 - 12UN	15.5	24.4	79.0	13/16	1-1/8	25.8	16.8
MBUA 16 - 16	1	25.4	1	25.4	1 5/16 - 12UN	21.3	31.2	92.5	15/8	1-1/2	33.7	19.1