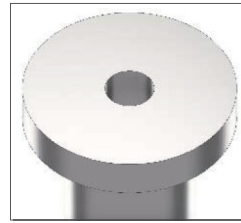
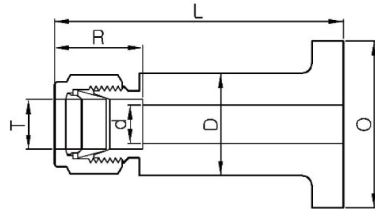


MLJ

Flanged Lapped Joint Connector



Part Number	Tube OD		Dimensions					Surface Finish
	inch	mm	d	R	L	O	D	
MLJ-M4T-SM	1/4	6.35	4.8	15.2	80.8	35.0	22.2	Smooth Face
MLJ-M6T-SM	3/8	9.52	7.1	16.8	82.3	35.0	22.2	Smooth Face
MLJ-M8T-SM	1/2	12.7	10.4	22.9	84.8	35.0	22.2	Smooth Face
MLJ-M4T-SE	1/4	6.35	4.8	15.2	80.8	35.0	22.2	Serrated Face
MLJ-M6T-SE	3/8	9.52	7.1	16.8	82.3	35.0	22.2	Serrated Face
MLJ-M8T-SE	1/2	12.7	10.4	22.9	84.8	35.0	22.2	Serrated Face

Smooth Face

Ra 3.2 to 6.3µm

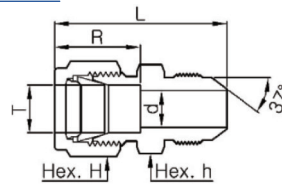
Serrated Face

Ra 6.3 to 12.5µm

AN Adapter

MUA

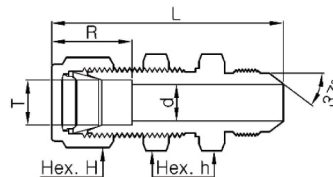
AN Union



Part Number	Tube OD		AN Tube		Thread T	Dimensions				
	inch	mm	inch	mm		d	R	L	h	H
MUA 1 - 2	1/16	1.6	1/8	3.2	5/16 - 24UNF	1.3	8.6	27.2	7/16	5/16
MUA 2 - 2	1/8	3.2	1/8	3.2	5/16 - 24UNF	1.5	12.7	6.9	7/16	7/16
MUA 2 - 4	1/8	3.2	1/4	6.4	7/16 - 20UNF	2.3	12.7	35.1	1/2	7/16
MUA 4 - 4	1/4	6.4	1/4	6.4	7/16 - 20UNF	4.3	15.2	37.6	1/2	9/16
MUA 5 - 5	5/16	7.9	5/16	7.9	1/2 - 20UNF	5.8	16.3	38.4	9/16	5/8
MUA 6 - 4	3/8	9.5	1/4	6.4	7/16 - 20UNF	4.3	16.8	39.6	5/8	11/16
MUA 6 - 6	3/8	9.5	3/8	9.5	9/16 - 18UNF	7.1	16.8	39.6	5/8	11/16
MUA 8 - 8	1/2	12.7	1/2	12.7	3/4 - 16UNF	9.9	22.9	46.0	13/16	7/8
MUA 12 - 12	3/4	19.1	3/4	19.1	1 1/16 - 12UN	15.5	24.4	53.3	1-1/8	1-1/8
MUA 16 - 16	1	25.4	1	25.4	1 5/16 - 12UN	21.3	31.2	61.5	1-3/8	1-1/2

MBUA

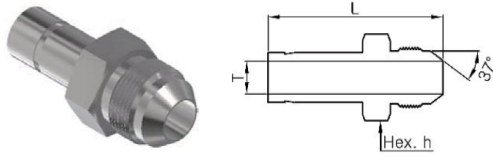
AN Bulkhead Union



Part Number	Tube OD		AN Tube		Thread T	Dimensions					Panel	
	inch	mm	inch	mm		d	R	L	h	H	Hole	Thick.
MBUA 4 - 4	1/4	6.4	1/4	6.4	7/16 - 20UNF	4.3	15.2	53.8	5/8	9/16	11.5	10.2
MBUA 6 - 6	3/8	9.5	3/8	9.5	9/16 - 18UNF	7.1	16.8	57.2	3/4	11/16	14.7	11.2
MBUA 8 - 8	1/2	12.7	1/2	12.7	3/4 - 16UNF	9.9	22.9	65.8	15/16	7/8	19.4	12.7
MBUA 12 - 12	3/4	19.1	3/4	19.1	1 1/16 - 12UN	15.5	24.4	79.0	13/16	1-1/8	25.8	16.8
MBUA 16 - 16	1	25.4	1	25.4	1 5/16 - 12UN	21.3	31.2	92.5	15/8	1-1/2	33.7	19.1

MMAA

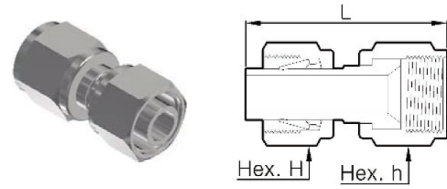
AN Male Adapter



Part Number	Tube OD		AN Tube		Thread T	Dimensions		
	inch	mm	inch	mm		d	L	h
MMAA 4- 4	1/4	6.4	1/4	6.4	7/16-20UNF	4.3	37.1	1/2
MMAA 6- 4	3/8	9.5	1/4	6.4	7/16-20UNF	4.3	38.9	1/2
MMAA 6- 6	3/8	9.5	3/8	9.5	9/16-18UNF	6.9	39.6	5/8
MMAA 8- 8	1/2	12.7	1/2	12.7	3/4-16UNF	9.4	48.5	13/16
MMAA12-12	3/4	19.1	3/4	19.1	1 1/16-12UN	14.7	56.1	1-1/8
MMAA16-16	1	25.4	1	25.4	1 5/16-12UN	20.3	65.5	1-3/8

MAA

1AN Female Adapter

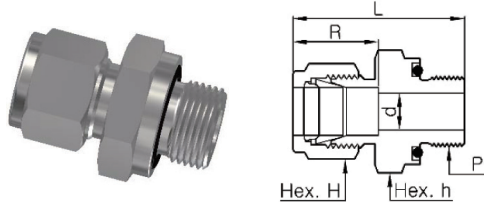


Part Number	Tube OD		AN Tube		Thread T	Dimensions		
	inch	mm	inch	mm		L	h	H
MAA2- 2	1/8	3.2	1/8	3.2	5/16-24UNF	18.5	3/8	7/16
MAA2- 4	1/8	3.2	1/4	6.4	7/16-20UNF	19.1	9/16	7/16
MAA4- 4	1/4	6.4	1/4	6.4	7/16-20UNF	21.3	9/16	9/16
MAA6- 6	3/8	9.5	3/8	9.5	9/16-18UNF	24.9	11/16	11/16
MAA8- 8	1/2	12.7	1/2	12.7	3/4-16UNF	33.0	7/8	7/8

O-Seal and Positionable Thread Connectors

MMC-UO

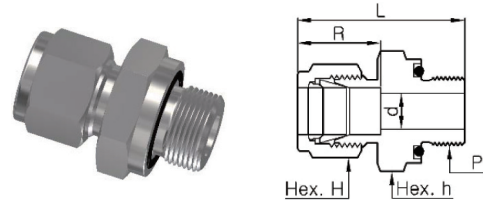
Female Adapter, PT Thread



Part Number	Tube OD	Thread S	Dimensions					O-Ring
			d	R	L	h	H	
MMC 2- 2UO	1/8	5/16-24	2.3	12.7	32.8	9/16	7/16	011
MMC 3- 3UO	3/16	3/8-24	3.0	12.7	34.3	5/8	1/2	012
MMC 4- 4UO	1/4	7/16-20	4.8	15.2	38.4	3/4	9/16	111
MMC 5- 5UO	5/16	1/2-20	6.4	16.3	40.6	7/8	5/8	112
MMC 6- 6UO	3/8	9/16-18	7.1	16.8	42.4	15/16	11/16	113
MMC 8- 8UO	1/2	3/4-16	10.4	22.9	46.0	1 1/8	7/8	116
MMC12-12UO	3/4	1 1/16-12	15.7	24.4	52.3	1 1/2	1-1/8	215
MMC16-16UO	1	1 5/16-12	22.4	31.2	58.2	1 3/4	1-1/2	219

MMC-NO

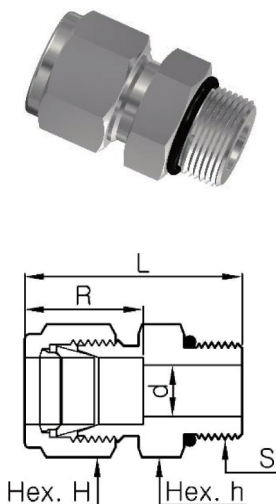
O-Seal Pipe Thread Connector



Part Number	Tube OD	NPT P	Dimensions					O-Ring
			d	R	L	h	H	
MMC 2-2NO	1/8	1/8	3.2	12.7	32.8	3/4	7/16	111
MMC 4-2NO	1/4	1/8	6.4	15.2	35.1	3/4	9/16	111
MMC 4-4NO	1/4	1/4	6.4	15.2	38.4	15/16	9/16	113
MMC 6-4NO	3/8	1/4	9.5	16.8	39.9	15/16	11/16	113
MMC 6-6NO	3/8	3/8	9.5	16.8	41.4	1 1/8	11/16	116
MMC 6-8NO	3/8	1/2	9.5	16.8	47.0	1 5/16	11/16	212
MMC 8-8NO	1/2	1/2	12.7	22.9	49.8	1 5/16	7/8	212

MMCS-U

SAE Male Connector



Part Number	Tube OD	Thread S	Dimensions					O-Ring No.
			d	R	L	h	H	
MMCS 2- 2U	1/8	5/16-24UNF	2.3	12.7	30.0	7/16	7/16	902
MMCS 2- 4U	1/8	7/16-20UNF	2.3	12.7	31.5	9/16	7/16	904
MMCS 4- 4U	1/4	7/16-20UNF	4.8	15.2	34.0	9/16	9/16	904
MMCS 4- 6U	1/4	9/16-18UNF	4.8	15.2	35.6	11/16	9/16	906
MMCS 4- 8U	1/4	3/4-16UNF	4.8	15.2	37.6	7/8	9/16	908
MMCS 4-10U	1/4	7/8-14UNF	4.8	15.2	40.6	1	9/16	910
MMCS 5- 5U	5/16	1/2-20UNF	6.4	16.3	34.8	5/8	5/8	905
MMCS 6- 4U	3/8	7/16-20UNF	4.6	16.8	35.6	5/8	11/16	904
MMCS 6- 6U	3/8	9/16-18UNF	7.1	16.8	37.1	11/16	11/16	906
MMCS 6- 8U	3/8	3/4-16UNF	7.1	16.8	39.1	7/8	11/16	908
MMCS 6-10U	3/8	7/8-14UNF	7.1	16.8	42.2	1	11/16	910
MMCS 8- 6U	1/2	9/16-18UNF	7.1	22.9	39.1	13/16	7/8	906
MMCS 8- 8U	1/2	3/4-16UNF	10.4	22.9	41.9	7/8	7/8	908
MMCS 8-10U	1/2	7/8-14UNF	10.4	22.9	45.0	1	7/8	910
MMCS 8-12U	1/2	1 1/16-12UN	10.4	22.9	49.0	1-1/4	7/8	912
MMCS 10- 8U	5/8	3/4-16UNF	10.7	24.4	41.9	15/16	1	908
MMCS 10-10U	5/8	7/8-14UNF	12.7	24.4	45.2	1	1	910
MMCS 12- 8U	3/4	3/4-16UNF	10.7	24.4	46.0	1-1/16	1-1/8	908
MMCS 12-12U	3/4	1 1/16-12UN	15.7	24.4	49.0	1-1/4	1-1/8	912
MMCS 14-14U	7/8	1 3/16-12UN	18.3	25.9	49.0	1-3/8	1-1/4	914
MMCS 16-12U	1	1 1/16-12UN	16.8	31.2	53.3	1-3/8	1-1/2	912
MMCS 16-16U	1	1 5/16-12UN	22.4	31.2	54.4	1-1/2	1-1/2	916
MMCS 20-20U	1-1/4	1 5/8-12UN	27.7	41.1	68.3	1-7/8	1-7/8	920
MMCS 24-24U	1-1/2	1 7/8-12UN	34.0	50.0	77.7	2-1/8	2-1/4	924
MMCS 32-32U	2	2 1/2-12UN	46.0	67.6	101.6	2-3/4	3	932